



# **GENERIC**

## **Worx 125**



DESIGN  AUSTRIA

# **Reservedele**

Holtvej 8-10, Høruphav, 6470 Sydals

Telefon: +45 73 15 11 00

Fax: +45 73 15 11 01

E-mail: [info@scanmi.dk](mailto:info@scanmi.dk) · [www.scanmi.dk](http://www.scanmi.dk)

CVR: 27 73 31 07

Maj 2013

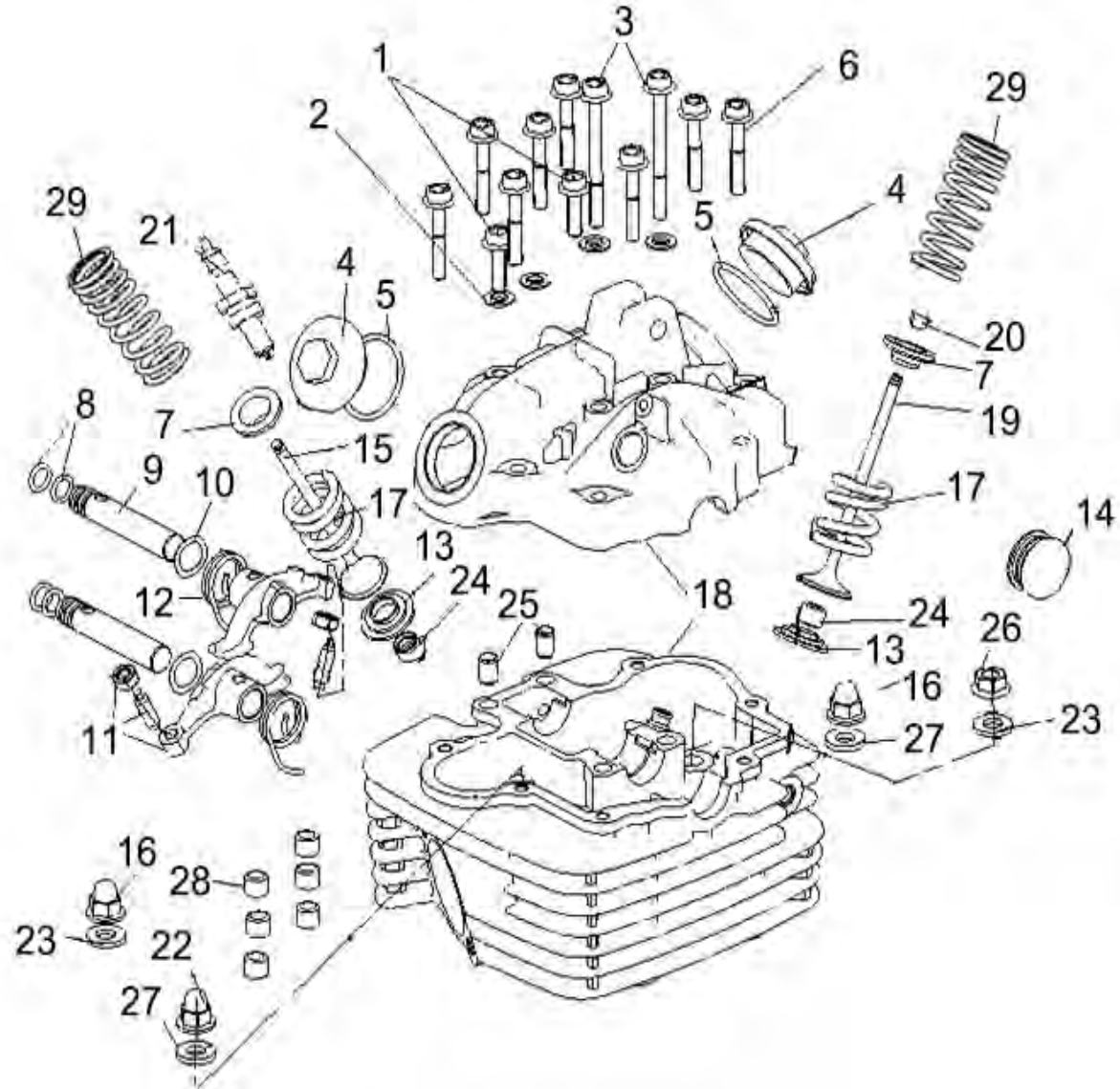


**SCANMI**  
SCANDINAVIAN MACHINERY IMPORT ApS

# JCK (Q48-01) - Q C2321007HT00

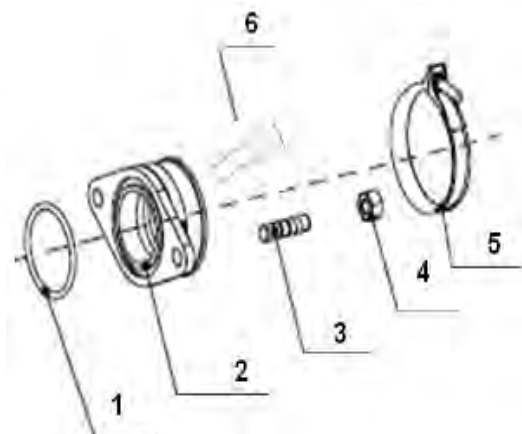
## E01气缸盖/盖罩分总成 COVER CYLINDER HEAD ASSY

NO.	PART NO.	EN DESCRIPTION	QTY	NOTE
1	120143090000	WASHER M6×21	2	
2	120133090002	WASHER	4	
3	10005309001X	WASHER M6×60	2	
4	12001214002X	VAVLE HEAD	2	
5	100033090000	O RING 30.5×3.3	2	
6	10006309001X	BOLT M6X35	8	
7	120013090002	GASKET,UP SPRING	2	
8	B190100860A0	O RING 8.6×1.9	4	
9	12916309002X	AXLE, VALVE ROCKER ARM	2	
10	120033090000	WASHER,SPRING	2	
11	12913309002X	ADJUSTING	2	
12	120163090000	ROCKER SPRING	2	
13	129213090005	GASKET,OUTER SPRING	2	
14	100043090000	CYLINDER COVER JAMMING	1	
15	129193090002	VALVE,EXHAUST	1	
16	120083090000	CAP NUT M8	2	
17	129264180000	SPRING,OUTER	2	
18	100343090090	COVER&CYLINDER HEAD ASSY,GRAY	1	
19	129183090002	VALVE,INTAKE	1	
20	129223230000	COTTER,VALVE	4	
21	299073090002	SPARK PLUG	1	
22	120083090000	CAP NUT M8	1	
23	120093090000	WASHER 8	2	
24	120013050000	OIL SEAL	2	
25	120103090000	WASHER	2	
26	12012309002X	BOLT	1	
27	120113090000	WASHER 8	2	
28	120063090000	SHOCK ABSORBER CHOCK	6	
29	129254180000	SPRING,INNER	2	



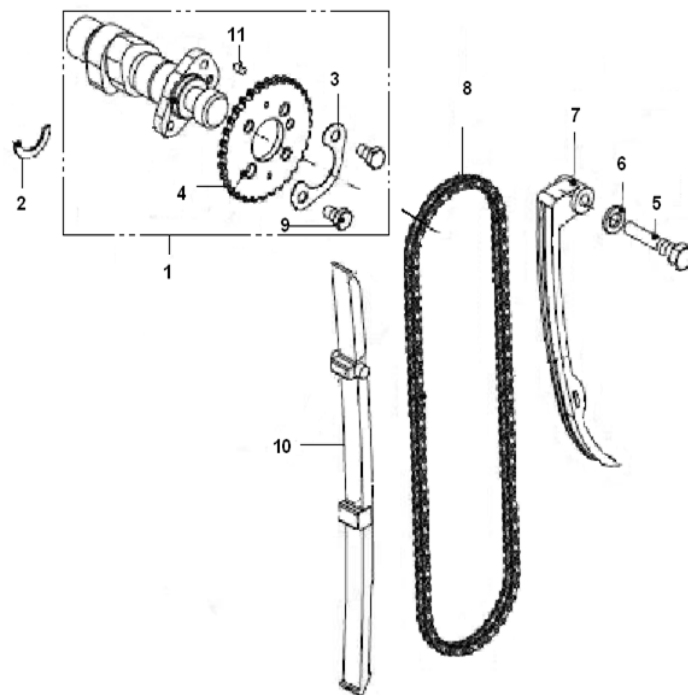
### E02进气管组件分总成 I

NO.	PART NO.	EN DESCRIPTION	QTY	NOTES
1	100023090000	O RING 31.5×2.4	1	
2	110013090001	PIPE ASSY(力)INTAKE	1	
3	10007309001X	STUD BOLT M6X22	1	
4	B04050600064	NUT M6	1	
5	110043090003	CLAMP ASSY	1	
6	100053210000	SCREW,DECOLLATION M6×16	1	



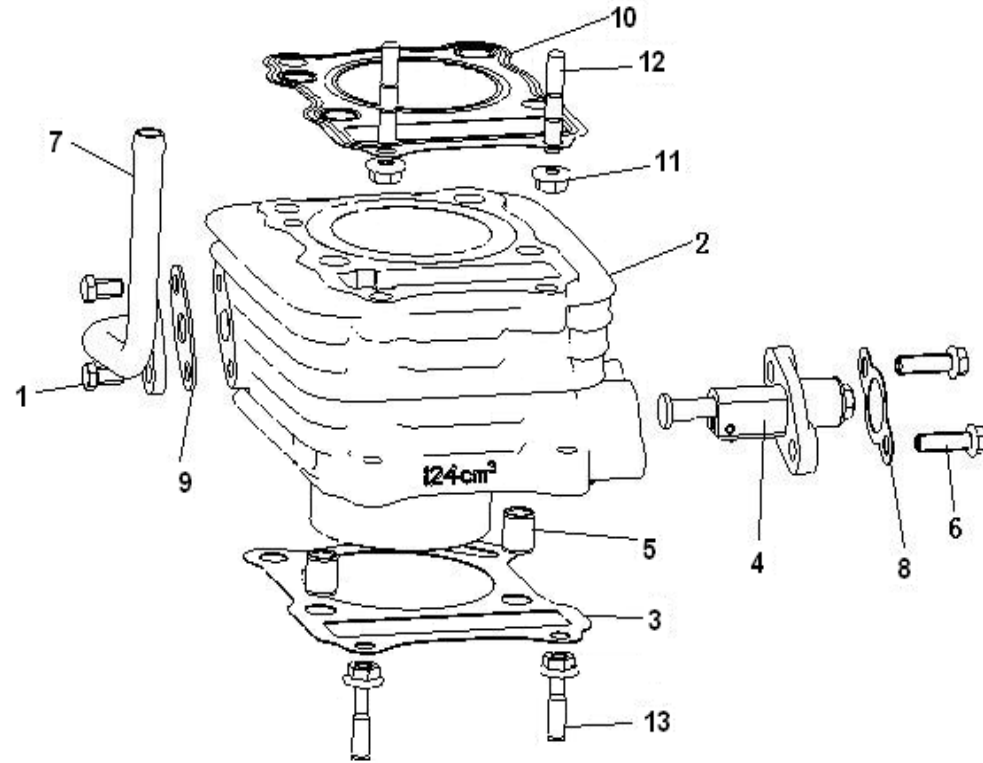
### E03配气机构 INTAKE&

NO.	PART NO.	EN DESCRIPTION	QTY	NOTES
1	129074180000	CAMSHAFT ASSY	1	
2	120043090000	WASHER	1	
3	120343090000	WASHER	1	
4	120353090000	CHAIN WHEEL	1	
5	140023090000	BOLT	1	
6	140033090000	WASHER	1	
7	140013090002	COMPONENTS OF THE RIGHT CHAIN GUIDE PLATE	1	
8	129023090002	TIMING CHAIN	1	
9	120203090000	GASKET	2	
10	140063090002	CHAIN LEFT GUIDE PLATE	1	
11	B090105008B0	PIN	1	



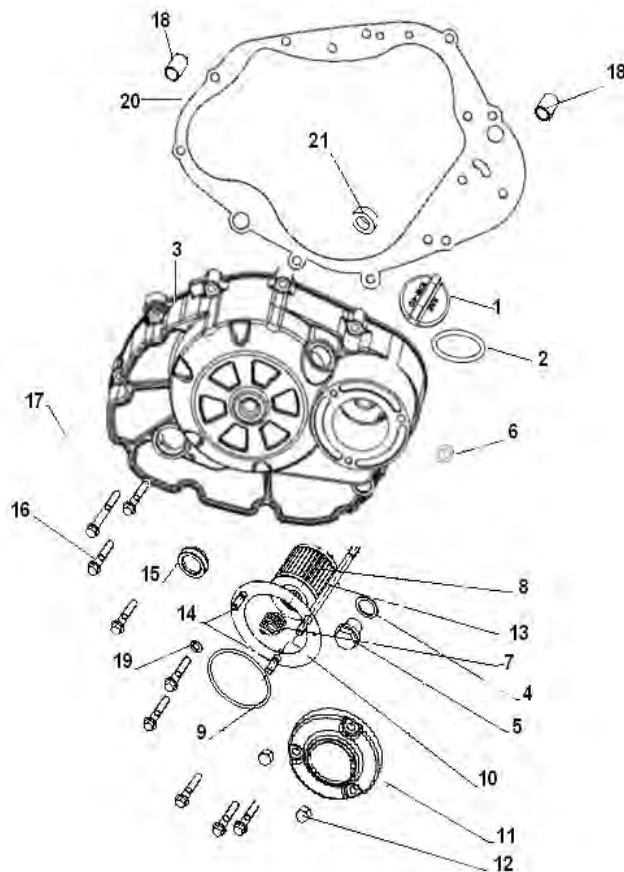
E04气缸体分总成 CYLI

NO.	PART NO.	EN DESCRIPTION	QTY	NOTES
1	B01070601864	BOLT M6×18	2	
2	139013210030	CYLINDER GRAY	1	
3	139023090022	GASKET,CYLINDER	1	
4	130123090090	TENSIONER ASSY GRAY	1	
5	130023090000	PIN,DOWEL	2	
6	13001309001X	BOLT M6X20	2	
7	119083090010	SYPHON ASSM	1	
8	130113090012	SEAL SPACER	1	
9	119092140010	GASKET	1	
10	109073090000	CYLINDER HEAD GASKET	1	
11	B04070600054	HEXAGON NUTS WITH FLANGE M6	4	
12	12007309001X	STUD BOLT	4	
13	13001309001X	BOLT M6X20	2	



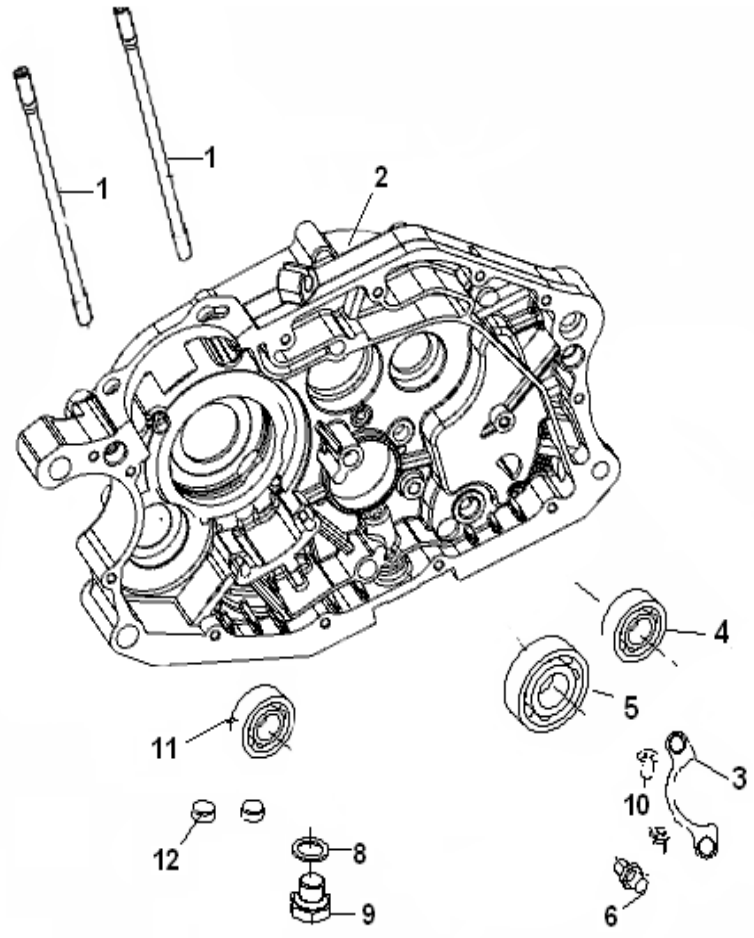
**E05右盖分总成 CLUTC**

NO.	PART NO.	EN DESCRIPTION	QTY	NOTES
1	160063090000	OIL FILLER THREAD PLUG	1	
2	B190101700C0	O RING17×3.55	1	
3	169103090190	COVER,CLUTCH GRAY	1	
4	160103090000	THREAD PLUG FILLING PIECE Φ14	1	
5	160093090000	THE SPIRAL STOPS UP M14	1	
6	B190101250A0	O RING12.5×1.8	1	
7	160033090000	SPRING	1	
8	160043090000	PAPER FILTER ELEMENT MODULE	1	
9	B190105260B0	O RING52.6×2.4	1	
10	160123090010	MACHINE FILTERS COVERS THE FILLING PIECE	1	
11	160413090010	MACHINE FILTERS THE LID GRAY	1	
12	B04220600034	COVERS THE NUT M6	3	
13	16005309001X	DOUBLE SCREW BOLT	1	
14	B03000601262	DOUBLE SCREW BOLT M6×12	2	
15	160083090000	OIL INDICATOR ASSY	1	
16	B01070603064	BOLT M6×30	9	
17	B01070604564	BOLT M6×45	1	
18	150043090000	PIN,DOWEL	2	
19	150013070000	WASHER 6	2	
20	169113090010	GASKET,COVER LH	1	
21	160023090000	OIL SEAL	1	



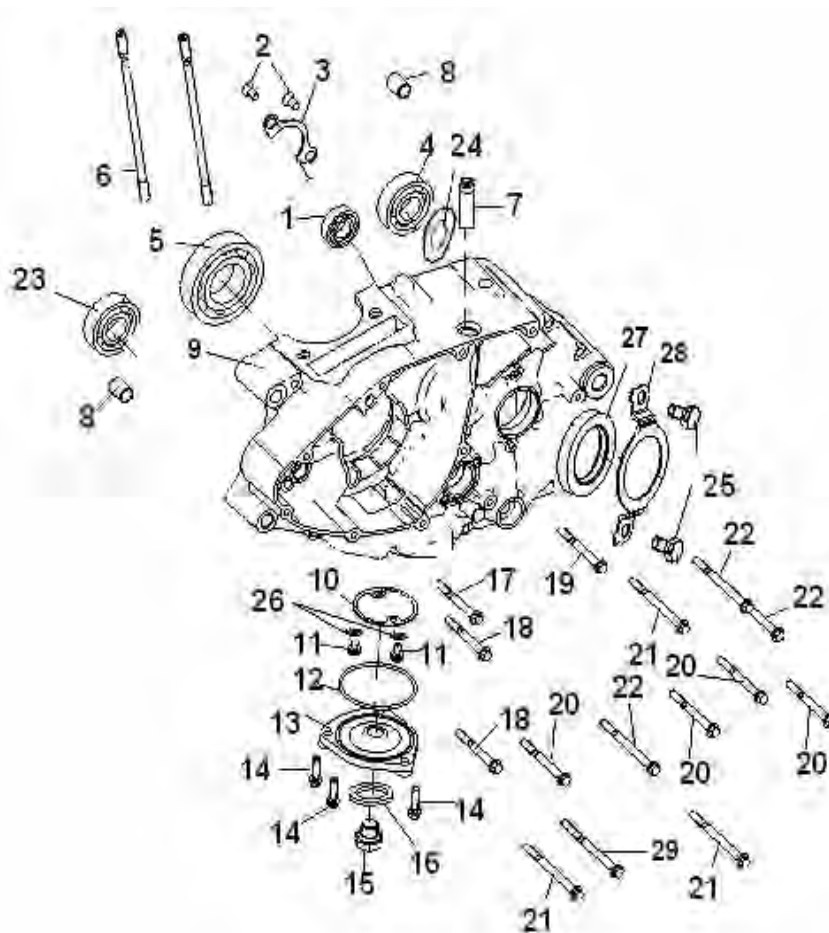
**E06右曲轴箱分总成 RIC**

NO.	PART NO.	EN DESCRIPTION	QTY	NOTE
1	15911309002X	STIDBOLT,CYLINDER 8×173	2	
2	159033210090	CRANKCASE,RIGHT GRAY	1	
3	150113090000	GEAR	1	
4	B12016020204	BERING6202/P6	1	
5	B12016020403	BEARING6204/P6	1	
6	150123090000	SET BOLT	1	
8	150093090000	GASKET SEAL	1	
9	15008309001X	THE SPIRAL STOPS UP	1	
10	B02010601263	SCREW M6X12	2	
11	B12016020301	BERING 6203	1	
12	150035140000	PIN,DOWEL	2	



E07左曲轴箱分总成 LE

NO.	PART NO.	EN DESCRIPTION	QTY	NOTES
1	B12016000203	BERING 6002-RS/P6	1	
2	B02010601263	TEN CHARACTER TROUGHS SINK A BOLT M6×12	2	
3	150113090000	GEAR	1	
4	B12016020403	BEARING6204/P6	1	
5	150304230000	BERING 6207/P53 Z2	1	
6	15910309002X	AIR CYLINDER STUD	2	
7	150153090000	HOSE,BREATHER	1	
8	150043090000	PIN,DOWEL	2	
9	159023210090	LEFT CRANKCASE ASSY GRAY	1	
10	150103090000	OIL SET	1	
11	B01030501263	HEXAGONAL HEAD TAP BOLT	1	
12	B190106050B0	O RING 60.5×2.4	1	
13	150023090090	MESH LID GRAY	1	
14	B01070602064	BOLT M6×20	3	
15	15008309001X	THE SPIRAL STOPS UP	1	
16	150093090000	GASKET SEAL	1	
17	B01070605564	BOLT M6×55	1	
18	B01070606563	BOLT M6×65	2	
19	B01070606063	BOLT M6×60	1	
20	B01070606064	BOLT M6×60	4	
21	B01070607563	BOLT M6×75	3	
22	B01070607564	BOLT M6×75	3	
23	B12016020301	BEARING 6203	1	
24	210083090000	WASHER 20	1	
25	B01030601062	BOLT M6×10	2	
26	100084050000	WASHER 5	2	
27	210073090000	OIL SEAL 27X40X6	1	
28	210093090000	SEAL PACKING COVER	1	
29	10001305001X	BOLT M6×95	1	



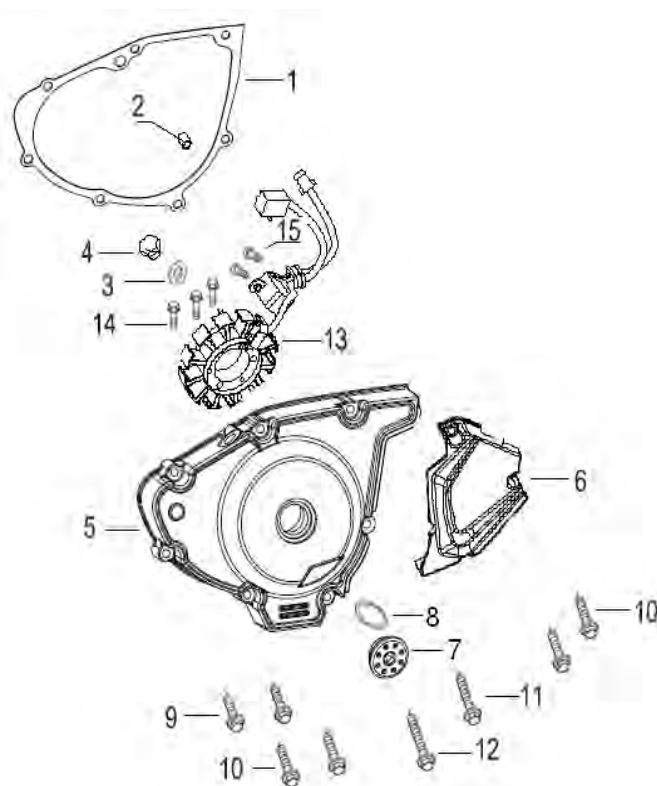
### E08曲轴箱左盖分总成

序号 零件号码



使用数量 备注

NO.	PART NO.	EN DESCRIPTION	QTY	NOTES
1	169073210000	GASKET,COVER MAGNETO	1	
2	150112070000	PIN,DOWEL	2	
3	160253090000	O RING13.8X2.5	1	
4	160203090002	PLUG	1	
5	169063090090	COVER,MAGNETO GRAY	1	
6	169053090140	COVER,SPROCKET GRAY	1	
7	160383090000	SEAL COVER	1	
8	B190102240C0	O RING22.4×3.55	1	
9	B01070603064	BOLT M6×30	4	
10	B01070603564	BOLT M6×35	3	
11	B01070604064	BOLT M6×40	2	
12	B01070605564	BOLT M6×55	1	
13	299033090000	STATOR ASSY. COMP.	1	
14	B01030502863	BOLT M5×28	2	
15	B02040401223	SCREW M4×12	2	





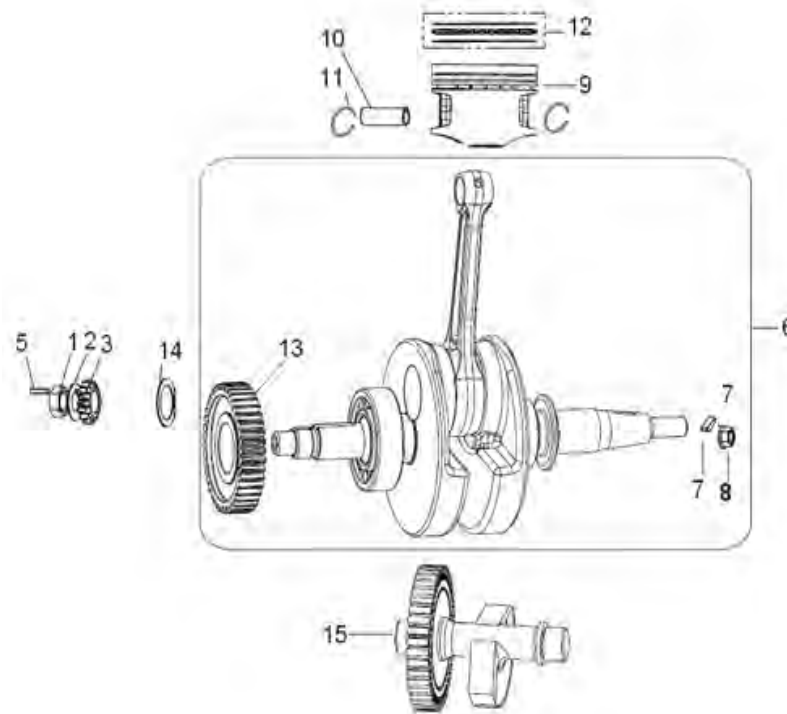
### E09活塞曲轴连杆分总成

序号 零件号码



使用数量 备注

NO.	PART NO.	EN DESCRIPTION	QTY	NOTES
1	170013090000	NUT M16X1.5	1	
2	170023090000	WASHER	1	
3	269063090000	OIL PUMP [5] GEAR DRIVE	1	
5	170041170000	KEY 4x20	1	
6	179013210002	CRANKSHAFT&CONNECTING ROD ASSY	1	
7	B11810305013	KEY	1	
8	17006309001X	NUT	1	
9	179133090003	PISTON	1	
10	179143090002	PIN,PISTON	1	
11	179153090000	CIRCLIPΦ14	2	
12	17009309002Z	RING ASSY	1	
13	179303210000	GEAR DRIVE	1	
14	150033090000	WASHER	1	
15	179243210005	BALANCE SHAFT ASSY	1	



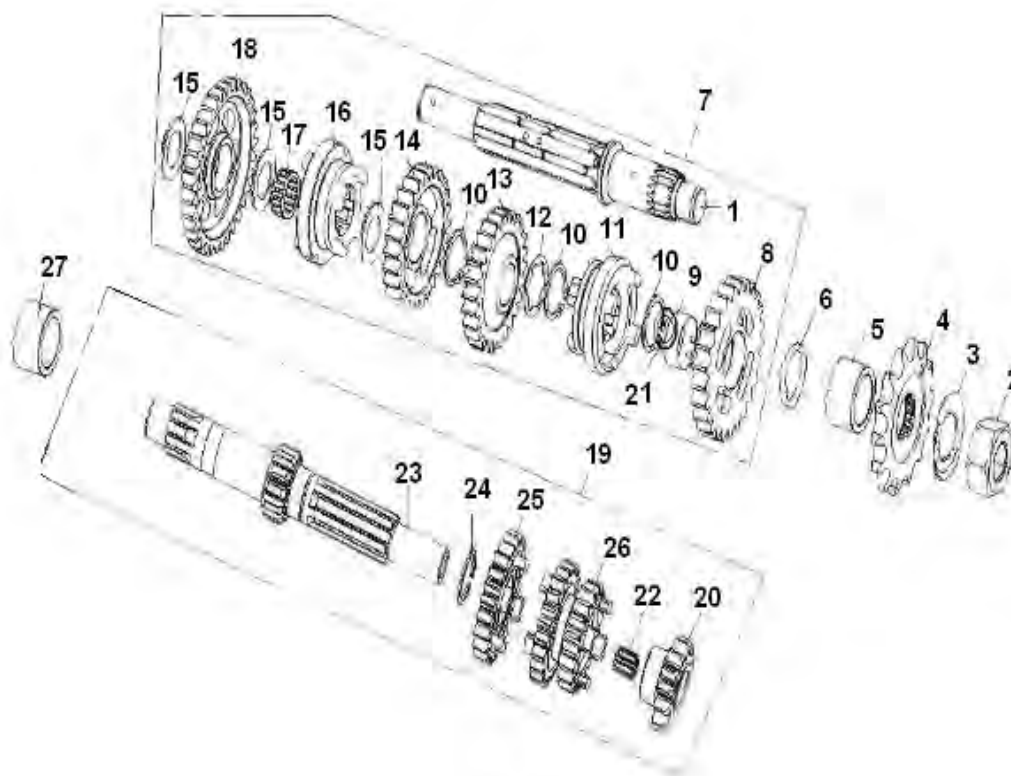
### E10主、副轴分总成 CO

序号 零件号码



使用数量 备注

NO.	PART NO.	EN DESCRIPTION	QTY	NOTES
1	219223090001	SHAFT,DRIVE	1	
2	210063090000	WASHER,LOCK M16X1.5	1	
3	219313090000	GASKET, COVER MAGNETO	1	
4	219303090000	SPROCKET,ENGINE 13TEETH	1	
5	210053090000	SPACER	1	
6	B190101900B1	O RING 19×2.65	1	
7	21922309001Z	DRIVEN SHAFT ASSY	1	
8	219243090000	GEAR,2ND DRIVEN	1	
9	210473090000	SPACER 23×20×7	1	
10	B080100020A0	CIRCLIP	3	
11	210113090000	CHANGES THE FILES WHEEL	1	
12	210123090000	WASHER,SPLINE 20	1	
13	219253090000	GEAR, 3 RD DRIVEN	1	
14	219263090000	GEAR, 4 TH DRIVEN	1	
15	210133090000	WASHER	4	
16	219273090000	WASHER	4	
17	210463090000	BERING	1	
18	219233090000	GEAR, 1ST DRIVEN	1	
19	219133210000	DRIVE SHAFT ASSY	1	
20	219163090000	DRIVING TWO SPEED GEAR	1	
21	240062140000	WASHERS $\phi$ 20.2	1	
22	210043090000	STOPS UP THE COLUMN	1	
23	219143210000	SHAFT,COUNTER	1	
24	B080100020A0	CIRCLIP	1	
25	219193090000	DRIVING FIFTH GEAR GEAR	1	
26	210033090000	INITIATIVE THREE, FOURTH SPEED GEAR	1	
27	210013210000	SPACER	1	



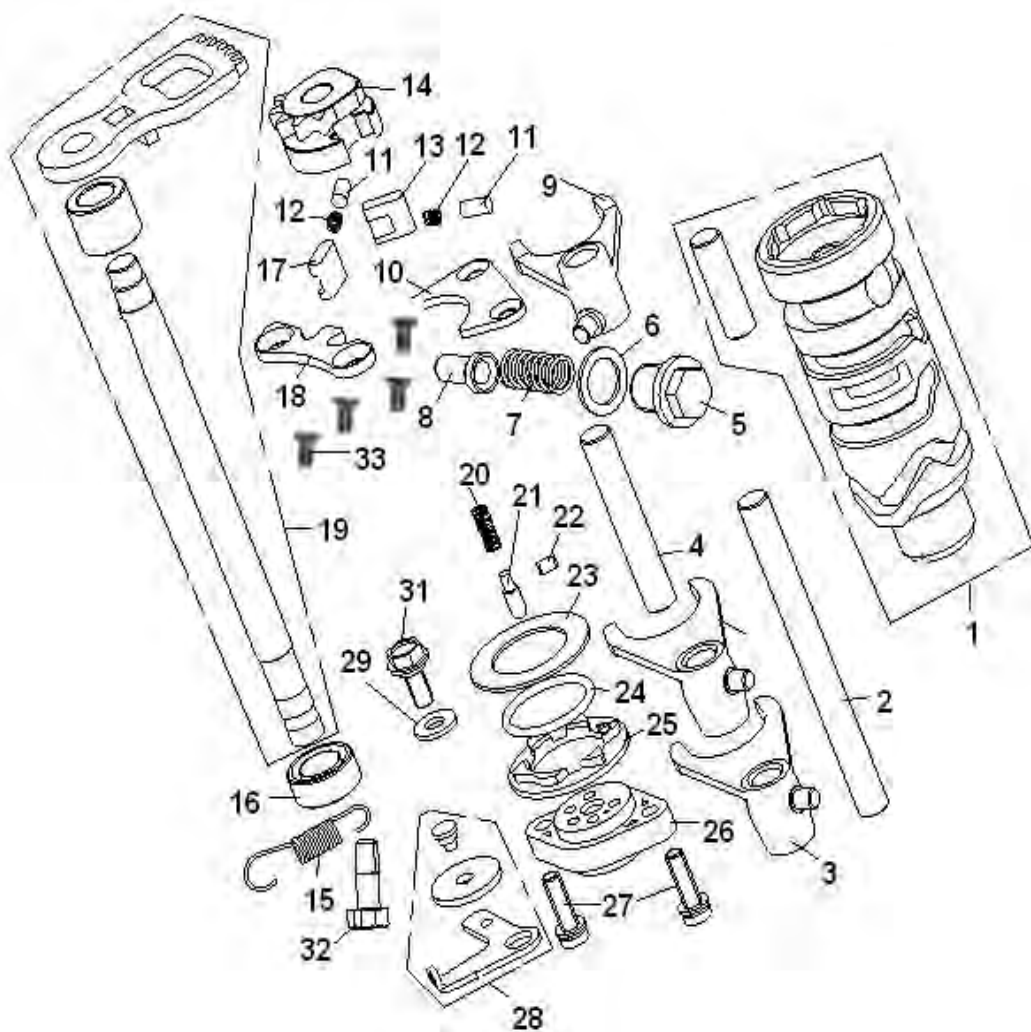
# E11变档机构分总成 GE

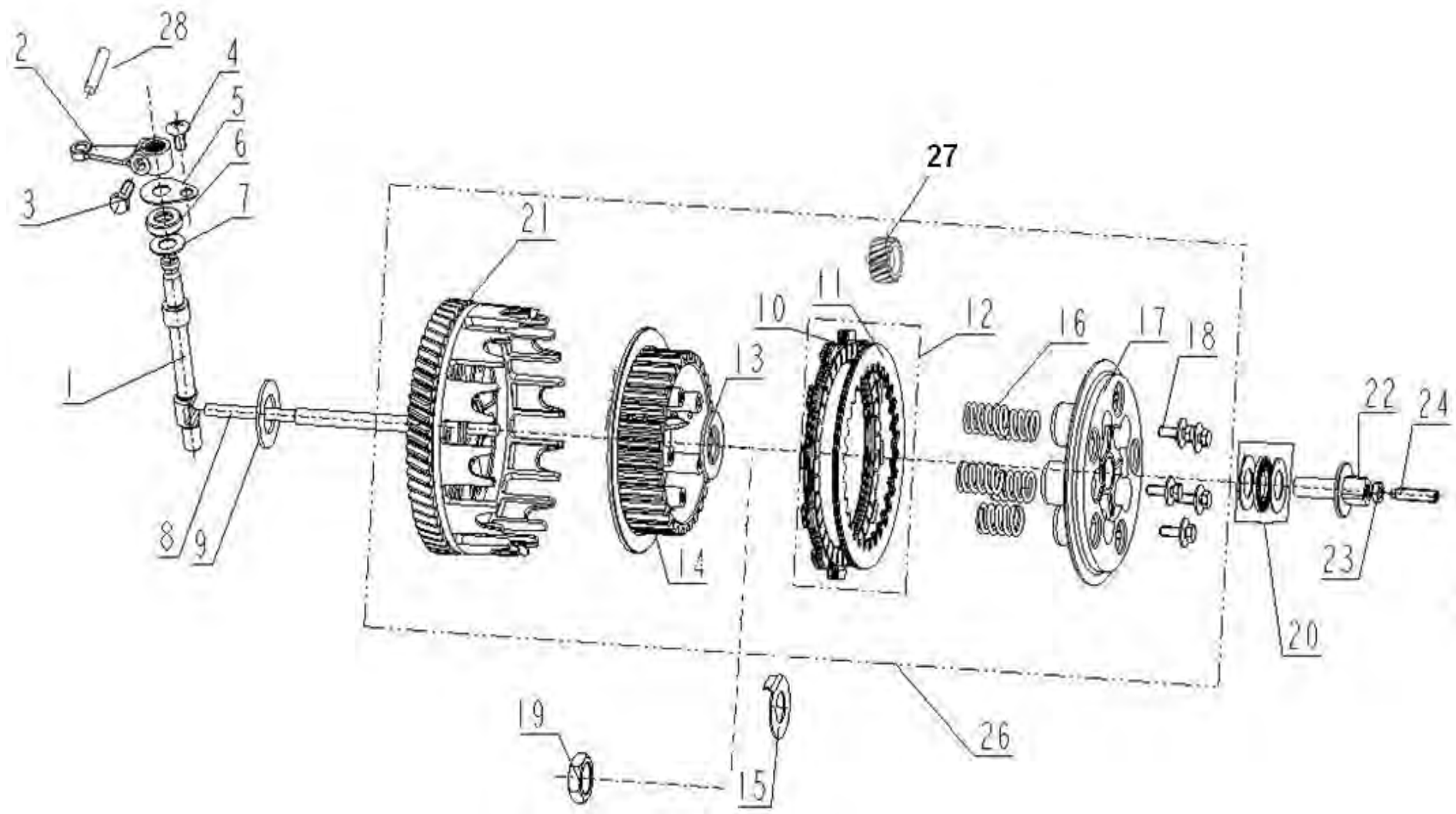
序号 零件号码



使用数量 备注

NO.	PART NO.	EN DESCRIPTION	QTY	NOTES
1	250043090000	DRUM, GEAR SHIFT	1	
2	219093090000	SHAFT,GEAR SHIFT	1	
3	219103090000	FORK	2	
4	219083090000	SHAFT, SHIFT FORK	1	
5	160093090000	THE SPIRAL STOPS UP	1	
6	150093090000	GASKET SEAL	1	
7	210393090000	LATCH SPRING	1	
8	210383090000	NEUTRAL LATCH	1	
9	219113090000	FORK	1	
10	250063090000	ON NOTCH WHEEL THRUSTPLATE	1	
11	210303090000	NOTCH WHEEL BACK-UP POST	2	
12	210283090000	RATCHET SPRING	2	
13	210273090000	RIGHT PAWL	1	
14	250083090000	CHANGES THE FILES NOTCH WHEEL MODULE	1	
15	210363090002	ABUT ARM EXTENSION SPRING	1	
16	210373090000	OIL SEAL	1	
17	210293090000	LEFT PAWL	1	
18	250033090000	UNDER NOTCH WHEEL THRUSTPLATE	1	
19	219063210000	SHAFT, GEAR SHIFT	1	
20	210313090000	SPRING	1	
21	210323090000	ANTENNA	1	
22	B091404006B0	PIN B4×6	1	
23	250073090000	WASHER	1	
24	B190102580B0	O RING25.8×2.65	1	
25	210253090000	CHANGES GRADE OF DRUM BACK PLATE	1	
26	210263090002	FILES POSITION CONTACT DEVICE	1	
27	B13080502022	SCREW W/WASHER M5×20	2	
28	210353090002	ABUT ARM MODULE	1	
29	210343090000	WASHERS 6	1	
31	210333090000	MOVE BOLT M6	1	
32	150263090000	BOLTS M4X10	1	
33	B02010601263	SCREW M6X12	4	





**E12离合器分总成 CLU1**

序号 零件号码



使用数量 备注

NO.	PART NO.	EN DESCRIPTION	QTY	NOTES
1	129083090000	CAMSHAFT	1	
2	209073090000	SEPARATION RELEASE LEVER	1	
3	B01010601663	BOLT M6×16	1	
4	B02060601224	CROSS TROUGH FLAT CUP HEAD SCREW M6×12	1	
5	200173090000	CLIP	1	
6	200023090000	TUMBLER AXIS OIL SEAL	1	
7	200013090000	WASHER, THRUST	2	
8	200013210000	PUSH ROD	1	
9	200043090000	WASHER, THRUST	1	
10	200083090000	PLATE, DRIVE	5	
11	200093090000	PLATE, DRIVE	4	
12	200473090000	CLUTCH ASSY	1	
13	200053090000	SPACER	1	
14	200073090000	HUB, CLUTCH SLEEVE	1	
15	200163090000	LOCKING WASHER	1	
16	200113090000	SPRING	5	
17	200103090000	PRESSURE PLATE	1	
18	B13140501604	SCREW W/WASHER M5×16	5	
19	200153090000	PIECE, DIRVE	1	
20	200123090000	NEEDLE BEARING	1	
21	200063090000	GEAR, PRIMARY DRIVE	1	
22	200143090000	SEAT, BEARING	1	
23	B04020600003	HEXAGONAL THIN NUT M6	1	
24	20013309001X	SCREW M6	1	
26	209013210000	CLUTCH ASSY	1	
27	170393210000	GEAR DRIVE	1	
28	B090406014A5	SHAFT M6×14	1	

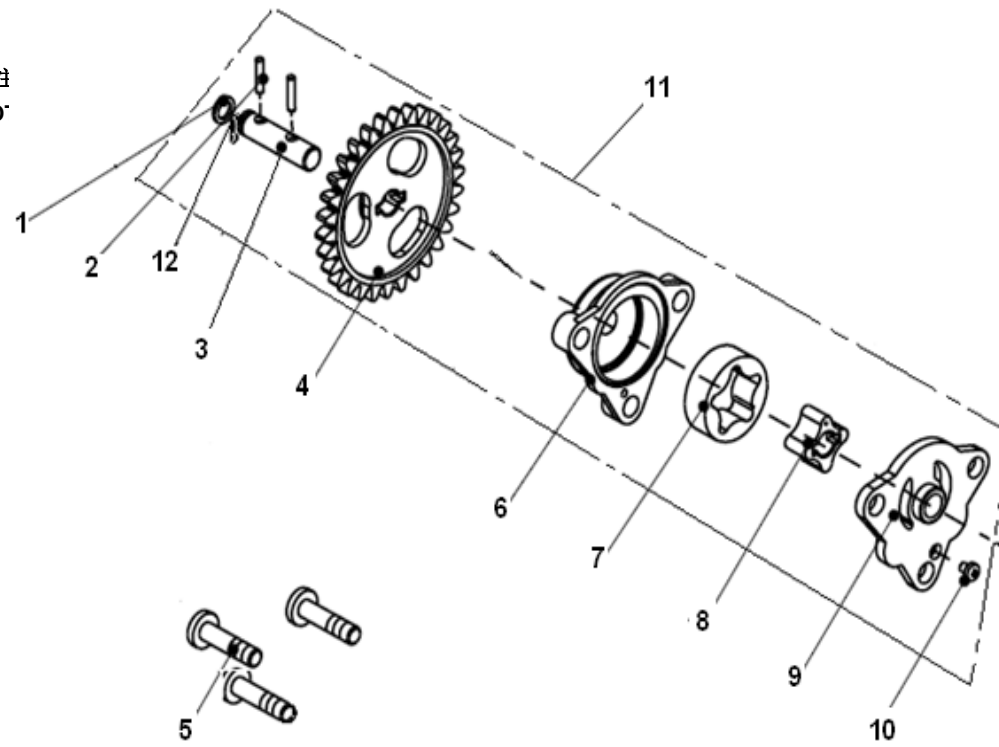
E13机油泵分总成 OIL F

序号 零件号码



使用数量 备注

NO.	PART NO.	EN DESCRIPTION	QTY	NO.
1	B08030000601	RING 6	1	
2	B091404006B0	PIN B4×6	1	
3	260063090000	OIL PUMP SHAFT	1	
4	260053090000	GEAR OIL PUMP	1	
5	B01070602563	BOLT M6×25	3	
6	260043090000	OIL PUMP BODY	1	
7	260033090000	ROTOR	1	
8	260023090000	OIL PUMP INNER ROTOR	1	
9	260013090000	OIL PUMP EXTERNAL ROTOR	1	
10	B02000300522	SCREW	1	
11	269003090000	OIL PUMP ASSY	1	
12	B07050000602	WASHER 6	1	



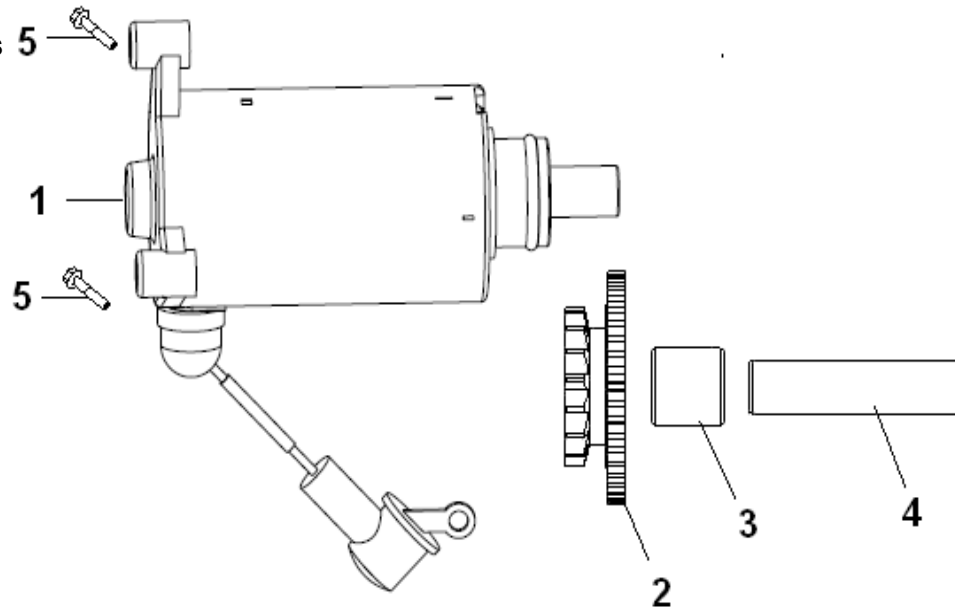
### E14起动机分总成STA

序号 零件号码



使用数量 备注

NO.	PART NO.	EN DESCRIPTION	QTY	NOTES
1	249013210010	STARTER MOTOR ASSY.COMP.GRAY	1	
2	249043090000	START TURN IDLENESS	1	
3	240013090000	BUSHING BLOCK	1	
4	240023090000	HINGE PIN	1	
5	B01070603564	BOLT M6×35	2	



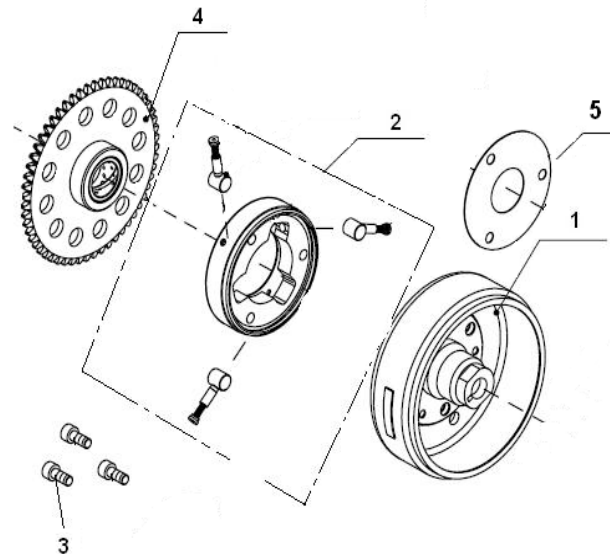
### E15磁电机分总成 MAG

NO. PART NO.

EN DESCRIPTION

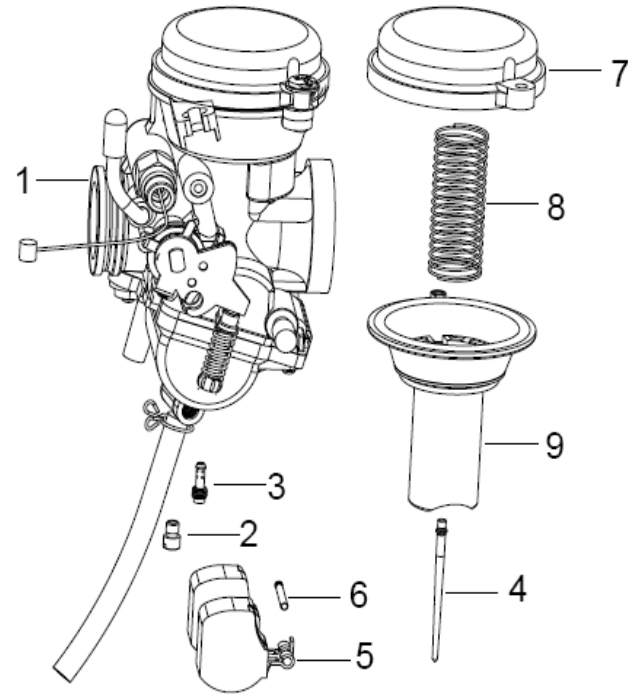
QTY NOTES

1	299023090002	ROTOR ASSY	1	
2	249093230000	GEAR,STARTER	1	
3	B02050601462	BOLT M6×14	3	
4	240043090000	DRIVEN GEAR,STARTER	1	
5	240013240000	WASHER	1	

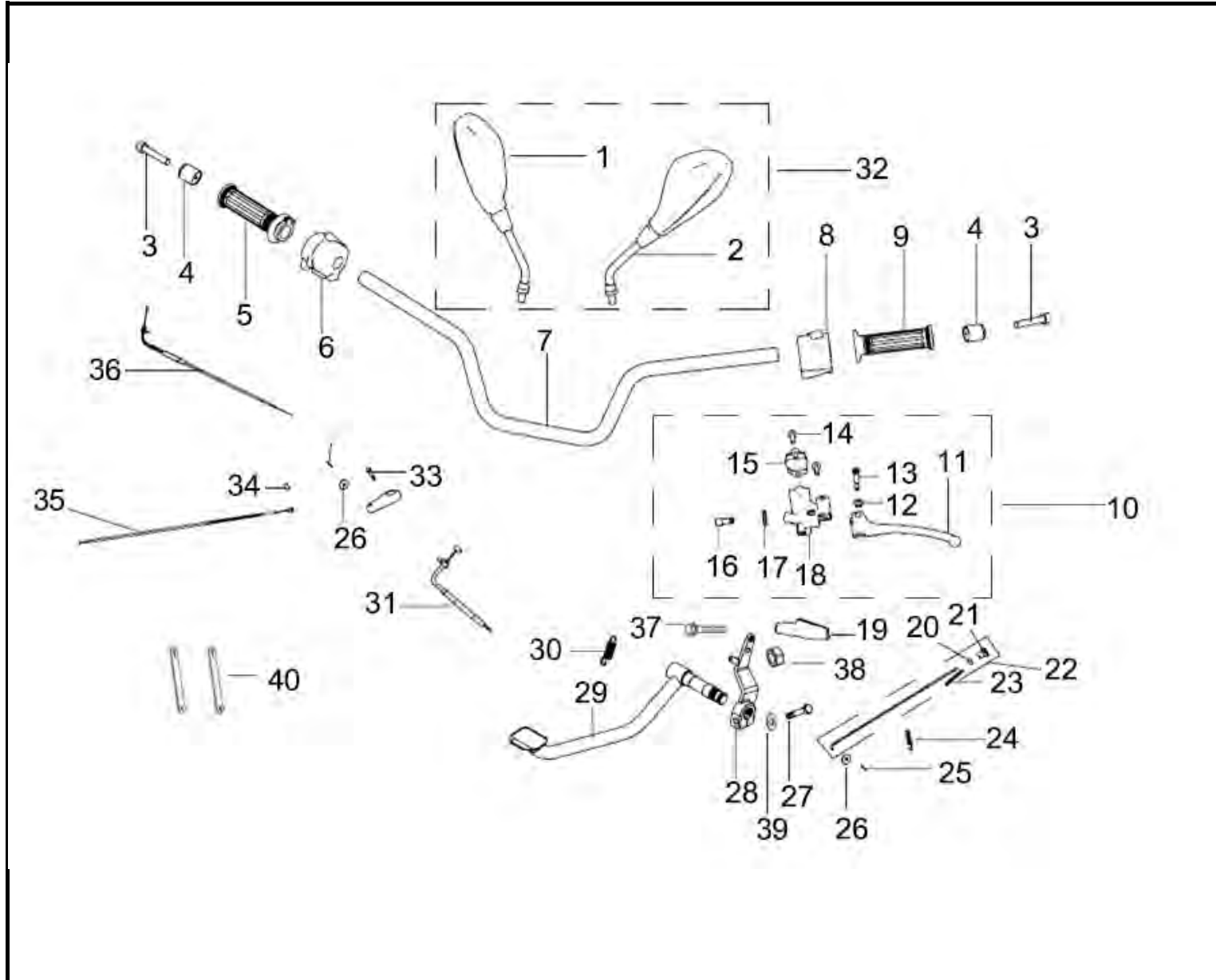


**E16化油器分总成 CARI**

NO.	PART NO.	EN DESCRIPTION	QTY	NOTES
1	3300016M0000	CARBURETORASSY,MJ190#,NJ37.5#	1	
2	3311516M000A	MAIN JET 190#	1	
3	3312416M0000	IDLE JET 37.5#	1	
4	3324216M0000	NEEDLE	1	
5	3340116M0000	FLOAT	1	
6	3340616M0000	PIN,FLOAT	1	
7	3322416M0000	SPRING	1	
8	3328216M0000	COVER ASSY.UPPER	1	
9	3322216M0000	VALVE ASSY.PISTON	1	





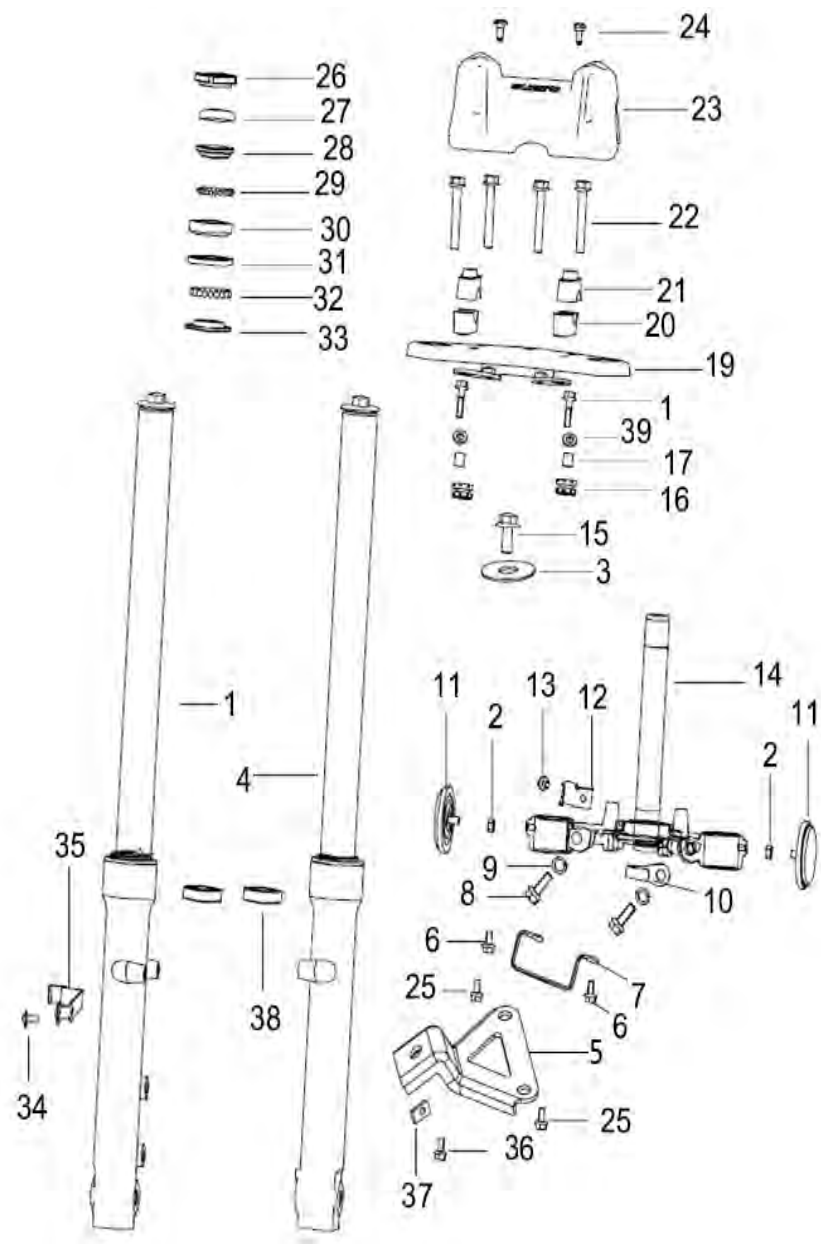


序号 NO.	零件编码 Part No.	零件名称 EN DESCRIPTION	数量 QTY.	变更 DESIGN CHANGE	日期 DATE	适用性 APPLY	备注 REMARK
1	40480J210000	mirror assy.,rr view,r.	1				

2	40450J210000	mirror assy.,rr view,l.	1				
3	B02050603565	screw M6×35	2				
4	40031J000022	mirror assy.,rr view,l.	2				
5	40210J670000	grip assy.,handle,r.	1				
5	40210J670010	grip assy.,handle,r.		字字字字	0,36		
6	40600J820000	switch assy.,r.	1				
7	40100K670012	handle bar assy	1				
8	40500J820000	switch assy.,l.	1				
9	40001J670000	grip assy.,l.	1				
9	40001J670010	grip assy.,l.					
10	40080J800000	lever assy.,l.	1				
11	40084J800000	lever.,l.	1				
12	B04170600055	nut M6	1				
13	45024K010000	mounting bolt,handle	1				
14	B01070602565	bolt M6×25	1				
15	45023K010000	cover,fix	1				
16	40086K010000	spiraltube,adjusting	1				
17	40087K010000	nut	1				
18	40085K060000	mirror seat,rr.view,l	1				
19	40017J130000	jacket,front brake cable	1				
20	B18091202005	pin column 12×20	1				
21	40271J000000	brake nut,adjusting	1				
22	40280J000000	brake draw rod assembly	1				
23	40274J000030	sping,rear brake	1				
24	40019J000020	pull soring	1				
25	B090002018A5	pin 2×18	2				
26	B07030000605	washer 6	2				
27	B01090803065	bolt M8×30	1				
28	40730J00000B	connector assy.	1				
29	40710J830000	pedal comp.,rr.brake	1				
30	40709J060006	spring,rr.brake pedal	1				
31	40350J830000	cable assy.,	1				
32	40440J300002	mirror assy.,rr view,	1 set				
33	B01010601625	bolt M6×16	1				
34	B090406014A5	shaft 6×14	1				
35	40400K690000	clutch line components	1				
36	40300J830000	cable assy.,throttle	1				
37	B01010604005	bolt M6×40	1				
38	B04000600055	nut 6	1				
39	B07010001605	washer 16	1				
40	49371T620000	clip□rubber	2				

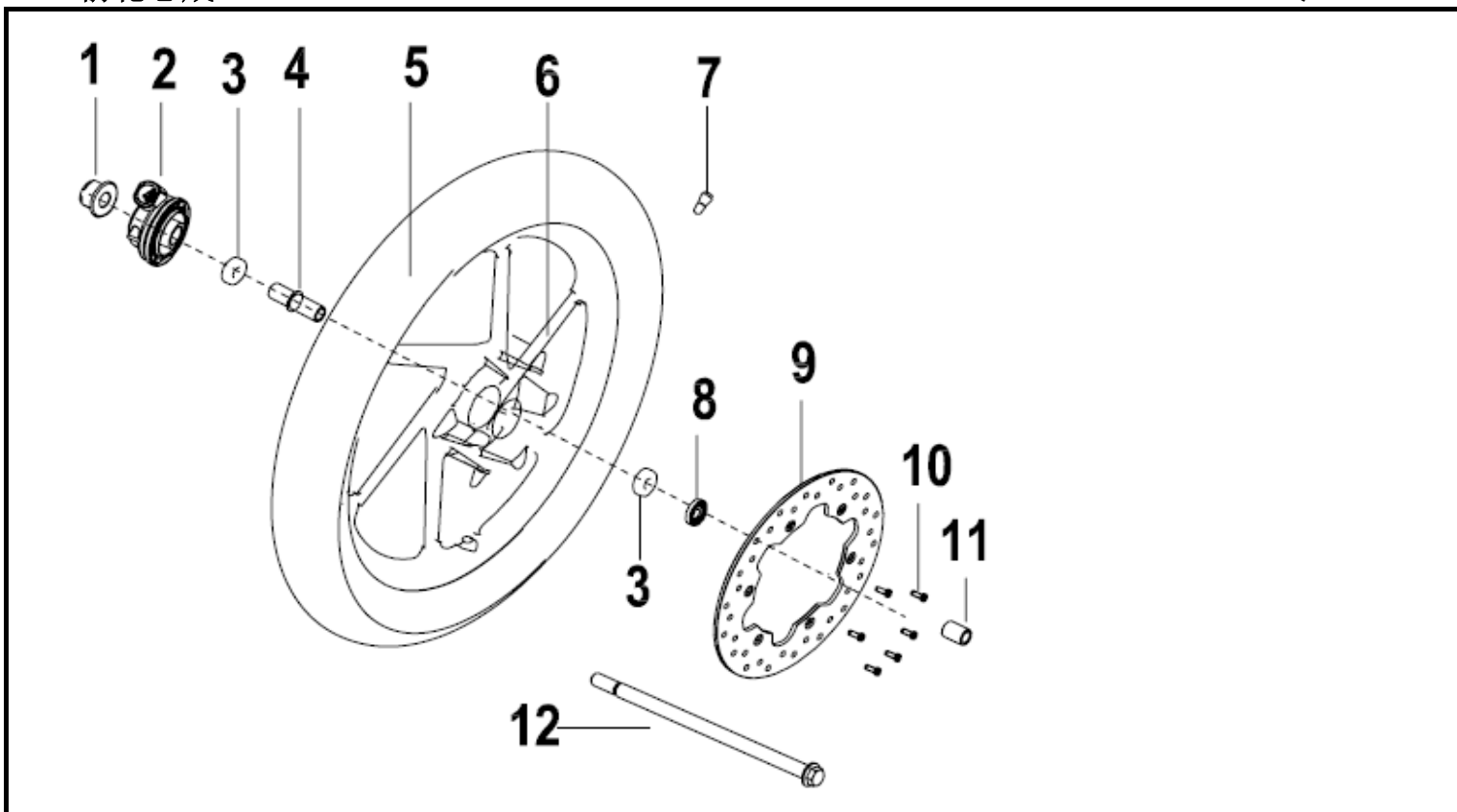
# F02 前叉 FRONT FORK ASSY.

QJ125-26A



NO.	Part No.	EN DESCRIPTION	QTY.	DESIGN CHANGE	DATE	APPLY	REMARK
4	43300J820000	front right shock absorber assy.	1				
1	43300J820001	front right shock absorber assy.		BLACK	####		
2	B04000600000	nut M6	2				
3	43025K670000	gasket,mounting	1				
4	43200J820000	front left shock absorber assy.	1				
4	43200J820001	front left shock absorber assy.		BLACK			
5	08345J820000	bracket,head light lower	1				
6	B01090601265	bolt M6×12	2				
7	43035J300000	clip	1				
8	B01591003565	bolt M10×1.25×35	2				
9	B07000001005	spring washer 10mm	2				
10	43057J000070	clip	1				
11	86300N060000	reflector assy	2				
12	43035J820000	clip	1				
13	B13110601205	bolt M6×12	1				
14	43102J820000	under bracket comp.assy	1				
15	43049J000000	bolt M10×1.25×23	1				
16	65618J820000	rubber cushion	2				
17	65913J820000	spacer	2				
18	B01090603065	bolt M6×30	2				
19	43450J820001	upper bracket assy,	1				
20	43013J000000	seat,handlerbar,	2				
21	43014J020001	seat,handlerbar,upper	2				
22	B01090805563	bolt M8×55	4				
23	43005J820000	cover,lock,power	1				
24	B0284060150A	screw M6×15.2	2				
25	B01070601265	bolt M6×12	2				
25	301090601265	bolt M6×12					
26	43005G130000	dust cover	1				
27	43008G130010	nut	1				
28	43001G130000	upper cuo,upper bearingu	1				
29	B06010140000	steel shot	1 set 23				
30	43002G130000	lower cup,upper bearing	1				
31	43003N040000	race,upper,bottom bearing	1				
32	B06010200000	steel shot	1 set 19				
33	43004J000000	race,lower,bottom bearing	1				
34	B13110601205	screw w/washer M6×12	1				
35	65112J820000	clip	1				

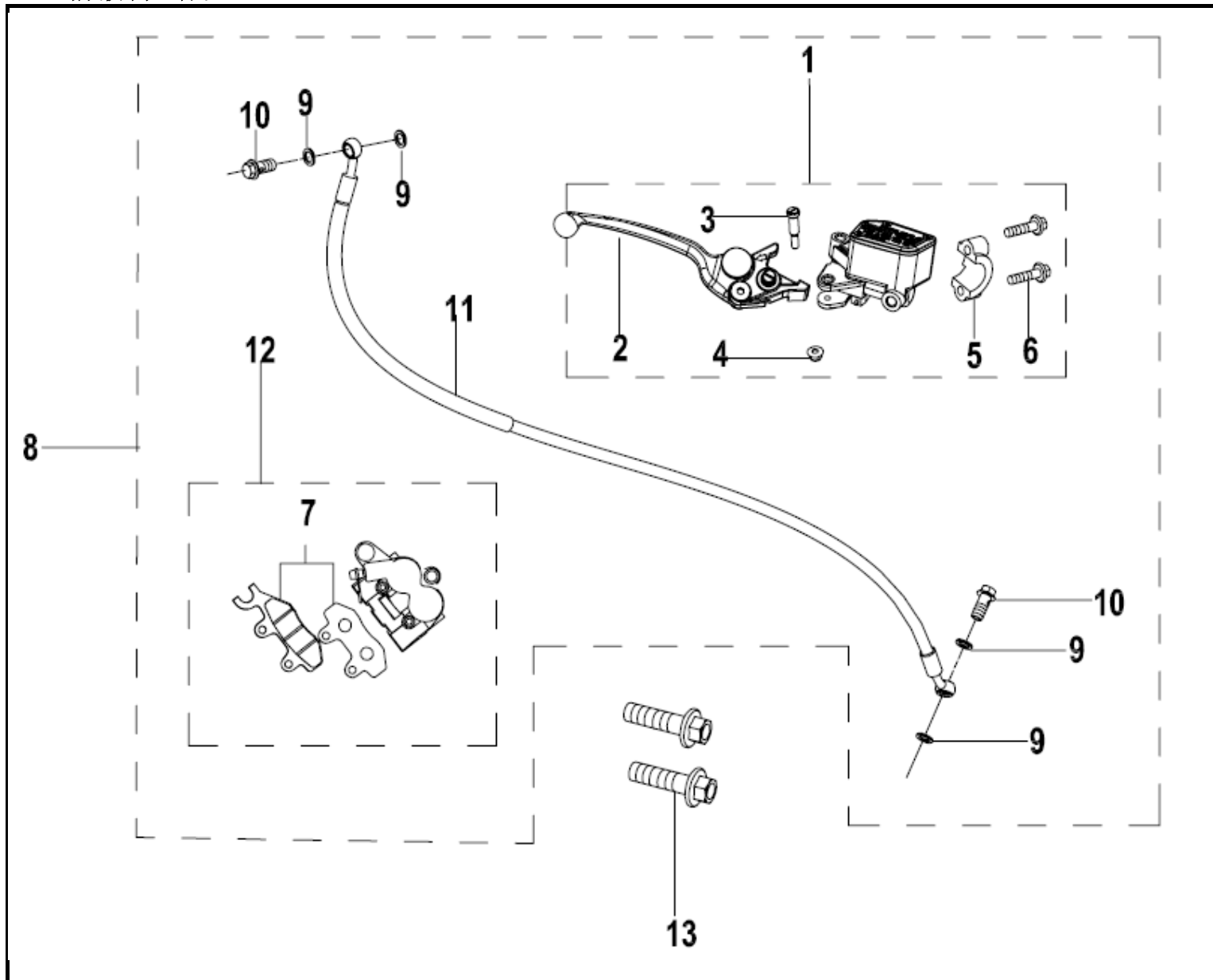




序号 NO.	零件编码 Part No.	零件名称 EN DESCRIPTION	数量 QTY.	变更 DESIGN CHANGE	日期 DATE	适用性 APPLY	备注 REMARK
1	B04171212555	nut M12×1.25	1				
2	44200J820001	seat assy.,gear wheel,	1				
3	B12016030100	bearing	2				
4	44006J820000	the middle of bushings front	1				
5	B141104F171Z	inner tube&tyre 90/90-17	1				
6	44101J820000	front wheel disk.	1				
7	B1404Z1102A0	valve cap	1				
8	44300J000000	oil seal assy,front wheel	1				
9	45033J820000	front brake disc	1				
10	45036D010000	mounting seat,fluid brake M6×16	6				
11	44016J820000	right shaft sleeve,front wheel	1				
12	44004T090011	axil,front wheel M12×1.25×249	1				

F04 前液刹总成 FRONT DISK BRAKE ASSY.

QJ125-26A

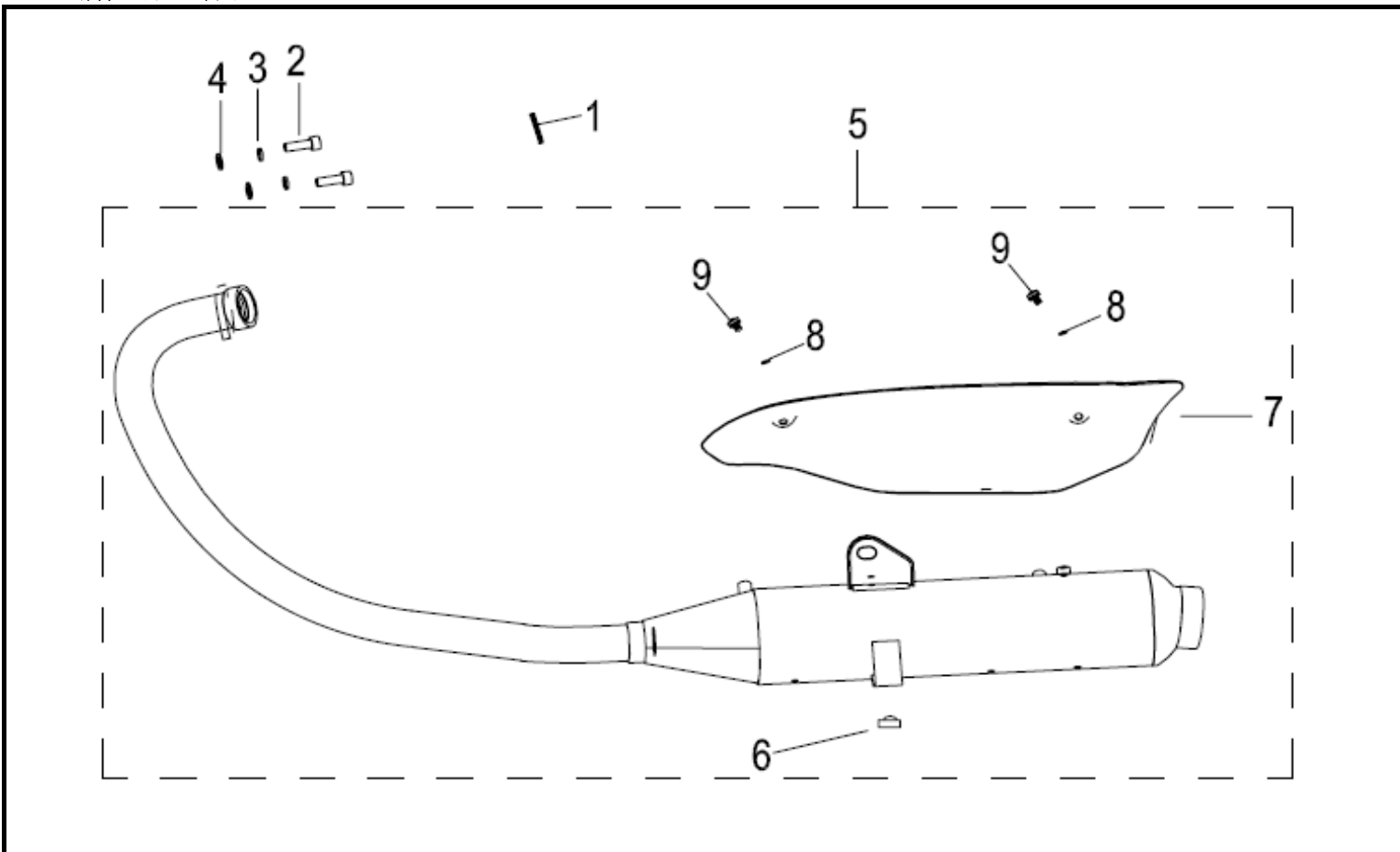






F05 消声器总成 MUFFLER ASSY.

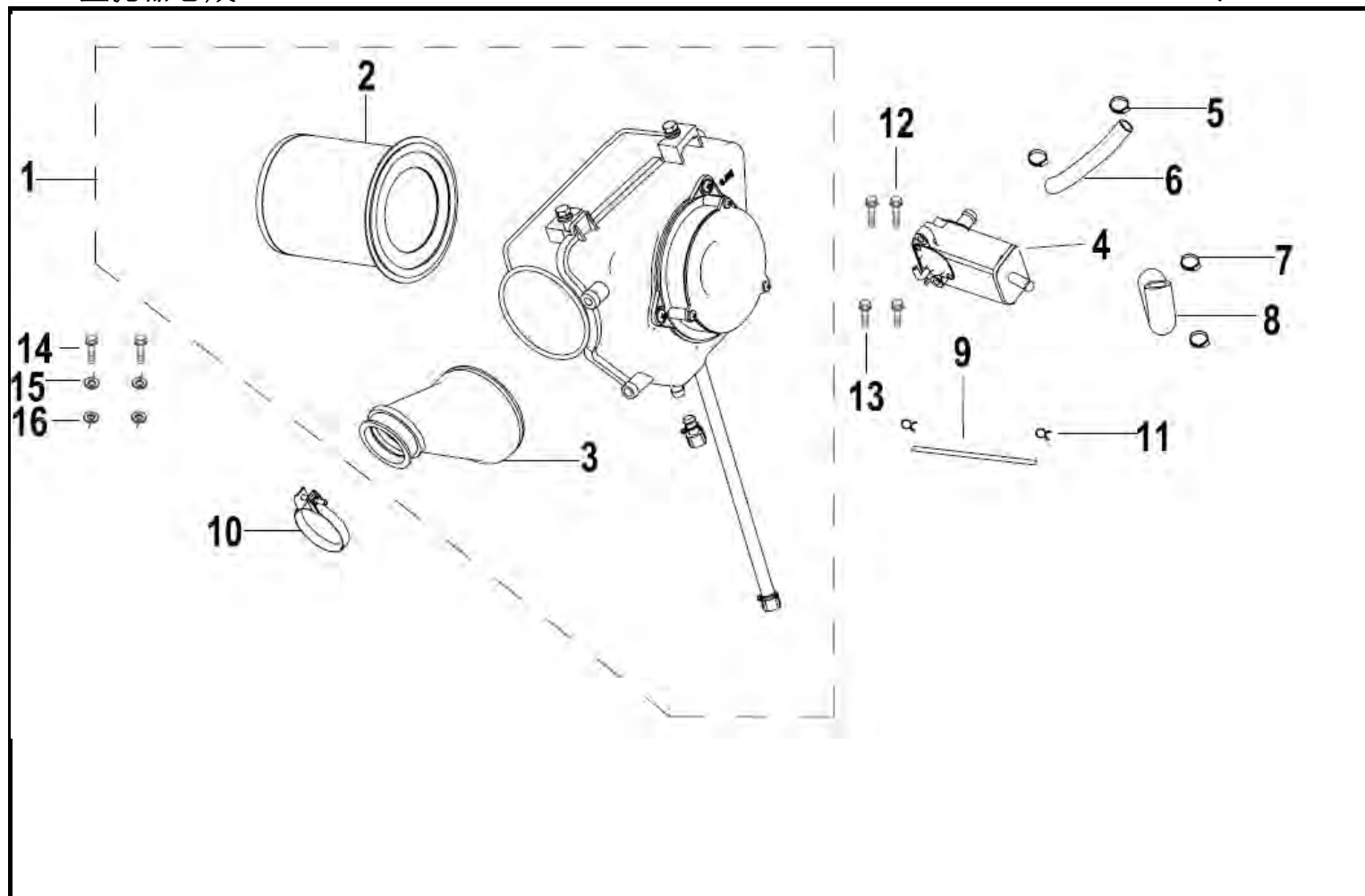
QJ125-26A



序号	零件编码	零件名称	数量	变更	日期	适用性	备注
NO.	Part No.	EN DESCRIPTION	QTY.	DESIGN CHANGE	DATE	APPLY	REMARK
1	47800J060000	gaskte assy□exhaust pipe	1				
2	B0205080306L	screw M8×30	2				
3	B07030000804	washer 8	2				
4	B07000000804	washer 8	2				
5	47100J83004Z	muffler comp.	1				
6	47026J000000	muffler buffer rubber	1				
7	47023J820000	muffler decorative	1				
8	08022N050000	insulation spacers	2				
9	B1304060100A	screw and washer assembly M6×10	2				

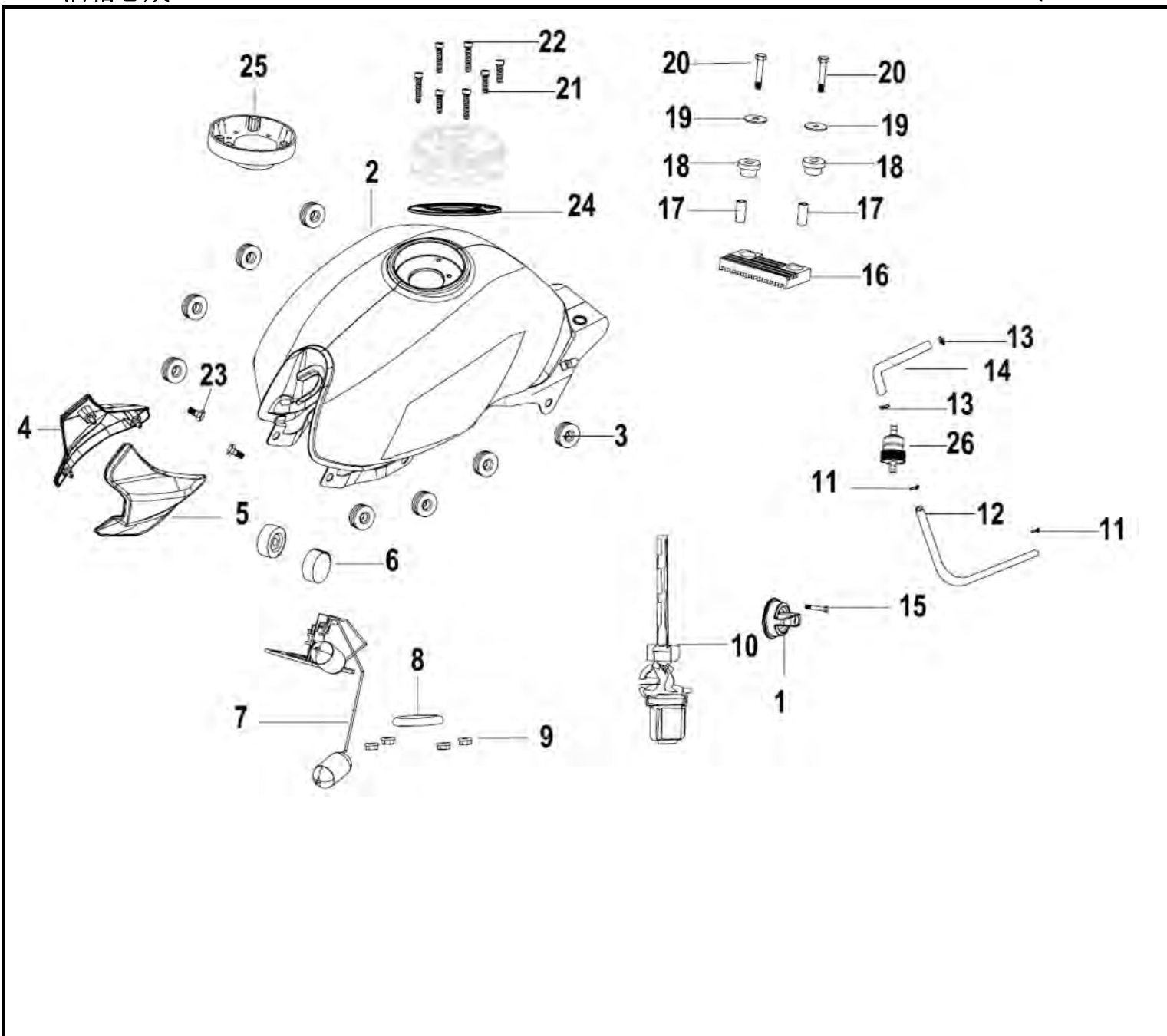
## F06 空滤器总成 AIR CLEANER ASSY.

QJ125-26A



序号	零件编码	零件名称	数量	变更	日期	适用性	备注
NO.	Part No.	EN DESCRIPTION	QTY.	DESIGN CHANGE	DATE	APPLY	REMARK
1	49100J830001	air cleaner	1				无触媒
2	49200J210000	filter	1				
3	49005J830001	pipe.air outlet	1				
4	49810J610000	stop vavle asm	1				
5	49805G120000	plate clamp $\Phi 14.5 \times 12 \times 0.8$	2				
6	49821J570000	the connecting pipe between stop valve and engine $\Phi 9 \times \Phi 15 \times 150$	1				
7	49855J000000	heat pipe clamp $\Phi 16.5$	2				

8	55065H030000	oil tube	1				
9	B16010424001	oil tube 4×2×400	1				
10	49350J000010	clamp assy.	1				
11	50306T450010	plate clamp Φ8	2				
12	B01090602065	bolt M6×20	2				
13	B01090601265	bolt M6×12	2				
14	B01010601625	bolt M6×16	2				
15	B07000000605	washer 6	2				
16	B07030000605	washer 6	2				

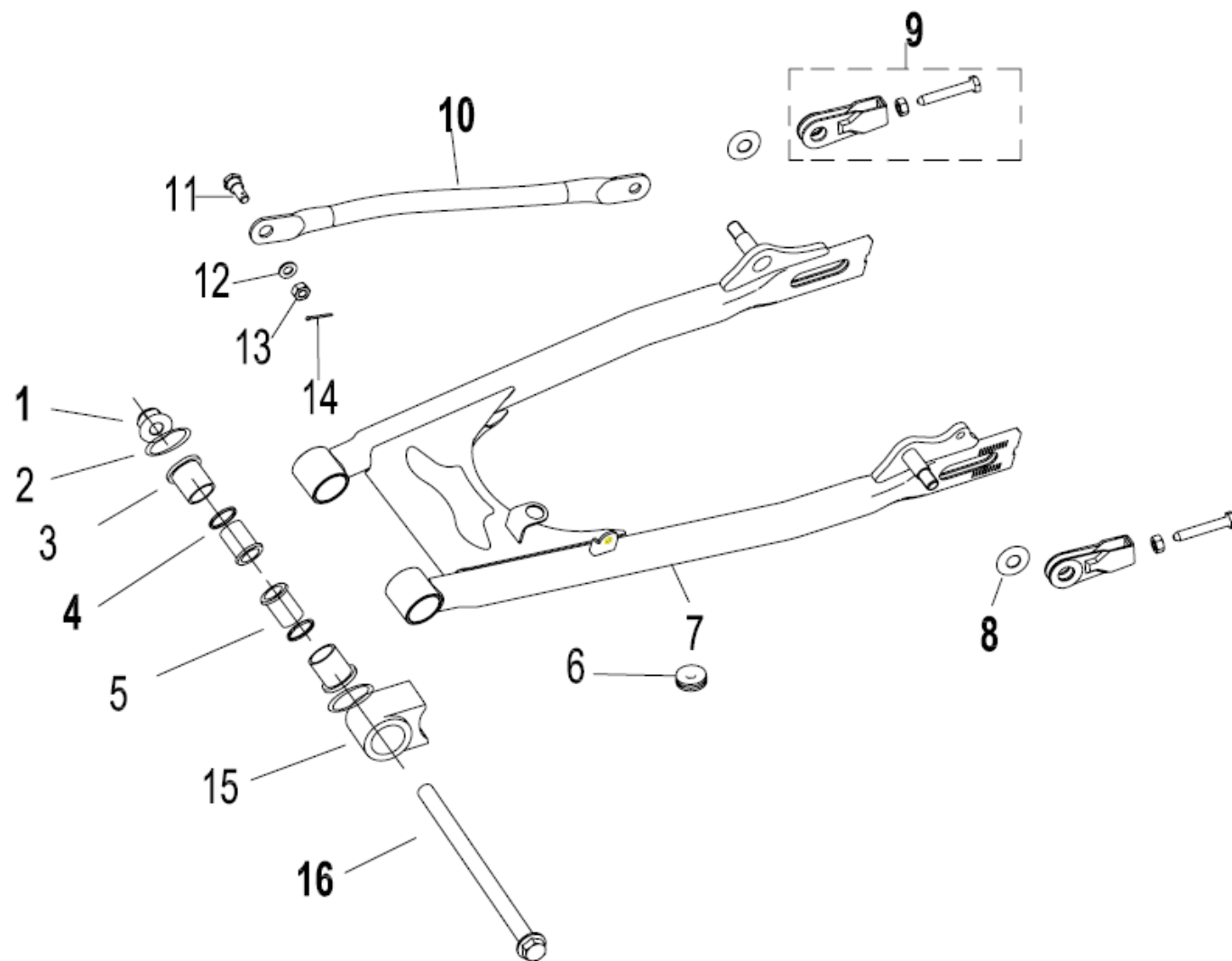






# F09 后摆臂总成 REAR SWINGING ARM ASSY.

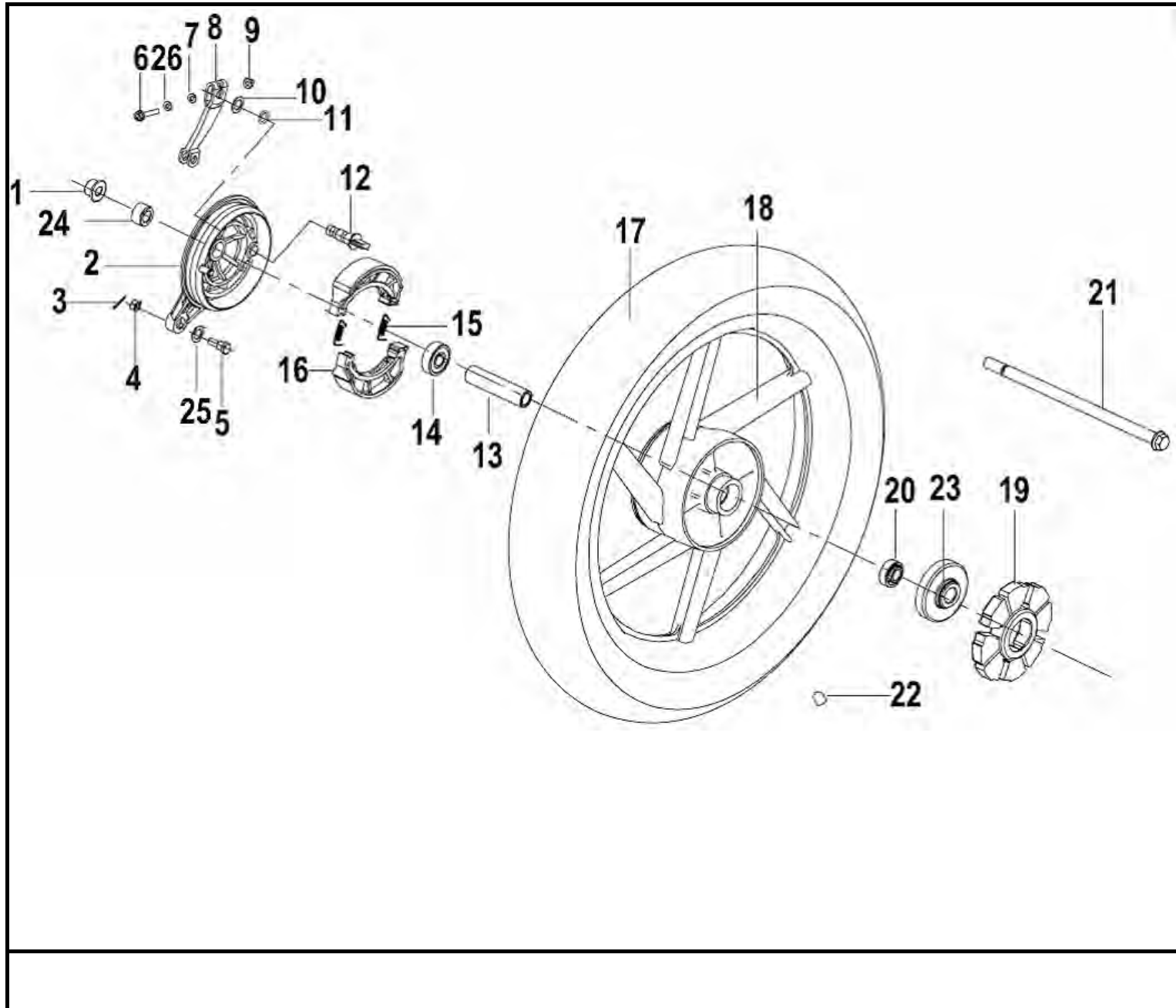
QJ125-26A







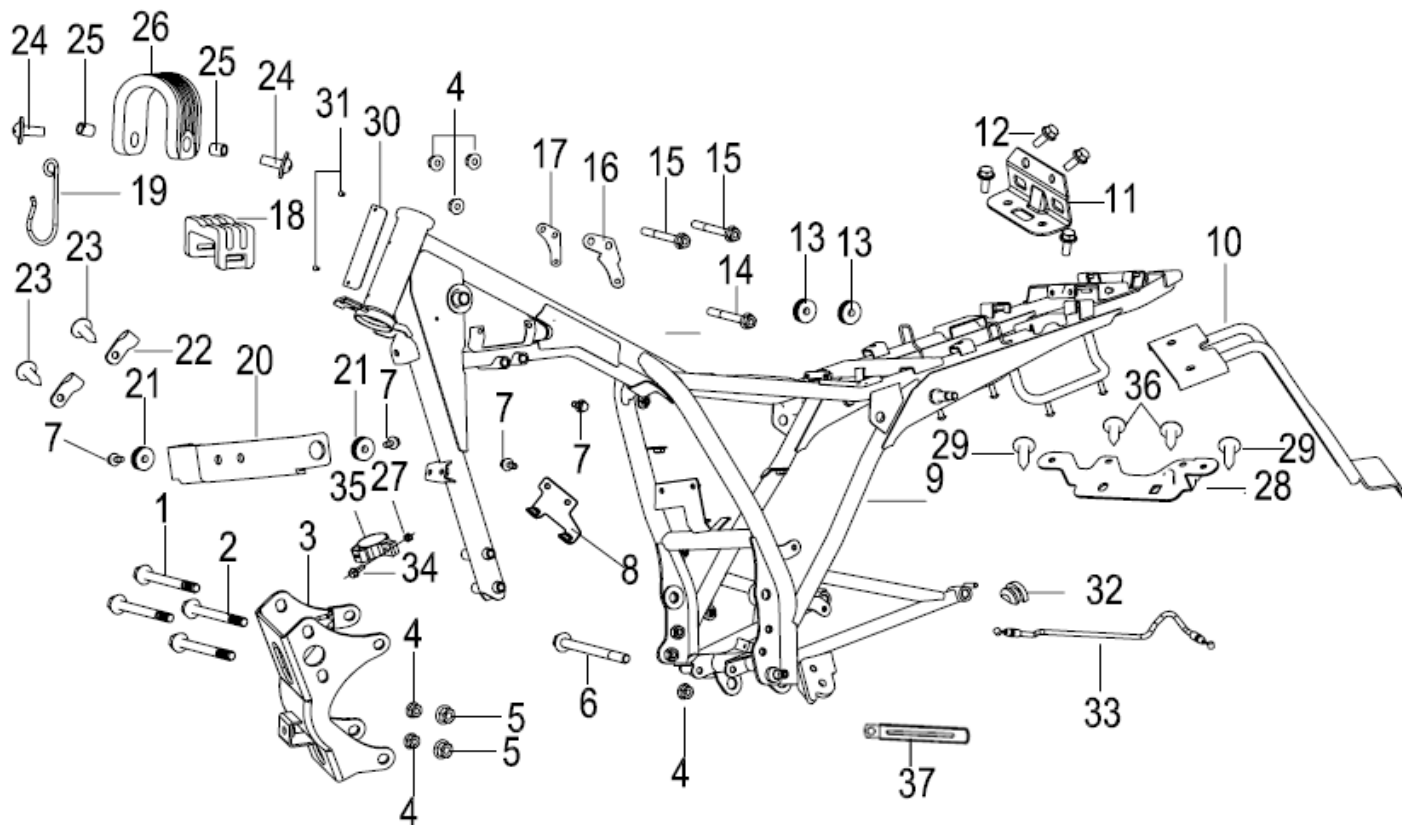
# F10 后轮总成 REAR WHEEL ASSY.





## F11 车架 FRAME BODY ASSY.

QJ125-26A



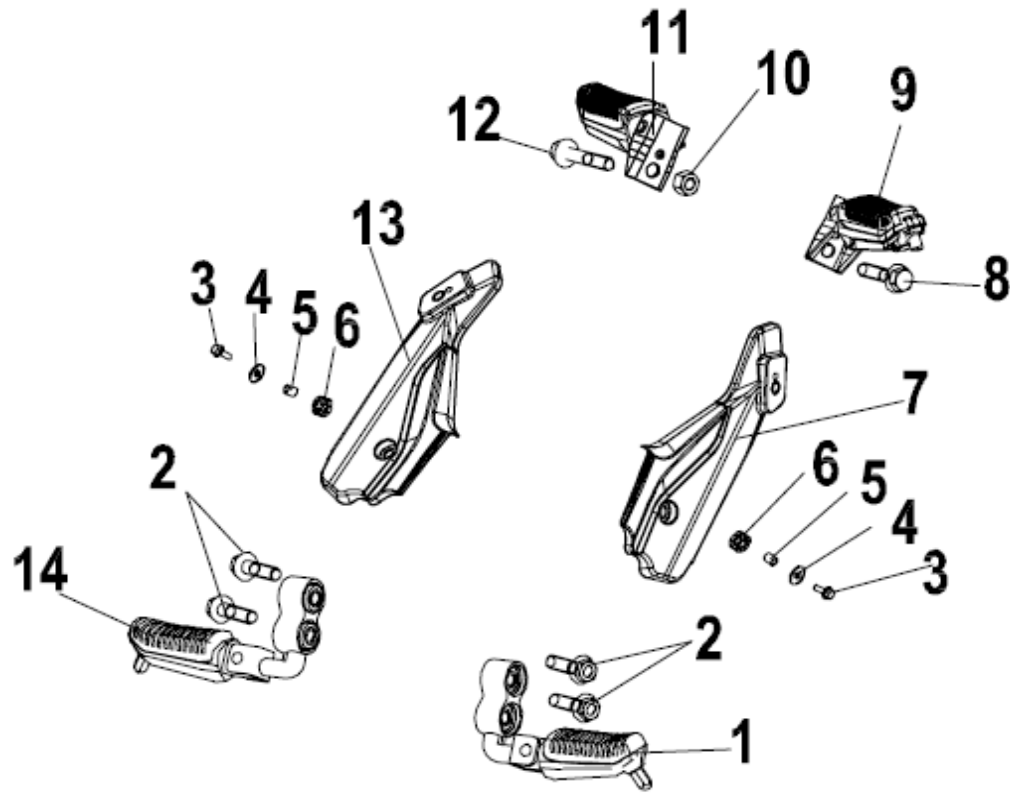
序号	零件编码	零件名称	数量	变更	日期	适用性	备注
NO.	Part No.	EN DESCRIPTION	QTY.	DESIGN CHANGE	DATE	APPLY	REMARK
1	B01090808065	bolt M8×80	2				
2	B01591010065	bolt M10×1.25×100	2				
3	57020J830001	bracket,engine components,fr.	1				
4	B04070800055	nut M8	6				
5	B04011012555	nut M10×1.25	2				
6	B01090808865	bolt M8×88	1				

7	B01090601265	bolt M6×12	4				
8	57050J830000	valve,one-way mounting base	1				
9	57100J830005	frame jointing comp.	1				
10	65770J820000	bracker assy.,rear fender	1				
11	65721J800000	reinforcement plate	1				
12	B01090601665	bolt M6×16	4				
13	65618J000000	rubber cushion,guard board third	2				
14	B01090805565	bolt M8×55	1				
15	B01090807065	bolt M8×70	2				
16	57009J060070	plate,hanging,engine,(left&upper)	1				
17	57008J060070	plate,hanging,engine,(right&upper)	1				
18	57169K670000	rubber fuel tank installation	1				
19	57131J820000	the main cable hook	1				
20	57081J820000	decorating plate,fuel tank connecting board	1				
21	65618J800000	spacer	2				
22	43070D010020	clamp,speedometer assy	2				
23	B05074801305	self-tapping screw ST4.8×13	2				
24	B13060601605	screw and washer assembly M6×16	2				
25	08061K670000	bush	2				
26	50005K670000	rubber fuel tank installation	1				
27	B04000500055	nut M5	1				
28	08307J820000	taillight bracket	1				
29	B05004801605	self-tapping screw ST4.8×16	2				
30	57001J830003	frame plate	1				
31	B10000300600	rivet 3×6	2				
32	57038J110002	seat cushion farrowed rubber stopple	1				
33	58900H180000	seat cushion lasso components	1				
34	B02000502525	screw M5×25	1				
35	57013J000000	clip	1				
36	B05074801305	self-tapping screw ST4.8×16	2				
37	58430J000000	clip assy	1				



F13 踏蹬总成 TREAD PEDAL ASSY.

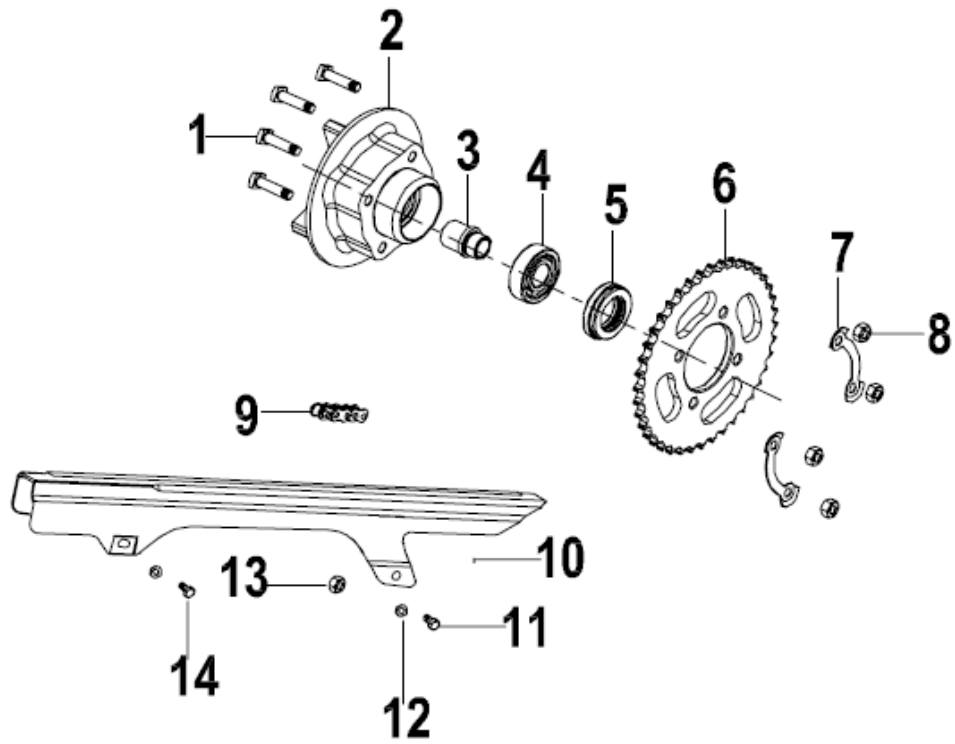
QJ125-26A





F14 驱动总成 SPROCKET WHEEL ASSY.

QJ125-26A



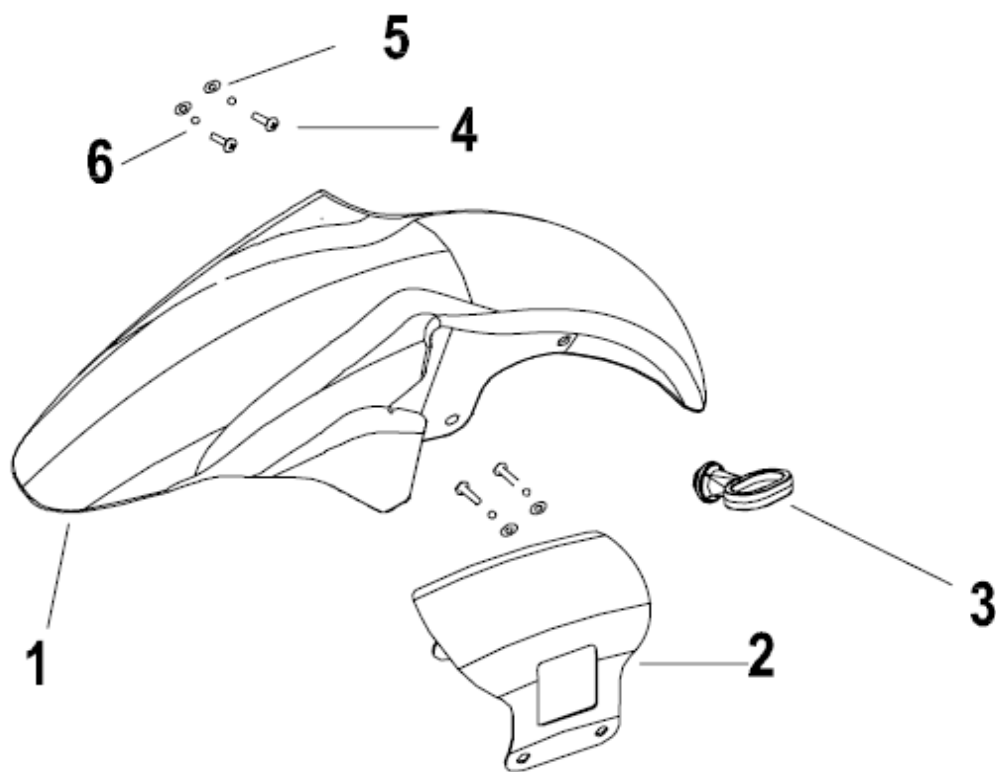






## F16 前泥板 FRONT FENDER ASSY.

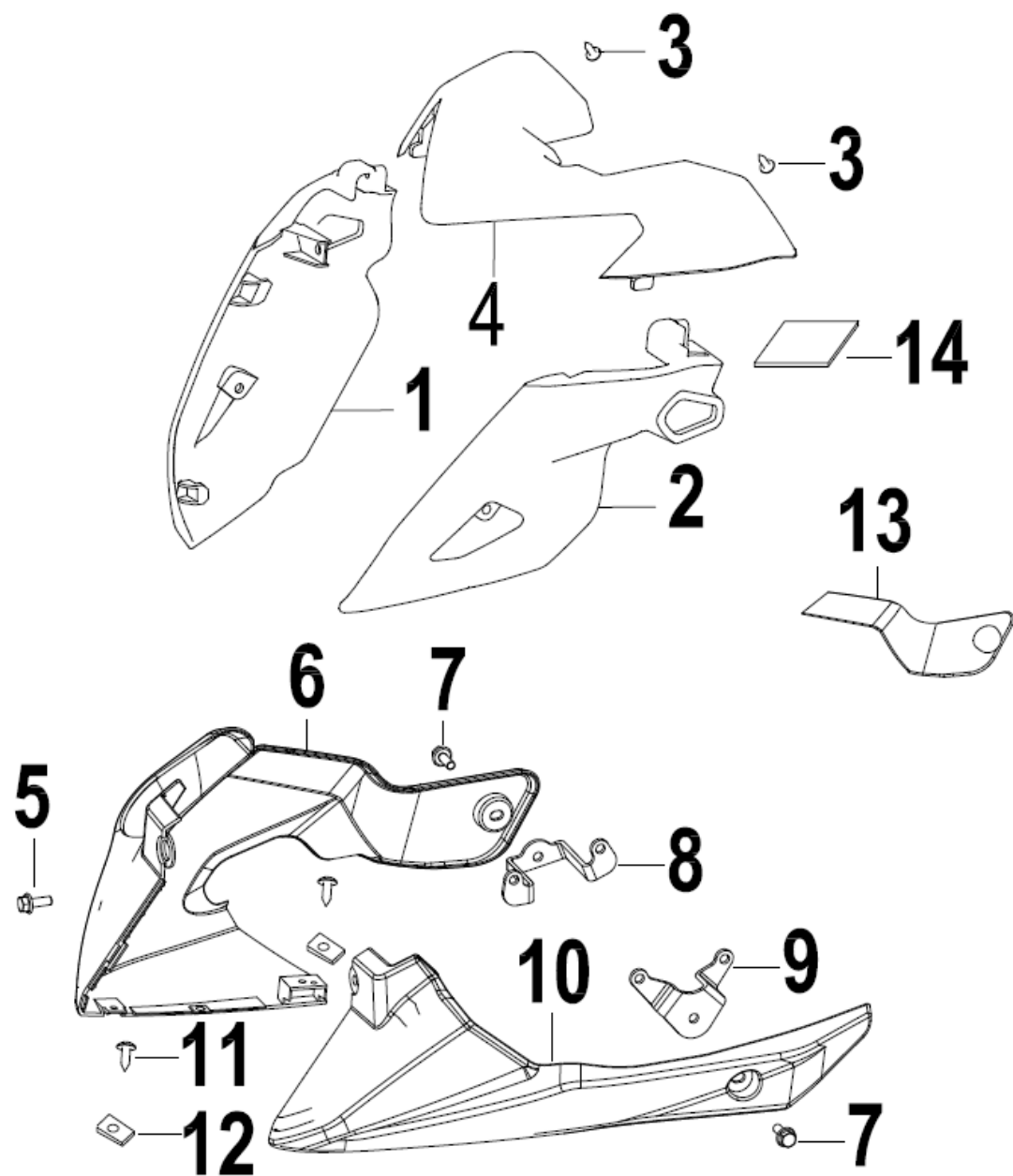
QJ125-26A



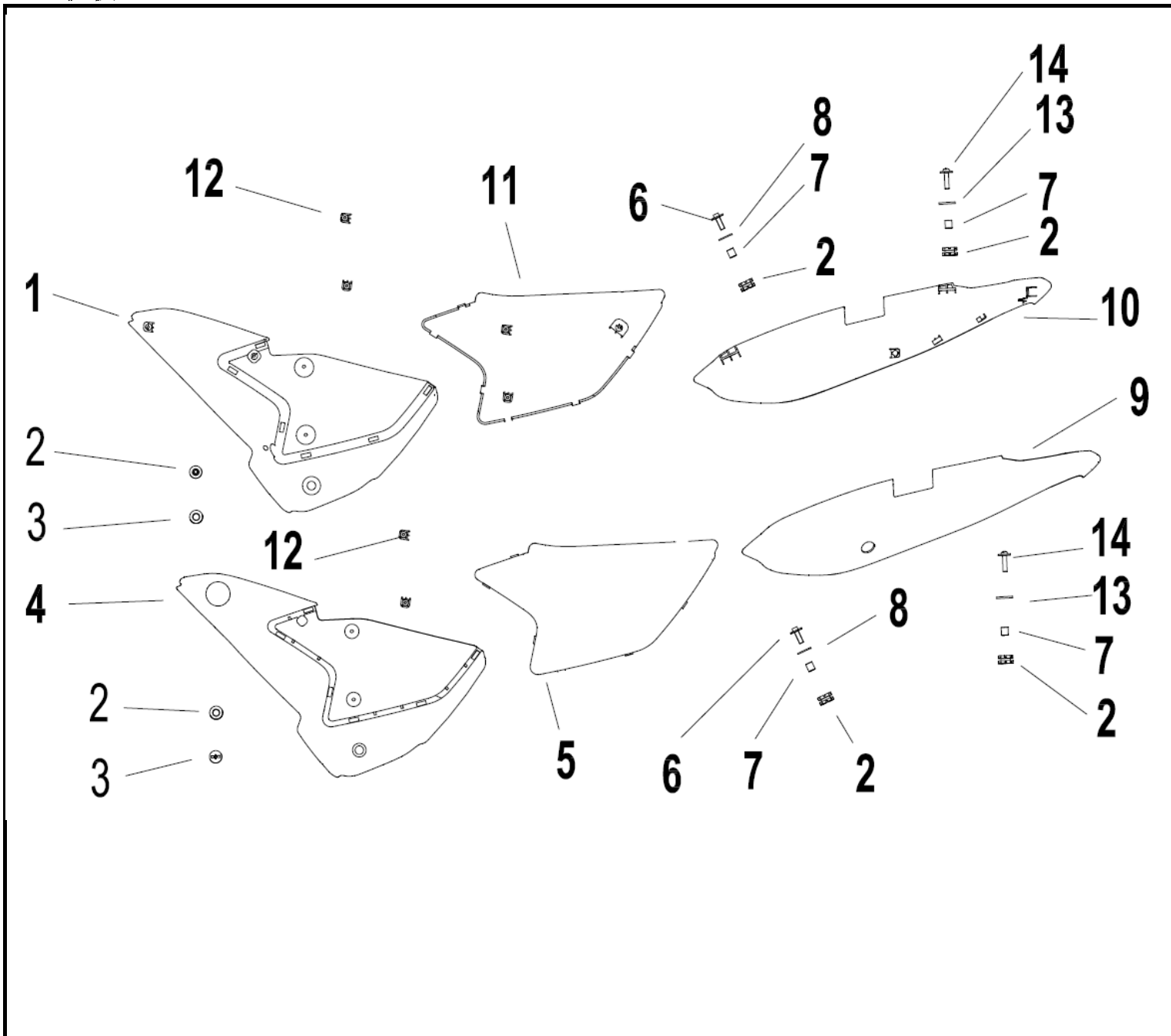
序号	零件编码	零件名称	数量	变更	日期	适用性	备注
NO.	Part No.	EN DESCRIPTION	QTY.	DESIGN CHANGE	DATE	APPLY	REMARK
1	65101J820130	front fender white/black W1/B4	1				
1	65101J820140	front fender silver/black CB/B4	1				
1	65101J820150	front fender black BH/B4	1				
2	65121J820000	front strengthening bracket	1				
3	65113J000000	rubber ring	1				
4	B01010802025	bolt M8×20	4				
5	B07030000805	washer 8	4				
6	B07000000805	washer 8	4				

F17 导流罩总成 FRONT COVER ASSY.

QJ125-26A



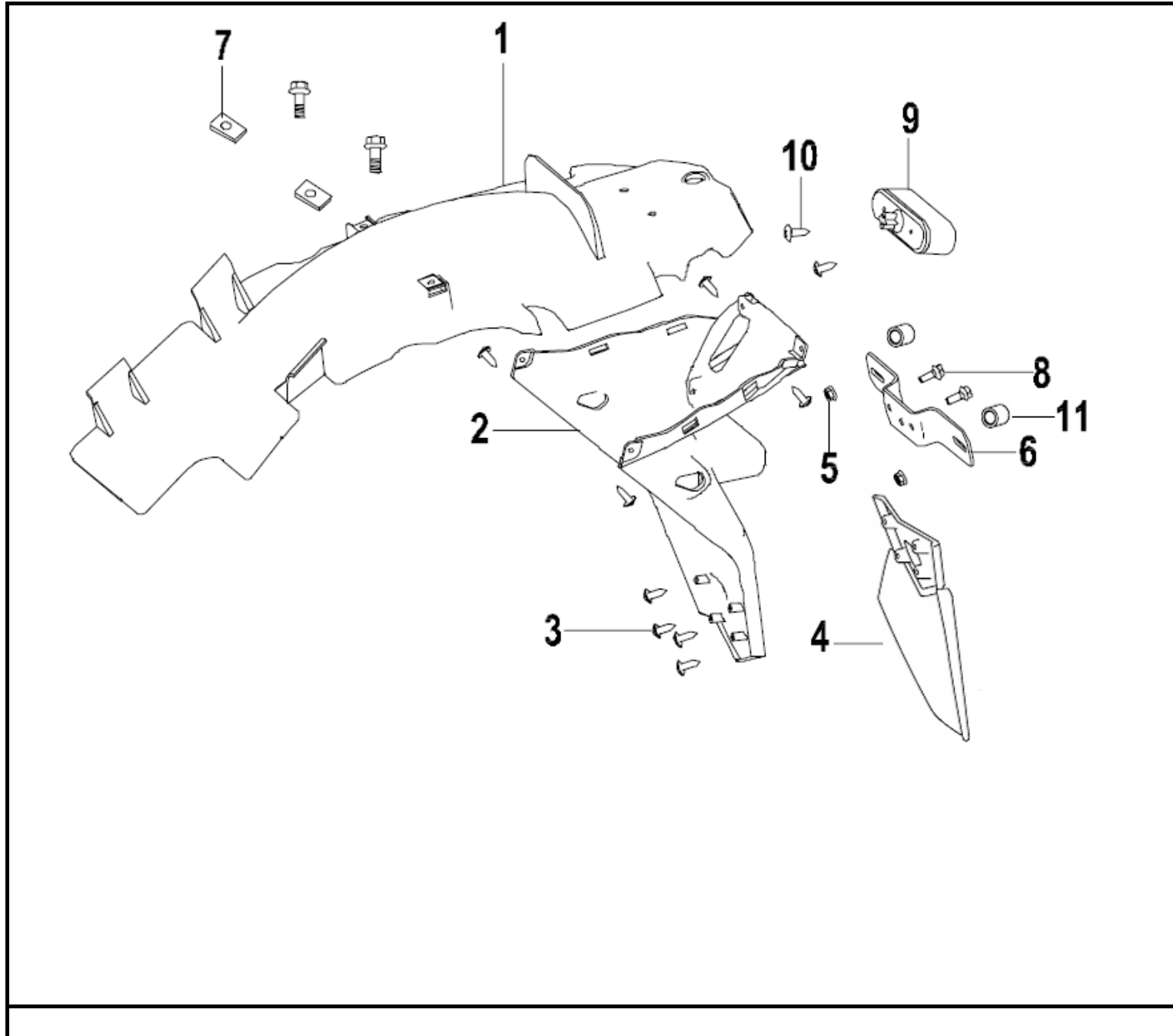






F19 后挡泥板 REAR FENDER ASSY.

QJ125-26A

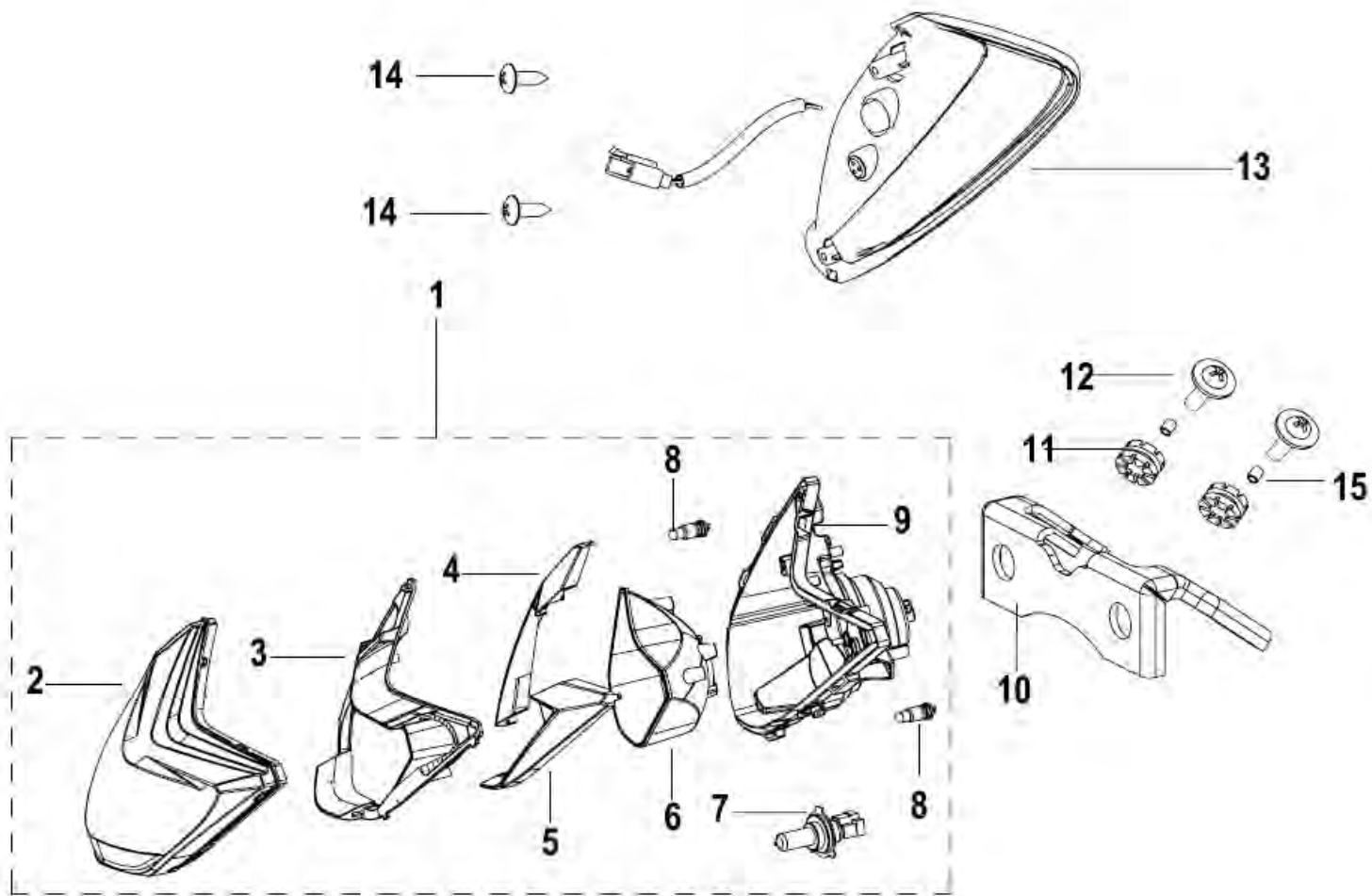




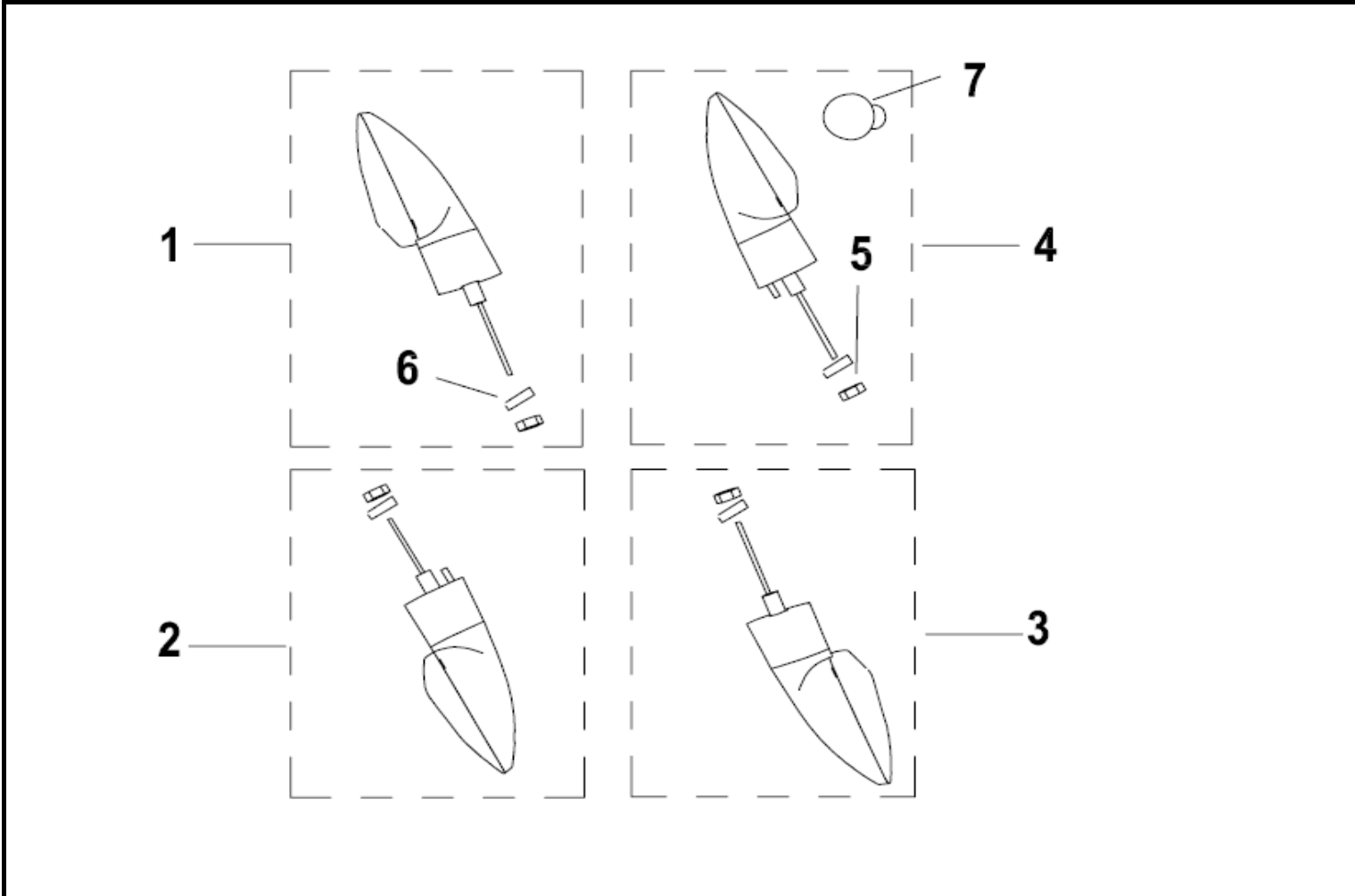




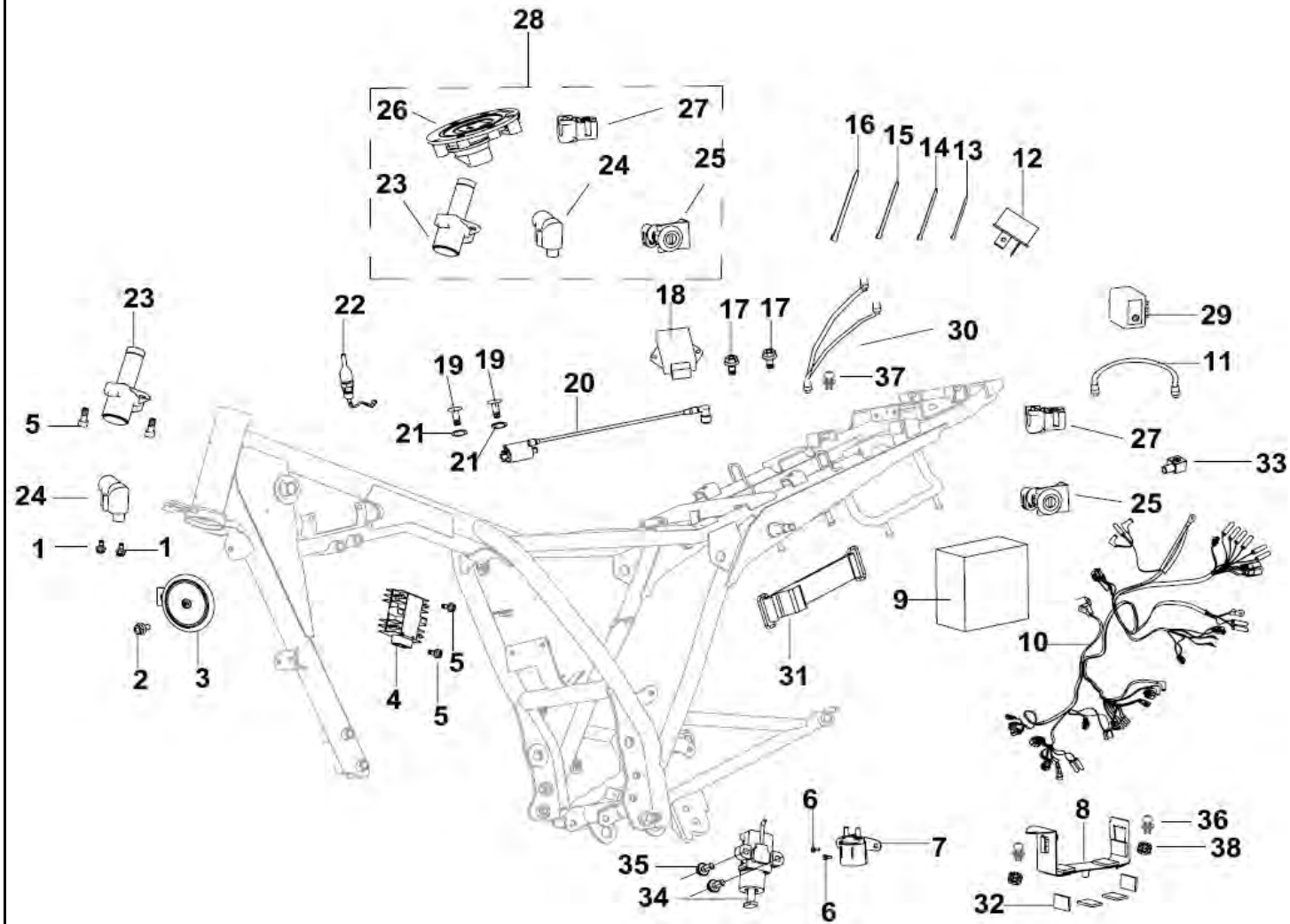
# F21 前大灯总成 HEAD LIGHT ASSY.







序号	零件编码	零件名称	数量	变更	日期	适用性	备注
NO.	Part No.	EN DESCRIPTION	QTY.	DESIGN CHANGE	DATE	APPLY	REMARK
1	81300J820000	turn signal,fr.,r.	1				
2	81100J820000	turn signal,fr.,l.	1				
3	81700J820000	turn signal,rr.,r.	1				
4	81500J820000	turn signal,rr.,l.	1				
5	B04181012553	nut M10×1.25	4				
6	B07000001003	washer 10	4				
7	B240140200F2	bulb 12V10W	1				



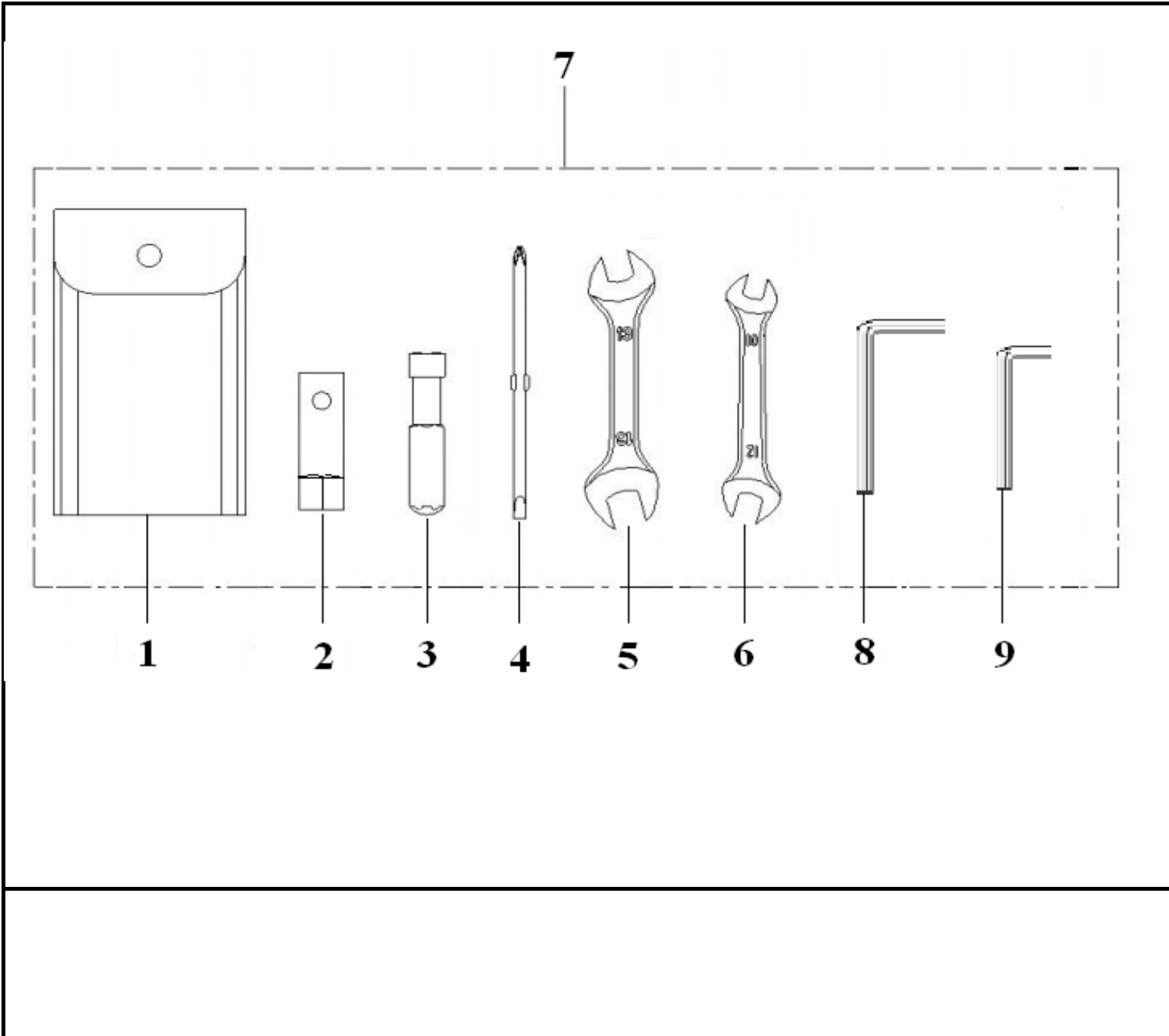
序号	零件编码	零件名称	数量	变更	日期	适用性	备注
NO.	Part No.	EN DESCRIPTION	QTY.	DESIGN CHANGE	DATE	APPLY	REMARK
1	B13040501205	screw w/washer M5×12	2				
2	B01090801665	bolt M8×16	1				
3	95100J820000	horn	1				
4	299083090010	rectifier assy.	1				
5	B01090602065	bolt M6×20	4				
6	B01090601065	bolt M6×10	2				
7	94100J000002	start-up relay	1				
8	58751J00000A	kit assy.	1				
9	96100K100010	battery 12N7-4A	1				
10	92000J830001	cable assy	1				
11	92200J000000	cable,power	1				
12	96700K060000	actuating diode	1				
13	96001J000000	clamp 150mm	6				
14	96002J000000	clamp 200mm	2				
15	96003J000000	clamp 250mm	2				
16	96004J000000	clamp 300mm	1				
17	B01090601665	bolt M6×16	2				
18	299053090000	electronic C.D.I	1				
19	B02000501225	screw M5×12	2				
20	96200J060001	coil assy.,ignition	1				
21	B07210000501	washer 5□	2				
22	91070G130000	switch,rear brake	1				
23	88100J000000	main switch assy.	1				
24	88300J000000	frame lock	1				
25	88500T030000	seat assy,lock	1				
26	88400S010000	cap comp,fuel tanik	1				
27	58800J210000	seat assy,lock	1				
28	88000J830003	lock sets	1				
29	96400K010001	flasher	1				
30	92500J400000	wire□earth	1				
31	02200J0000A0	band,attery	1				
32	58752J00000A	battery cushions	8				
33	94118B910000	pitched clematis sheath	1				
34	95800N140000	flameout switch,side stand	1				
35	B01090501664	bolt M5×16	2				
36	B13300602005	bolt w/washer M6×20	2				
37	B13170601205	bolt w/washer M6×12	1				
38	65618J820000	rubber cushion	2				





F25 随车工具 TOOL KIT ASSY.

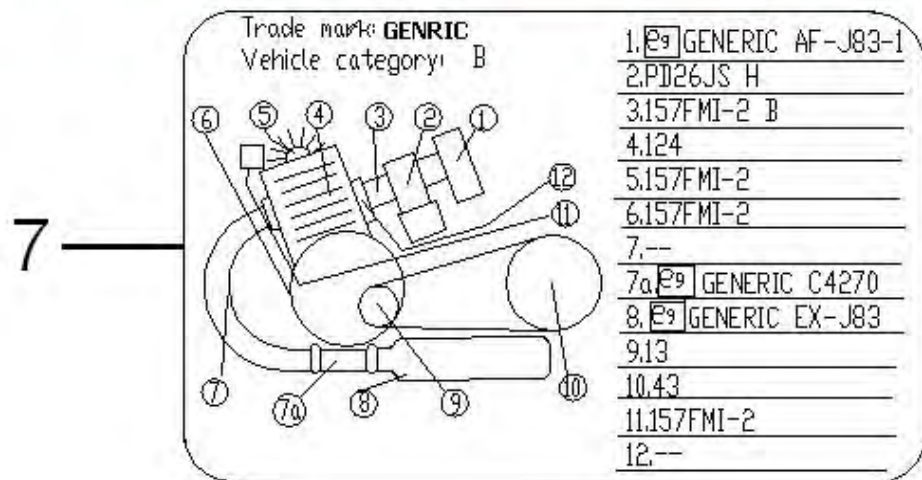
QJ125-26A



序号	零件编码	零件名称	数量	变更	日期	适用性	备注
NO.	Part No.	EN DESCRIPTION	QTY.	DESIGN CHANGE	DATE	APPLY	REMARK
1	02110J000000	tool bag	1				
2	02102G010000	socket,spark plug	1				
3	02106J000000	handle,screw driver	1				
4	02103J000000	driver,screw	1				
5	B20011001603	wrench 13-16□	1				
6	B20011001203	wrench 10-12□	1				
7	02100J830000	tool kit	1				
8	B20020600003	inner hexagonal wrench 6	1				
9	B20020400003	inner hexagonal wrench 4	1				

F26 贴花 STICKER ASSY.

OJ125-26A



序号	零件编码	零件名称	数量	变更	日期	适用性	备注
NO.	Part No.	EN DESCRIPTION	QTY.	DESIGN CHANGE	DATE	APPLY	REMARK
1	05533J83W103	sticker,bottom cover,rk in silver&v in white	2				W1、CB
2	05531J83W103	sticker,fuel tank,l.rk in silver&v in white	1				W1、CB
3	05532J83W103	sticker,fuel tank,r.rk in silver&v in white	1				
4	05533J83BH03	sticker,bottom cover,rk in black	2				
5	05531J83BH03	sticker,fuel tank,l.rk in black	1				W1、CB
6	05532J83BH03	sticker,fuel tank,r.rk in black	1				BH
7	57002J830001	label,anti-tampering	1				BH
			1				BH

□□ed.A

2010.12.14