



GENERIC

TR 125



DESIGN  AUSTRIA

Reservedele

Holtvej 8-10, Høruphav, 6470 Sydals

Telefon: +45 73 15 11 00

Fax: +45 73 15 11 01

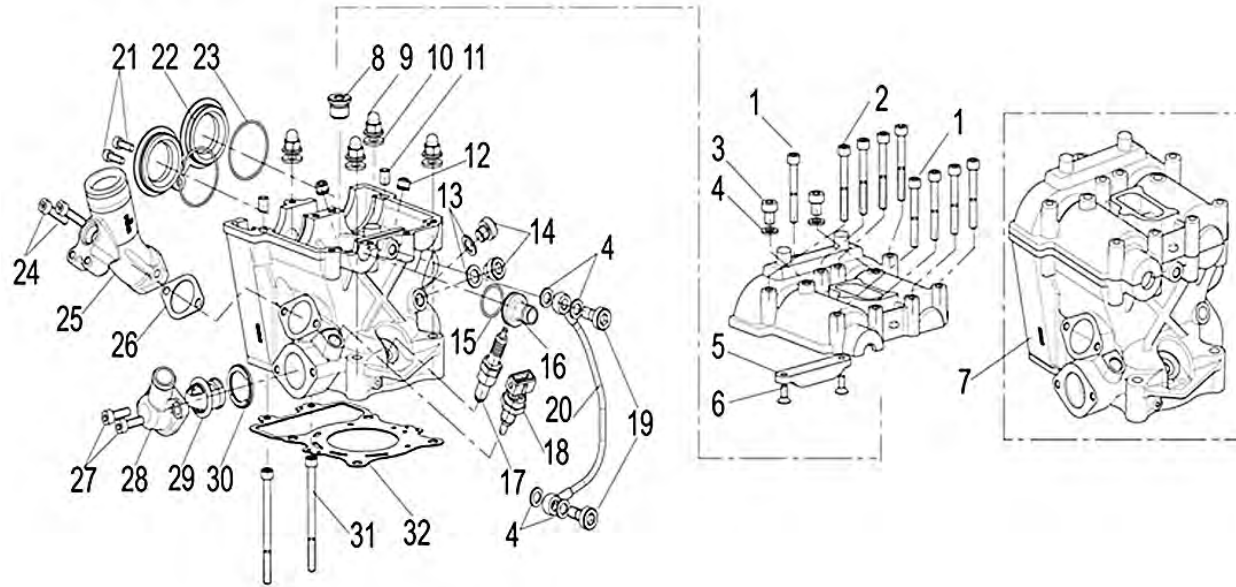
E-mail: info@scanmi.dk · www.scanmi.dk

CVR: 27 73 31 07

Maj 2013

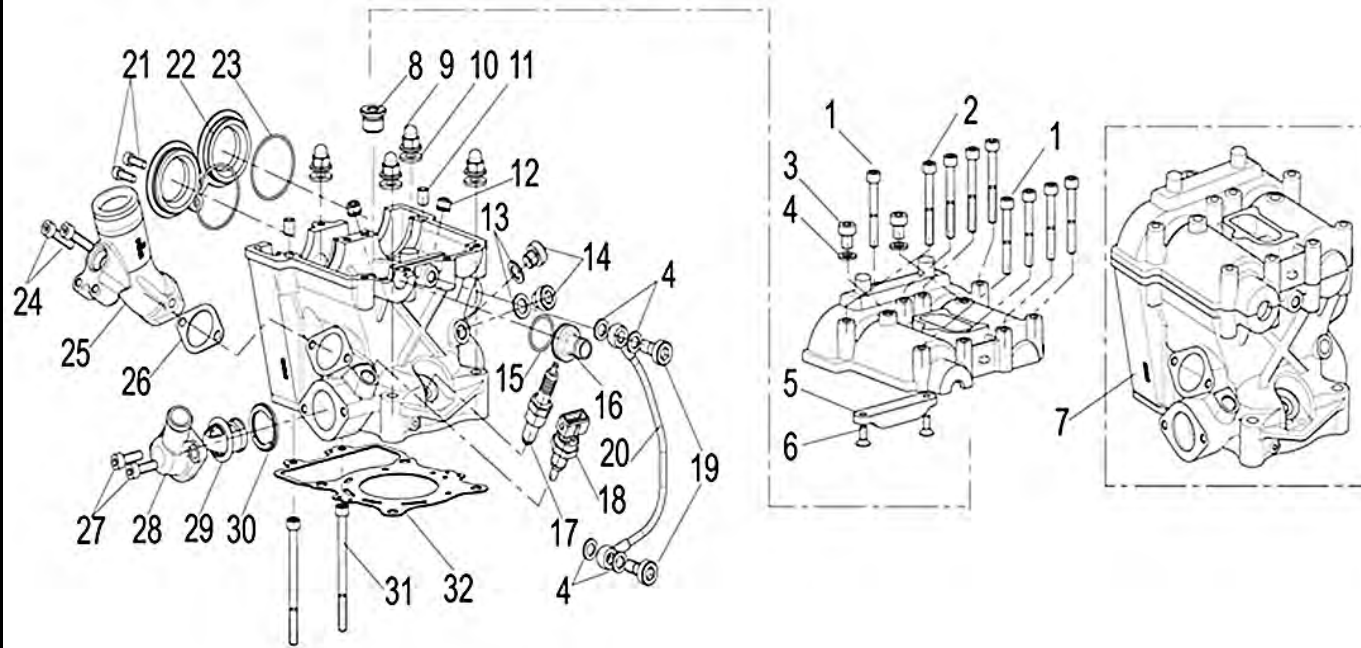


E01 CYLINDER HEAD/CYLINDER HEAD COVER ASSEMBLY (气缸盖/气缸盖罩分总成)



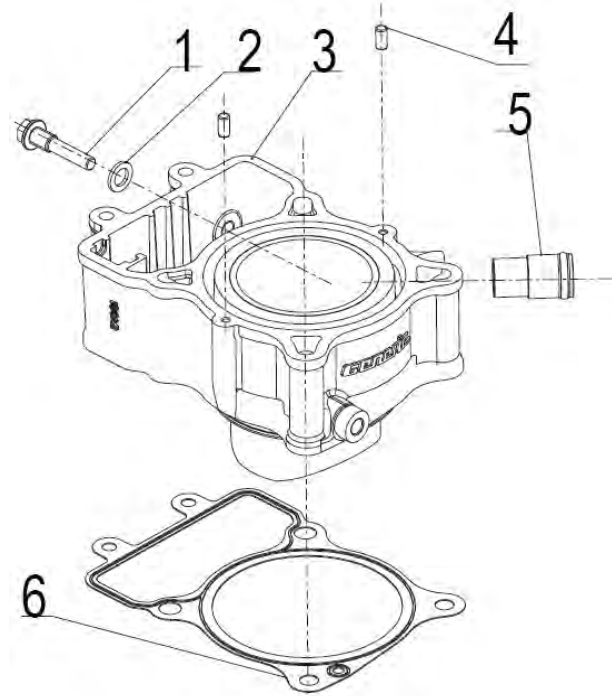
NO. 序号	PART NO. 零件号码	DESCRIPTION 零件名称	QTY 使用数量	DESIGN CHANGE INITIAL	END	DATE 日期	APPLY 适用性	REMARK 备注
1	B02050604565	INNER HEXAGON SCREW M6X45	5					
2	B02050605065	INNER HEXAGON SCREW M6X50	4					
3	100143300000	SCREW M8X10	2					
4	170116080000	WASHER 8.5X14X1.5	6					
5	140026080000	CHAIN GUIDE HOUSING	1					
6	B02170501264	SCREW M5X12	2					
7	109053300001	SHROUD, CYLINDER COVER II	1					
8	100153160000	PLUG	1					
9	12008309002X	ACORN NUT	4					change to army green,SPCFB110/12-2-13
10	120093090000	GASKET8 8.5X17X2	4					
11	150016080000	PIN Ø8X10	2					
12	120015090000	OIL SEAL,VALVE	2					
13	150043300000	WASHER 10.2X16.5X1	2					
14	150053300000	SCREW M10X10	2					
15	B190102060A0	O-RING 21.2X1.8	1					
16	120033300000	PLUG	1					
17	299073160000	SPARK PLUG CR8E	1					
18	311204180010	WATER TEMPERATURE REGULATOR	1					
19	130033300000	BOLT M8X20	2					
20	100133300000	OIL TUBE	1					
21	B02050501665	INNER HEXAGON SCREW M5X16	2					
22	120016080000	CAMSHAFT COMP	2					

E01 CYLINDER HEAD/CYLINDER HEAD COVER ASSEMBLY (气缸盖/气缸盖罩分总成)



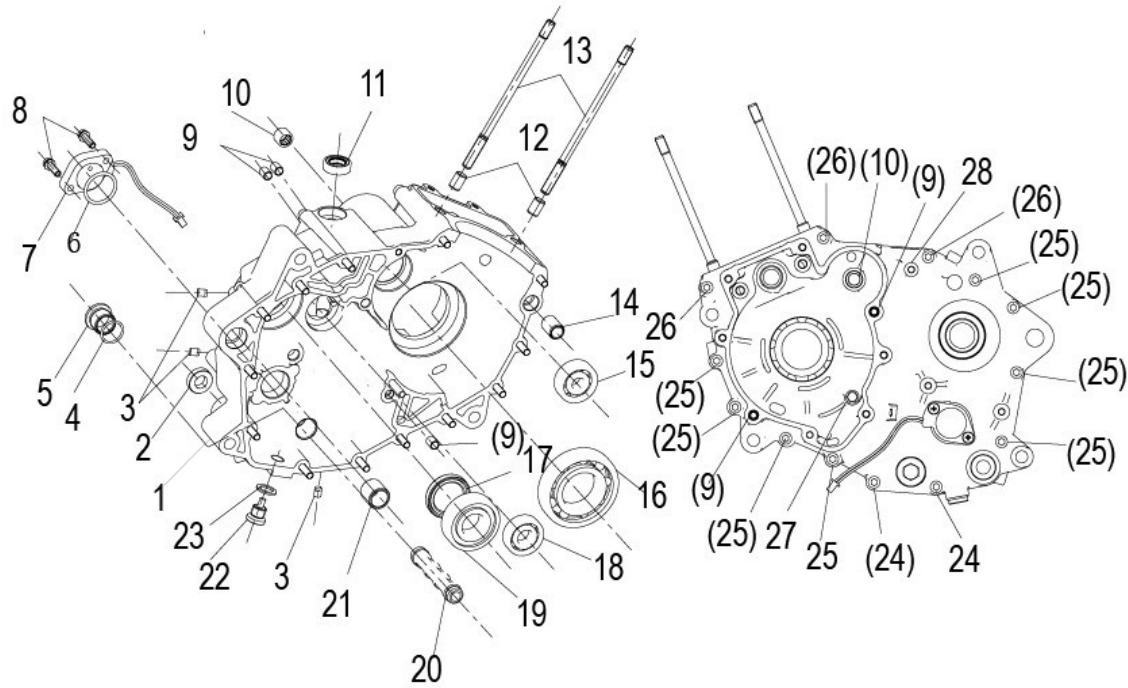
NO. 序号	PART NO. 零件号码	DESCRIPTION 零件名称	QTY 使用数量	DESIGN CHANGE		DATE 日期	APPLY 适用性	REMARK 备注
				INITIAL	END			
23	160056090000	O-RING2162 41x1.78	2					
24	B02050602565	INNER HEXAGON SCREW M6X25	2					
25	100103300000	AIR DUCT	1					
26	100123300000	AIR DUCT GASKET	1					
27	B02050602065	INNER HEXAGON SCREW M6X20	2					
28	100063300000	A THERMOSTAT COVER	1					
29	270105050000	THERMOSTAT PACKAGE	1					
30	270785050000	THERMOSTAT SEAL RING	1					
31	B02050608065	SCREW M6X80	2					
32	100023300000	CYLINDER HEAD GASKET	1					

E02 CYLINDER BLOCK ASSEMBLY 力字字字字字力



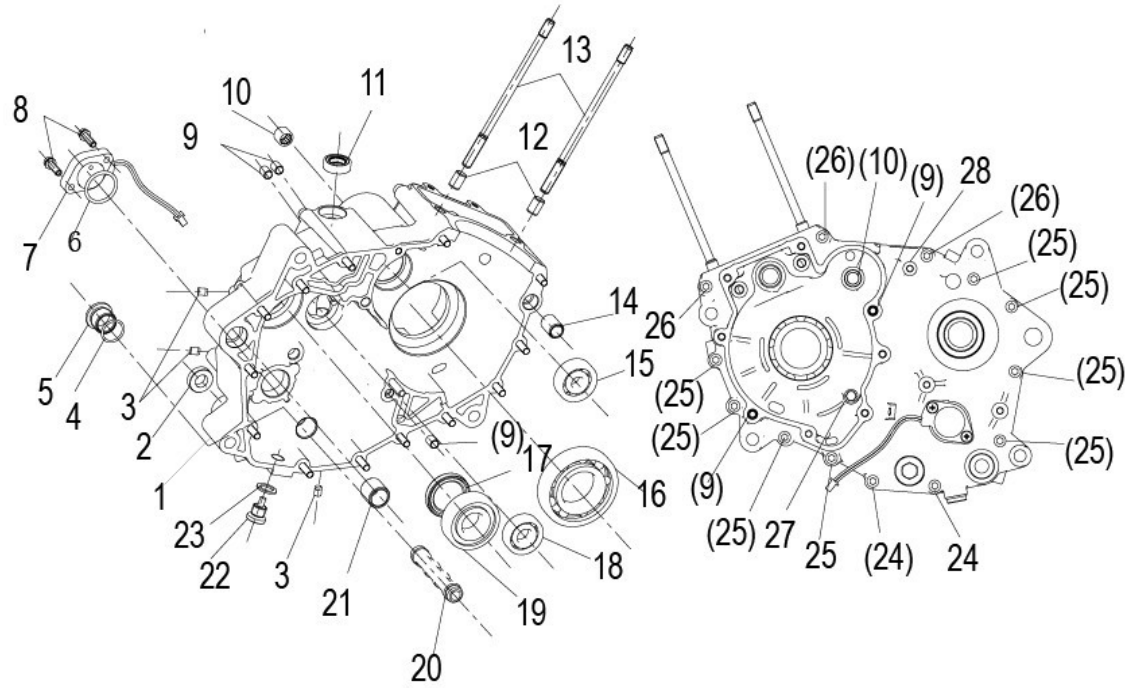
NO. 序号	PART NO. 零件号码	DESCRIPTION 零件名称	QTY 使用数量	DESIGN CHANGE		DATE 日期	APPLY 适用性	REMARK 备注
				INITIAL	END			
1	130053300000	TENSIONER SCREWS	1					
2	170116080000	TENSIONER GASKET	1					
3	139013300000	CYLINDER BLOCK ASSEMBLY	1					
4	B091403008A1	CYLINDRICALPIN	2					
5	130043300000	CINNECTING PIPE	1					
6	139023300000	CYLINDER BLOCK GASKET	1					

E03 LEFT CRANKCASE ASSEMBLY POINTS (左曲轴箱分总成)



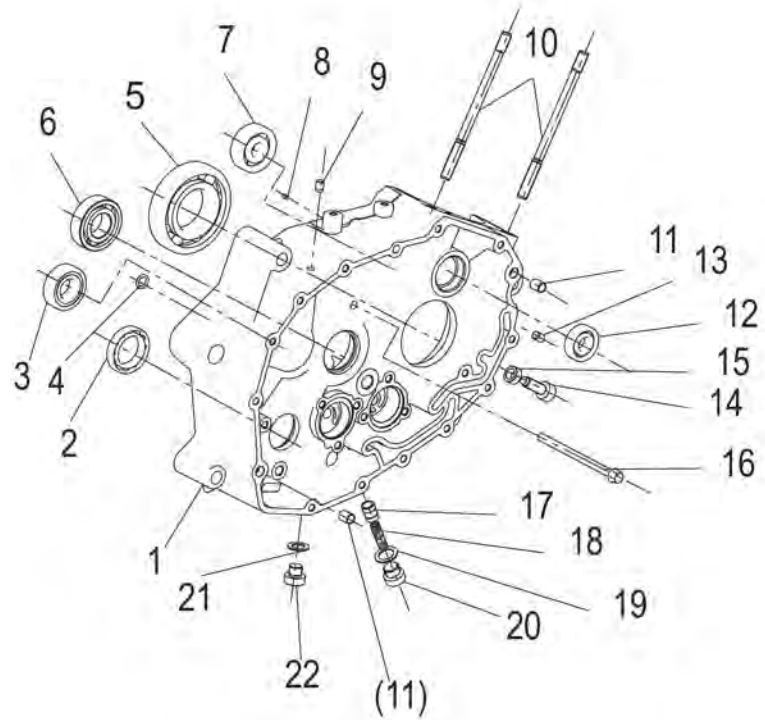
NO. 序号	PART NO. 零件号码	DESCRIPTION 零件名称	QTY 使用数量	DESIGN CHANGE INITIAL END	DATE 日期	APPLY 适用性	REMARK 备注
1	159043300000	CRANKCASE LEFT	1				
2	210496090000	OIL SEAL	1				
3	150103070000	PLUG	3				
4	B190101700A0	O RING	1				
5	150143300000	VERSCHHSS CHRAUBE DIN 908	1				
6	B190102580B0	O RING	1				
7	150196030000	STALL THE SENSOR	1				
8	B13080502005	SCREW	2				change to army green,SPCFB110/12-2-13
9	150016080000	DOWEL TUBE ENGINE SCREW	3				
10	B1212K101400	BEARINGS	1				
11	150163300000	OIL SEAL	1				
12	150083070000	DOWEL TUBE SWING ARM	2				
13	159113300000	STUD	2				
14	150123300000	DOWEL TUBE SWING ARM	1				
15	B12016030101	ROLLING BEARINGS	1				
16	170133060000	ROLLING BEARINGS	1				
17	150065150000	OIL SEAL	1				
18	B12016020203	ROLLING BEARINGS-DEEP GROOVE	1				
19	B12016622202	BEARING	1				
20	150133300000	OIL FILTER	1				
21	150113300000	DOWEL TUBE SWING ARM	1				
22	150233300000	BOLT SUCTION OIL-CANAL	1				

E03 LEFT CRANKCASE ASSEMBLY POINTS (左曲轴箱分总成)



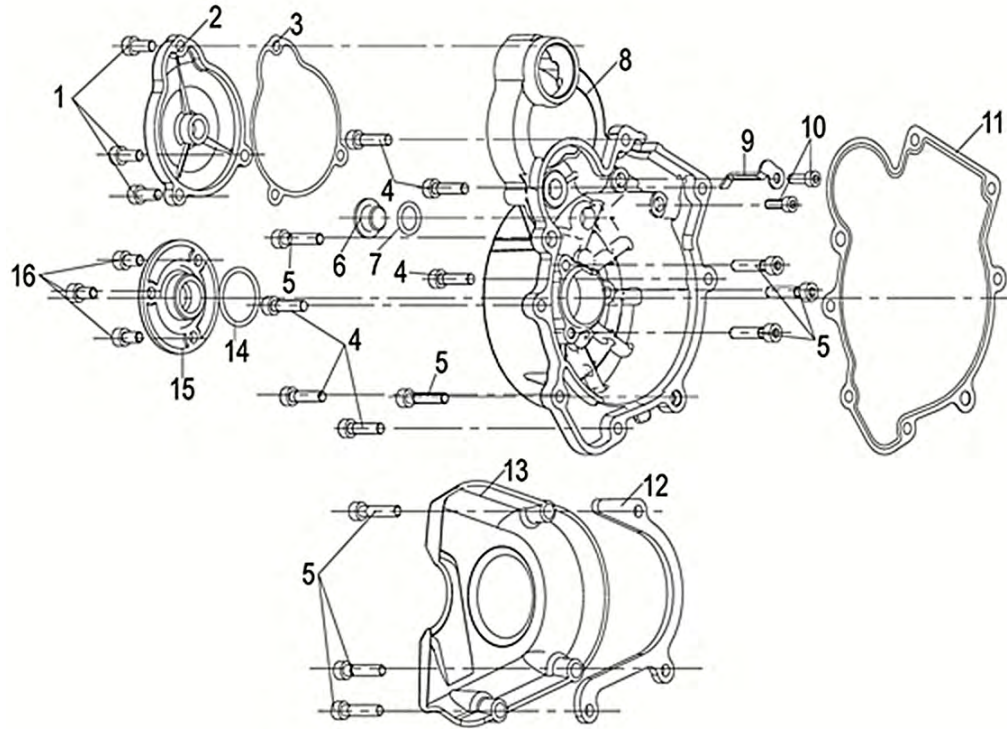
NO.	PART NO.	DESCRIPTION	QTY	DESIGN CHANGE		DATE	APPLY	REMARK
序号	零件号码	零件名称	使用数量	INITIAL	END	日期	适用性	备注
23	260126090000	GASKET 12.5x18x1.5	1					
24	B02050604565	HEXAGON SCREW	2					
25	B02050605565	HEXAGON SCREW	8					
26	B02050610065	HEXAGON SCREW	3					
27	B01070609064	BOLT	1					
28	#####	LIMIT SCREW	1					change to army green,SPCFB110/12-2-13

E04 RIGHT CRANKCASE ASSEMBLY POINTS(右曲轴箱分总成)



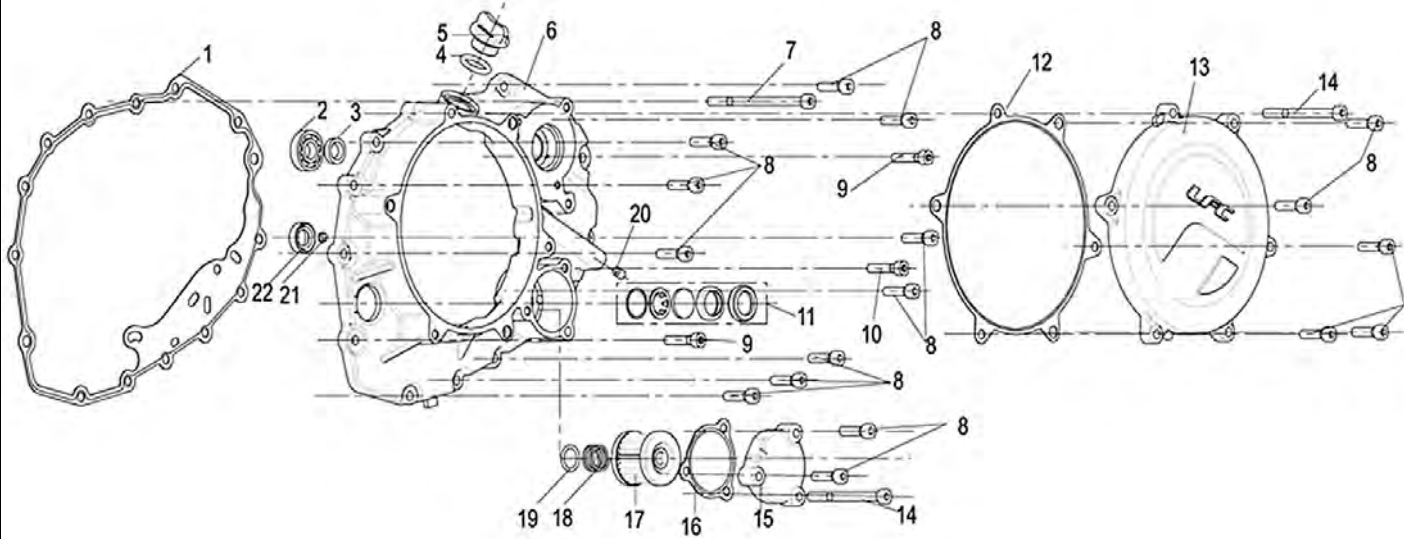
NO.	PART NO.	DESCRIPTION	QTY	DESIGN CHANGE		DATE	APPLY	REMARK
序号	零件号码	零件名称	使用数量	INITIAL	END	日期	适用性	备注
1	159053300000	CRANKCASE RIGHT	1					
2	B12016180501	BEARING	1					
3	B12016000305	BEARING	1					
4	B190100800A0	O-RING	1					
5	170133060000	ROLLING BEARINGS	1					
6	B12016000405	BEARING	1					
7	B12016030101	ROLLING BEARINGS	1					
8	150103300000	PLUG	1					
9	150103070000	PLUG	1					
10	159103300000	STUDE	2					
11	150016080000	DOWEL TUBE ENGINE SCREW	2					
12	B12016000100	ROLLING BEARINGS	1					
13	150103070000	PLUG	1					
14	150153300000	FIX-SCREW,CRANKSHAFT	1					
15	150243300000	WASHER,FIX CRANKSHAFT	1					
16	B01070609064	BOLT	1					
17	150063300000	PRESSURE REGULATING PISTON	1					
18	150073300000	SPRING,ADJUST	1					
19	240036090000	WASHER 18/12.2/1	1					
20	150093300000	BILT SUCTION OIL-CANAL	1					
21	150243300000	GASKET RING	1					
22	150053300000	BILT SUCTION OIL-CANAL	1					

E05 LEFT COVER ASSEMBLY (左盖分总成)



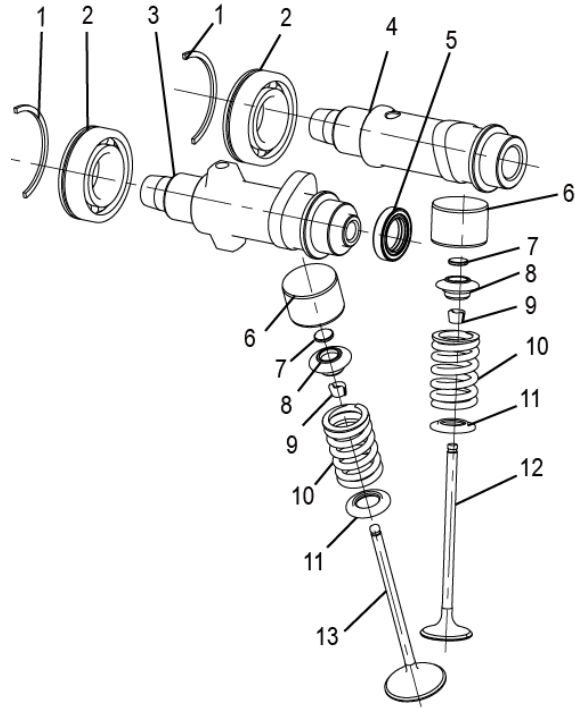
NO. 序号	PART NO. 零件号码	DESCRIPTION 零件名称	QTY 使用数量	DESIGN CHANGE		DATE 日期	APPLY 适用性	REMARK 备注
				INITIAL	END			
1	B02050601565	HEXAGON NUT WITH FLANGE	3					
2	#####	COVER,STARTER GEAR	1					
3	#####	GASKET,COVER STARTER	1					
4	B02050602565	HEXAGON NUT WITH FLANGE	6					
5	B02050603065	HEXAGON NUT WITH FLANGE	8					
6	16005307002X	PLUG SEE	1					
7	B190102800B0	O-RING	1					
8	#####	LEFT COVER	1					
9	#####	CLAMP PRESSURE	1					
10	B02050601664	SCREW M5X16	2					
11	#####	GASKET LEFT COVER	1					
12	#####	GUIDE ROLLER CHAIN PLATE	1					
13	#####	LEFT BACK COVER	1					
14	B190101380B0	O-RING	1					
15	#####	COVER,CLUTCH	1					
16	B02050601265	HEXAGON NUT WITH FLANGE	3					

E06 RIGHT COVER ASSEMBLY (右盖分总成)



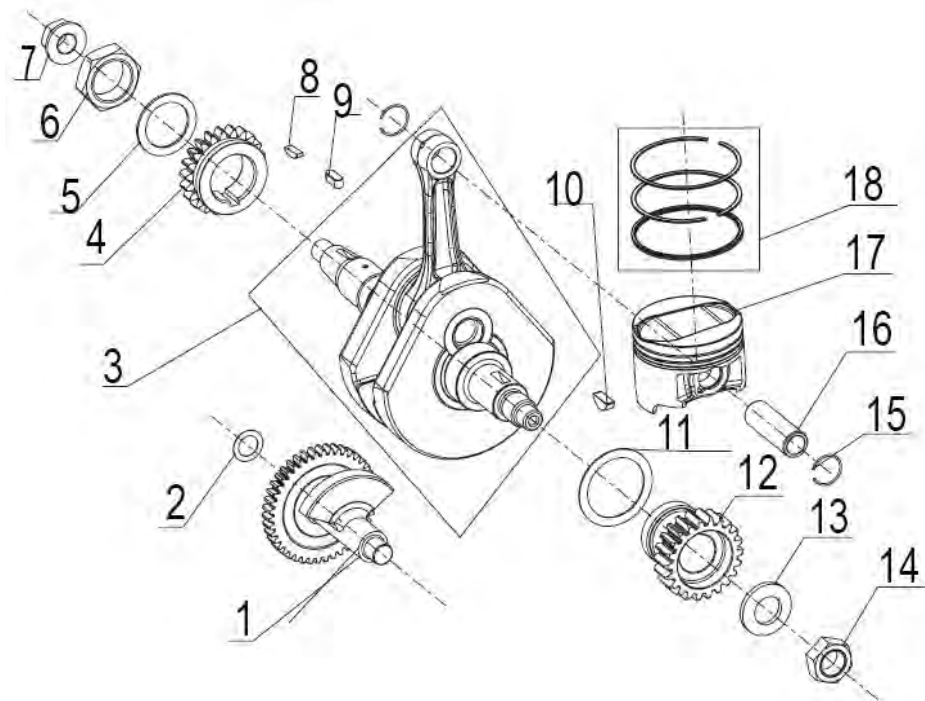
NO.	PART NO.	DESCRIPTION	QTY	DESIGN CHANGE	DATE	APPLY	REMARK
序号	零件号码	零件名称	使用数量	INITIAL	日期	适用性	备注
1	#####	RIGHT COVER GASKET	1				
2	B12016600101	BEARING	1				
3	#####	OIL SEAL	1				
4	B190101700C0	O-RING	1				
5	#####	CAPI OIL FILLER	1				
6	#####	RIGHT COVER	1				
7	B02050610065	HEXAGON NUT WITH FLANGE	1				
8	B02050602565	HEXAGON NUT WITH FLANGE	17				
9	B02050603065	HEXAGON NUT WITH FLANGE	2				
10	B02050603565	HEXAGON NUT WITH FLANGE	1				
11	#####	OIL LEVEL INDICATOR ASSY	1				
12	#####	GASKET, CLUTCH COVER	1				
13	#####	CLUTCH COVER	1				
14	B02050607565	HEXAGON NUT WITH FLANGE	2				
15	#####	OIL FILLER COVER	1				
16	#####	GASKER, OIL FILLER	1				
17	#####	OIL FILLER	1				
18	#####	SPRING	1				
19	#####	O-RING	1				
20	#####	PLUG	1				
21	#####	PLUG	1				
22	#####	OIL SEAL	1				

E07 VALVE MECHANISM SUB-ASSEMBLY (配气机构分总成)



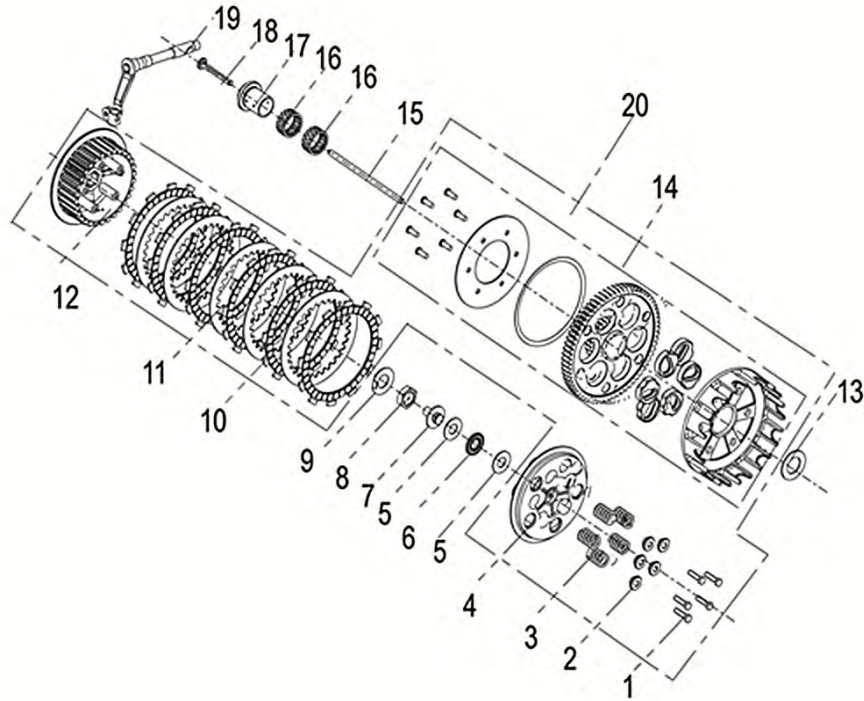
NO.	PART NO.	DESCRIPTION	QTY	DESIGN CHANGE	DATE	APPLY	REMARK
序号	零件号码	零件名称	使用数量	INITIAL	日期	适用性	备注
1	120025150000	STOP RING	2				
2	B12016602201	BEARING	2				
3	129083300000	INTAKE CAMSHAFT	1				
4	129073300000	EXHUAST CAMSHAFT	1				
5	100073300000	SEAL, VALVE	1				
6	120013300000	SCREW, ADJUSTING	2				
7	120023300000	VALVE ADJUSTING WASHER	2				
8	129333300000	INTAKE ROCKER SHAFT	2				
9	129025090000	PUNCH HEEL VALVE	4				
10	129253300000	SPRING	2				
11	129213300000	UPPER ROCKER SHAFT	2				
12	129193300000	EXHAUST CHAIN WHEEL	1				
13	129183300000	INTAKE CHAIN WHEEL	1				

E08 CRANK AND CONNECTING ROD PISTON SUB-ASSEMBLY (曲柄连杆活塞分总成)



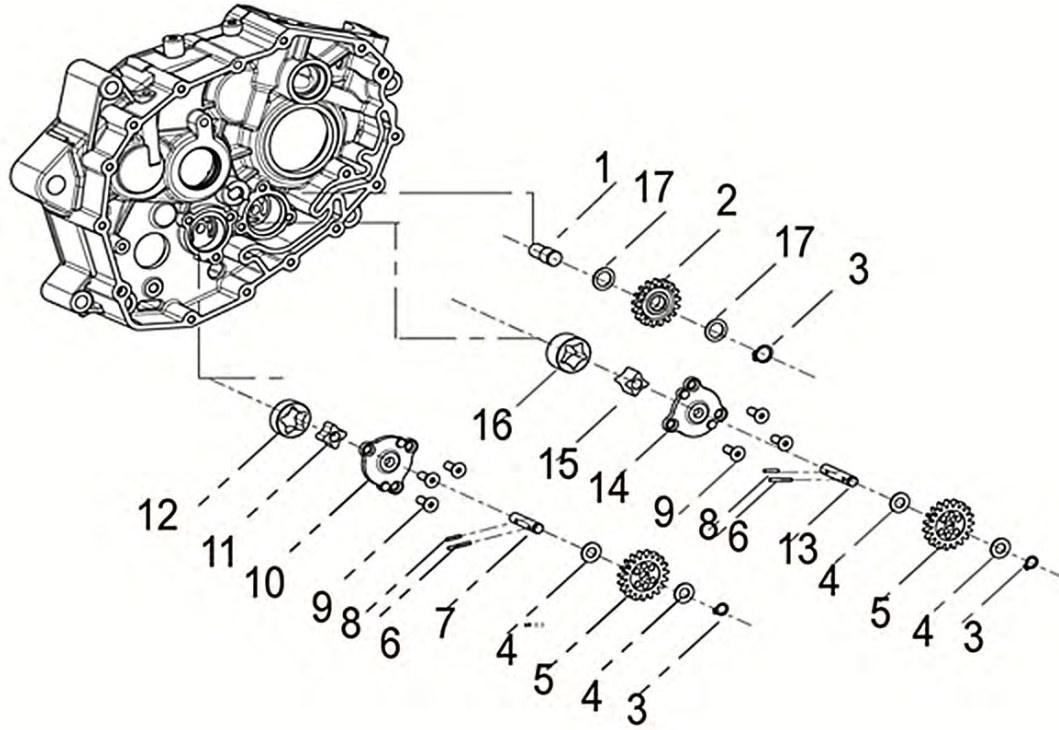
NO. 序号	PART NO. 零件号码	DESCRIPTION 零件名称	QTY 使用数量	DESIGN CHANGE		DATE 日期	APPLY 适用性	REMARK 备注
				INITIAL	END			
1	179243300000	BALANCE SHAFT ASSEMBLY	1					
2	170173300000	BALANCE SHAFT SHIMS	1					
3	179013300010	PISTON COMPONENT	1					
4	170053300000	MOTOR GEAR	1					
5	170103300000	WASHER	1					
6	170113300000	CRANKSHAFT NUT M26X1.5-H	1					
7	270023050000	HEXAGON FLANGE NUTS M12X1.25	1					
8	260023050000	WOODRUFF KEY	1					
9	B11120505014	FLAT KEY 5X5X14	1					
10	B11810050016	KEY 5X6.5X16	1					
11	170133300000	SHIMS	1					
12	170073300000	CLUTCH DRIVE GEAR	1					
13	170083300000	BUTTERFLY RING	1					
14	170013090000	NUT	1					
15	179153070000	CIRCLIP	2					
16	179143300000	PIN,PISTON	1					
17	179133300000	PISTON	1					
18	170213300000	PISTON RING COMPONENT	1					

E09 CLUTCH SYSTEM(离合器分总成)



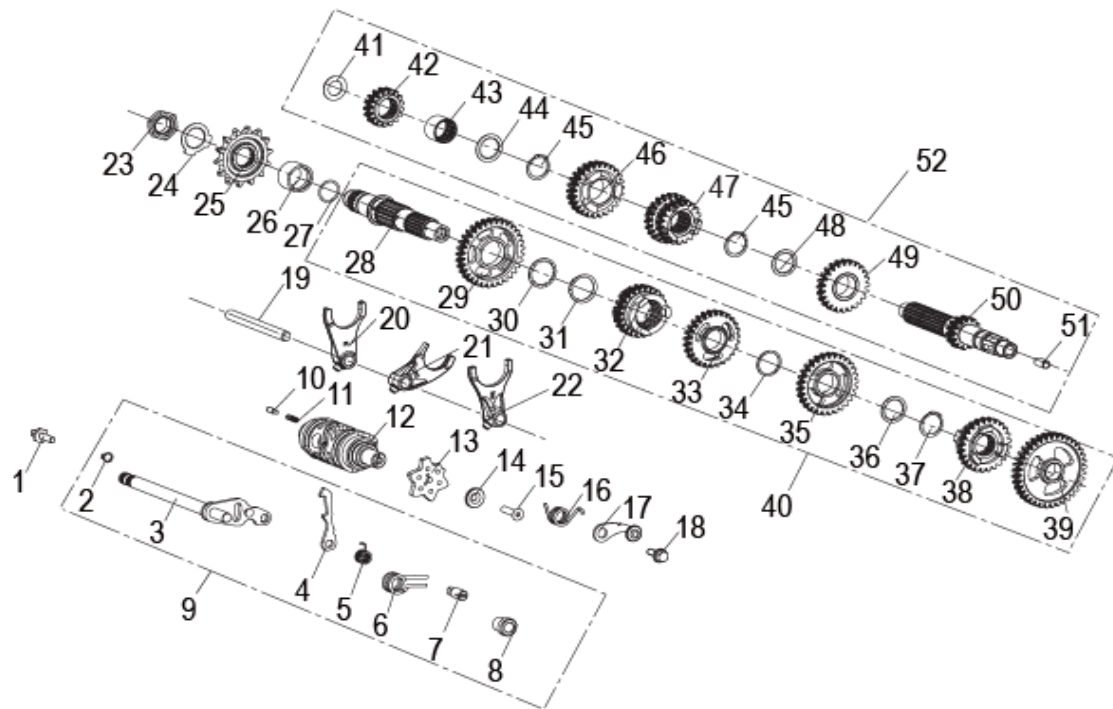
NO.	PART NO.	DESCRIPTION	QTY	DESIGN CHANGE	DATE	APPLY	REMARK
序号	零件号码	零件名称	使用数量	INITIAL	日期	适用性	备注
1	B01030502065	BOLT	5				
2	200123300000	GROWER WASHER	5				
3	#####	CLUTCH SPRING	5				
4	#####	PRESSURE DISH	1				
5	#####	BEARING WASHER	2				
6	#####	PLANE NEEDLE BEARING	1				
7	#####	DETACHED SPINDLE SLEEVE	1				
8	#####	LOCKNUT	1				
9	#####	MOUNTINGLOCK WASHER	1				
10	#####	FRICITION PLATE ASSEMBLY	6				
11	#####	DRIVEN SHEET	5				
12	#####	CLUTCH DRIVEN HUB	1				
13	#####	THRUSTWASHER	1				
14	#####	CLUTCHINITIAIVE HUB ASSEMBLY	1				
15	#####	INNER DETACHED MANDRIL II	1				
16	#####	NEEDLE BEARING	2				
17	#####	BUSH	1				
18	#####	INNER DETACHED MANDRILd I	1				
19	#####	DETACHED MANDRIL WELD ASSE	1				
20	9013300010	CLUTCH ASSEMBLY	1				

E10 LUBRICATE SYSTEM (润滑系统分总成)



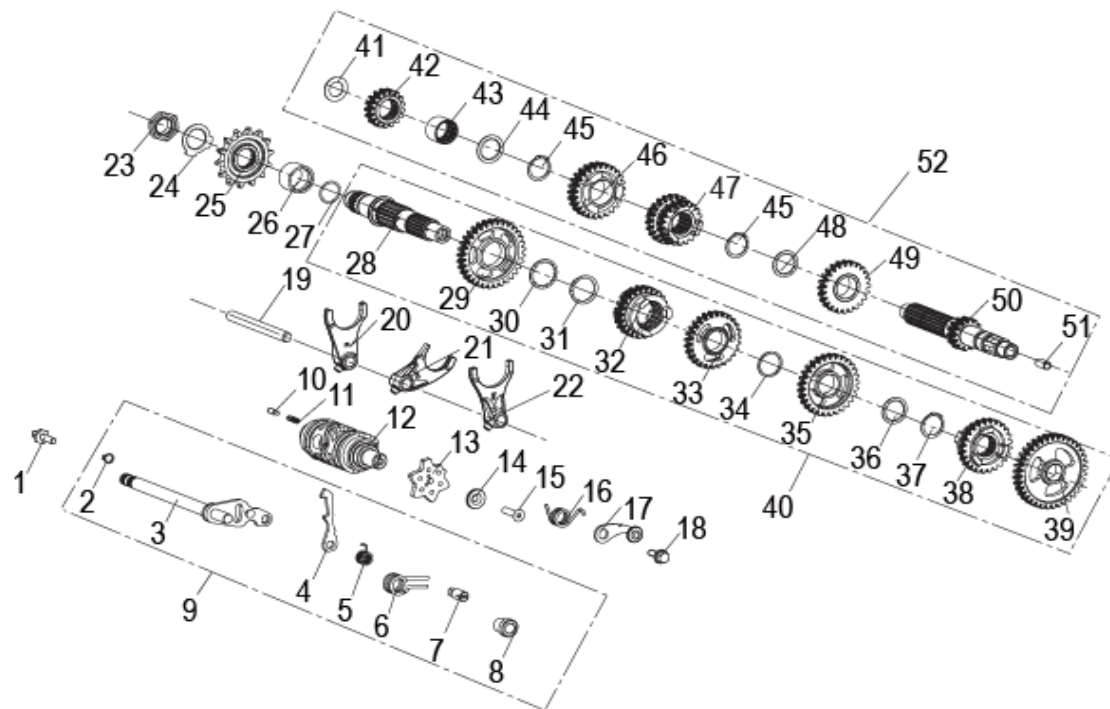
NO.	PART NO.	DESCRIPTION	QTY	DESIGN CHANGE		DATE	APPLY	REMARK
序号	零件号码	零件名称	使用数量	INITIAL	END	日期	适用性	备注
1	260103300000	DRIVEN GEAR SHAFT	1					
2	260113300000	DRIVEN GEAR	1					
3	B08010000804	RETAINER RING	3					
4	260053300000	WASHER	2					
5	269063300000	PUMP GEAR	2					
6	260073300000	FIXED PIN	2					
7	260033300000	OIL-ABSORBING PUMP SHAFT	1					
8	B09012501214	PIN	2					
9	B02170601664	BOLT	6					
10	269103300000	OIL PUMP COVER	1					
11	260023300000	INNER ROTOR	1					
12	260043300000	OUTER ROTOR	1					
13	260093300000	OIL-PRESSURE PUMP SHAFT	1					
14	269103300001	OIL PUMP COVER	1					
15	260023090000	INNER ROTOR	1					
16	260033090000	OUTER ROTOR	1					
17	260133300000	GASKET	2					

E11 GEAR SHIFT MECHANISM ASSEMBLY (变速换档机构分总成)



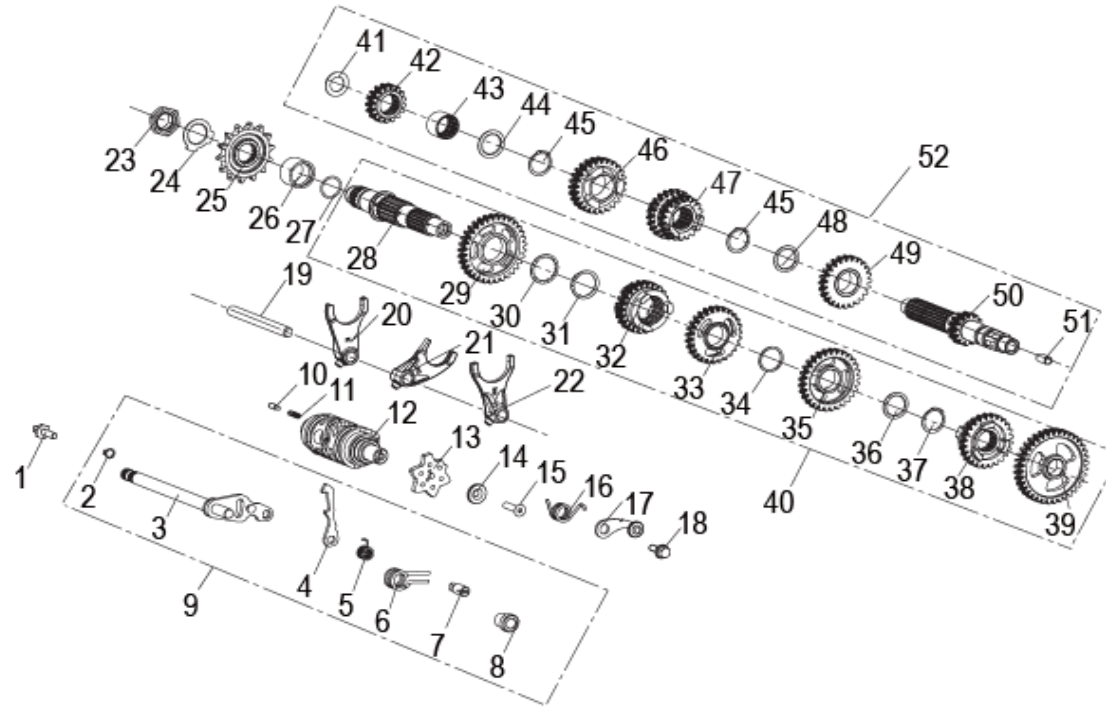
NO.	PART NO.	DESCRIPTION	QTY	DESIGN CHANGE	DATE	APPLY	REMARK
序号	零件号码	零件名称	使用数量	INITIAL	日期	适用性	备注
1	#####	PIN,INDEX LEVER	1				
2	B08010000804	CIRCLIP	1				
3	#####	SHIFT GEARS,AXIS,ASSEMBLED	1				
4	#####	GEARS SHIFTER	1				
5	#####	ROTATIONAL,SPRING	1				
6	#####	RETURN SPRING	1				
7	#####	BOLT FOE INDEX LEVER	1				
8	#####	PLASTIC,SHEATH	1				
9	#####	GEARLEVER,SUBASSEMBLY	1				
10	#####	ANTENNA	1				
11	#####	SPRING	1				
12	#####	CAM,GEAR SHIFT	1				
13	#####	SHIFT GEARS,LOCALIZER	1				
14	#####	WASHER	1				
15	B02850602563	BOLT M6X25	1				
16	#####	RETURN SPRING	1				
17	#####	STAR-	1				
18	#####	SHIFT STOPPER ARM AXLE	1				
19	#####	SHAFT,SHIFT FORK	1				
20	#####	FORK III	1				
21	#####	FORK II	1				
22	#####	FORK I	1				

E11 GEAR SHIFT MECHANISM ASSEMBLY (变速换挡机构分总成)



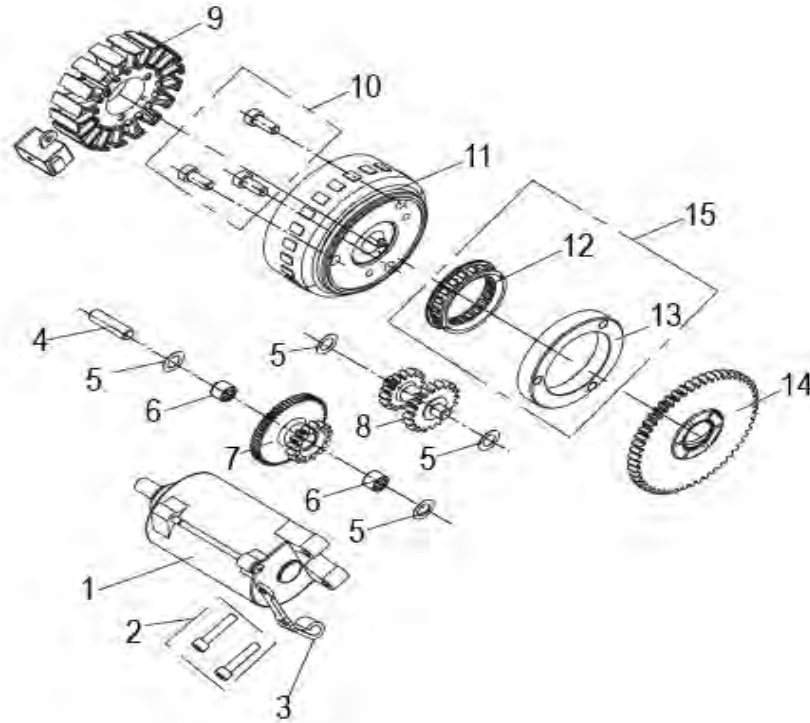
NO. 序号	PART NO. 零件号码	DESCRIPTION 零件名称	QTY 使用数量	DESIGN CHANGE INITIAL	END	DATE 日期	APPLY 适用性	REMARK 备注
23	#####	NUT	1					
24	#####	SPLINE WASHER	1					
25	#####	SPROCKET	1					
26	#####	EXPORT SPROKET,SHEATH	1					
27	B190101900AO	O RINGφ19×φ1.8	1					
28	#####	SHAFTDRIVEN	1					
29	#####	GEAR,2ND DRIVEN	1					
30	#####	SPLINE WASHER	1					
31	#####	CIRCILP	1					
32	#####	GEAR,6TH DRIVEN	1					
33	#####	GEAR,4TH DRIVEN	1					
34	#####	WASHER	1					
35	#####	GEAR,3RD DRIVEN	1					
36	#####	SPLINE WASHER	1					
37	#####	CIRCILP	1					
38	#####	GEAR,5TH DRIVEN	1					
39	#####	COUNTERSHAFT GEAR1 ASSY	1					
40	#####	DRIVER SHAFT ASSY	1					
41	#####	WASHER,THRUST	1					
42	#####	GEAR,2ND DRIVE	1					
43	#####	SPLINE,SHEATH	1					
44	#####	SPLINE WASHER	1					

E11 GEAR SHIFT MECHANISM ASSEMBLY (变速换档机构分总成)



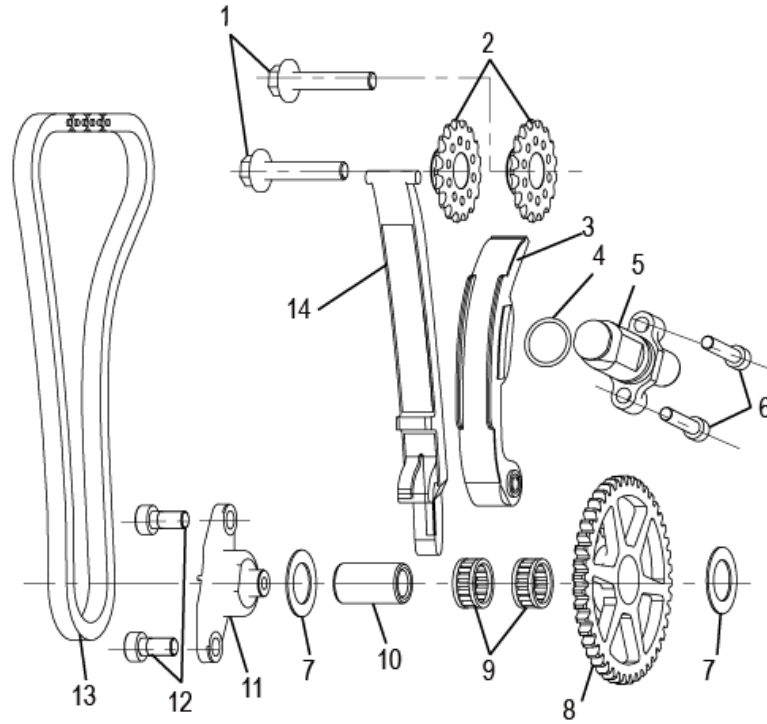
NO.	PART NO.	DESCRIPTION	QTY	DESIGN CHANGE	DATE	APPLY	REMARK
序号	零件号码	零件名称	使用数量	INITIAL	日期	适用性	备注
45	#####	CIRCILP	2				
46	#####	GEAR,6TH DRIVE	1				
47	#####	GEAR,3RD/4TH DRIVE	1				
48	#####	SPLINE WASHER	1				
49	#####	GEAR,5TH DRIVE	1				
50	#####	SHAFT COUNTER	1				
51	#####	PRINCIPAL AXIS,BUSHING	1				
52	#####	COUNTER SHAFT ASSY	1				

E12 ELECTRIC STARTER ASSY(电启动分总成)



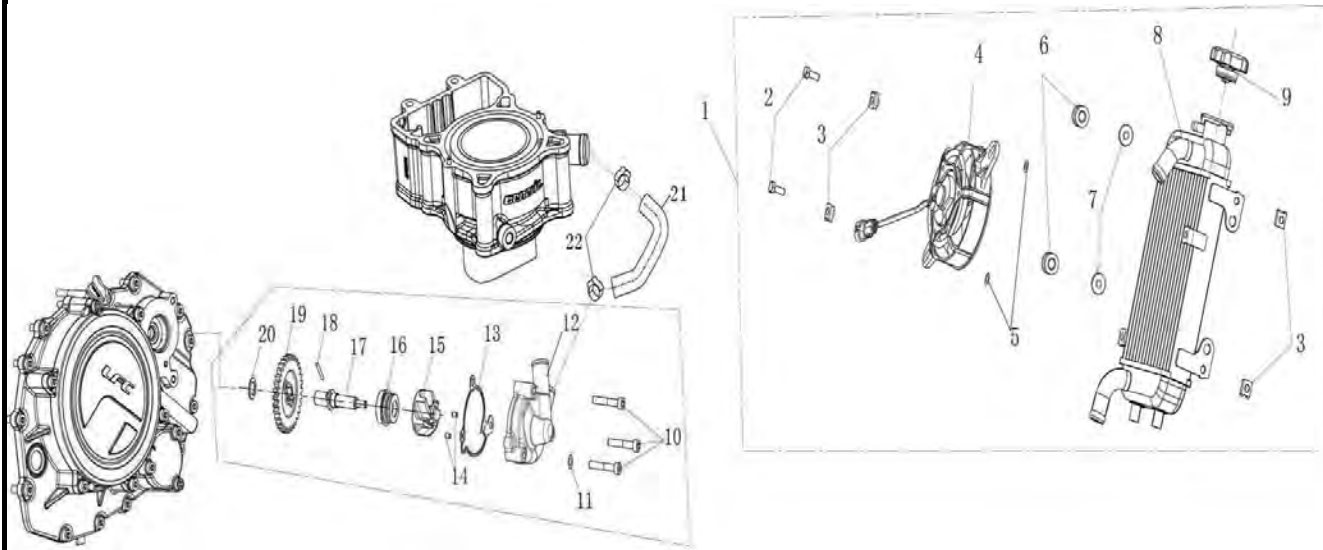
NO.	PART NO.	DESCRIPTION	QTY	DESIGN CHANGE	DATE	APPLY	REMARK
序号	零件号码	零件名称	使用数量	INITIAL	日期	适用性	备注
1	24900330001X	MOTOR ASSEMBLY,STARTING	1				
2	B02050603065	SCREW M6x30	2				
3	#####	CLUTCH CABLE FIXING PLATE	1				
4	#####	ELECTRIC STARTING GEAR SHAFTT	1				
5	#####	WASHER	4				
6	B1212K101001	NEEDLE BEARING	2				
7	#####	ELECTRIC STARTING GEAR	1				
8	#####	GEAR,STARTER IDLER	1				
9	#####	COIL ASSY	1				
10	#####	SCREW M8x18	3				
11	#####	FLY WHEEL ASSY	1				
12	#####	STARTER CLUTCH	1				
13	#####	OUTER RING STARTER CLUTCH	1				
14	#####	BIG GEAR COMP,starting	1				
15	#####	STARTER OVERRUNNING CLUTCH	1				

E13 STRAINER UNIT ASSEMBLY (正时传动机构分总成)



NO. 序号	PART NO. 零件号码	DESCRIPTION 零件名称	QTY 使用数量	DESIGN CHANGE		DATE 日期	APPLY 适用性	REMARK 备注
				INITIAL	END			
1	270036080000	BOLT	2					
2	260236080000	CAMSHAFT GEAR	2					
3	140013300000	TENSIONOR GUAID	1					
4	140106090000	O-RING 18.77X1.78	1					
5	149036090000	TENSIONOR	1					
6	B02050603065	BOLT M6X30	2					
7	220026080000	GASKET	2					
8	120026080000	DOUBLE GEAR	1					
9	240096080000	NEEDLE CAGE	2					
10	140063300000	intermediate pin	1					
11	140053300000	DOUBLE GEAR FLANGE	1					
12	B02050801663	BOLT M8X16	2					
13	140033300000	CHAIN	1					
14	140023300000	FIX GUAID	1					

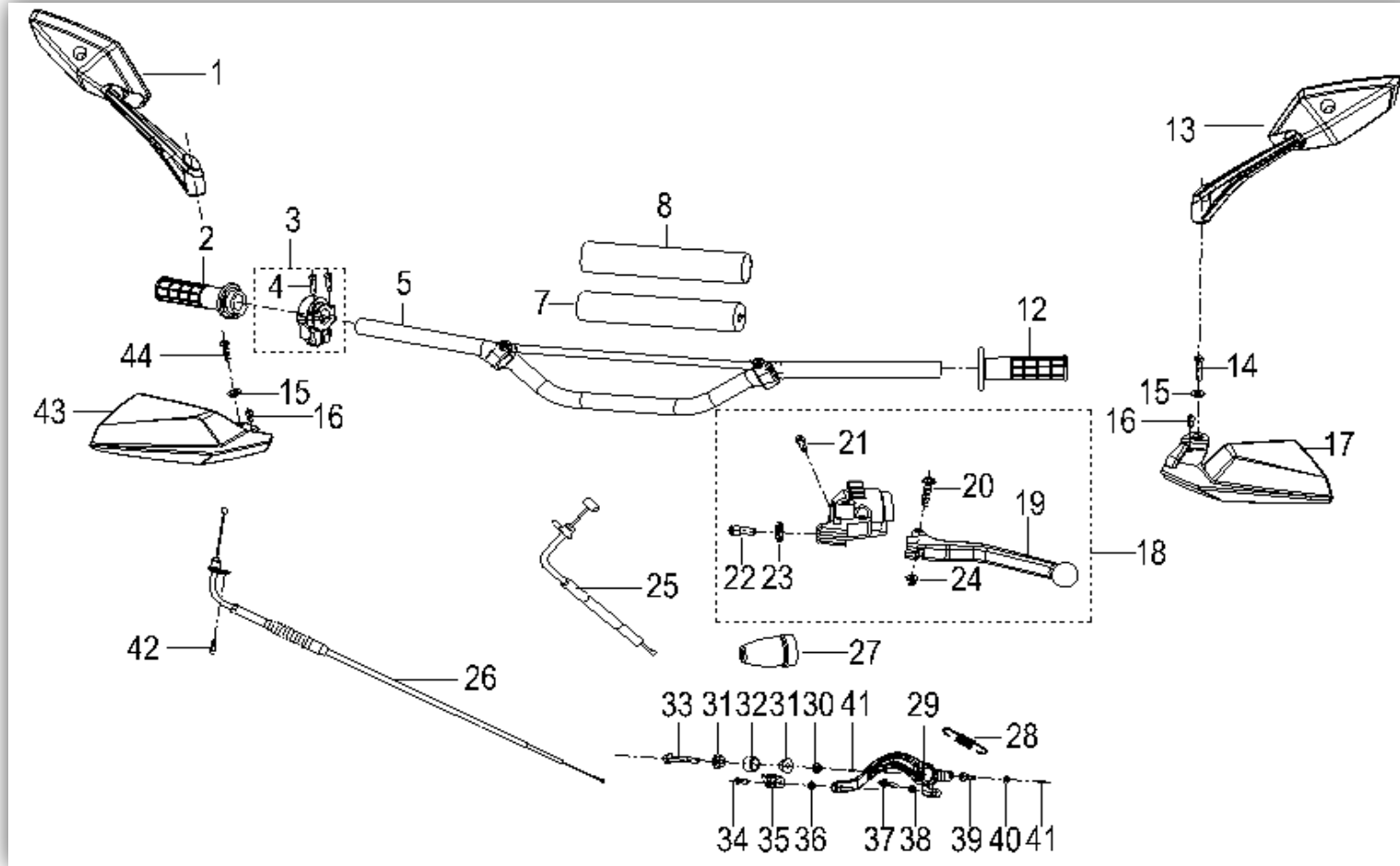
E14 COOLING SYSTEM (冷却系统分总成)



NO. 序号	PART NO. 零件号码	DESCRIPTION 零件名称	QTY 使用数量	DESIGN CHANGE INITIAL END	DATE 日期	APPLY 适用性	REMARK 备注
1	#####	RADIATOR FAN ASSY	1				belong to body parts
2	B01010601663	HEXAGON BOLT M6×16	2				belong to body parts
3	#####	MOUNTING CLAMP	4				belong to body parts
4	#####	FAN ASSY	1				belong to body parts
5	#####	BACKUP PLATE	2				belong to body parts
6	#####	BUSH	2				belong to body parts
7	#####	BUFFER SET	2				belong to body parts
8	#####	TANK WELDING COMPONENT	1				belong to body parts
9	#####	FILLER CAP	1				belong to body parts
10	B02050603565	HEXAGON SCREW	3				belong to body parts
11	#####	WASHER	1				
12	#####	WATER PUMP COVER	1				
13	#####	SMALL SEAL WASHER	1				
14	B091404006B0	PIN	2				
15	#####	IMPELLER	1				
16	#####	WATER SEAL ASSY	1				
17	#####	WATER PUMP SHAFT	1				
18	B090103022B0	PIN 3×22	1				
19	#####	GEAR PUMP	1				
20	#####	WASHER 12×18×1	1				
21	#####	INLET II	1				
22	#####	CLAMP	2				

F01 操纵 CONTROL ASSY.

QJ125GY-16A



NO.	Part No.	CN DESCRIPTION	EN DESCRIPTION	QTY.	DESIGN CHANGE	DATE	APPLY	REMARK
F01-1	40480D010000	操纵器右握把总成	mirror assy.,rr. view,r.	1				
F01-2	40210J690000	操纵器右握把总成	right grip assy.	1				
F01-3	40320J690000	操纵器油门线安装板	mounting plate,throttle cable	1				
F01-4	B02050502065	操纵器油门线安装板 M5×20	screw M5×20	2				
F01-5	40101D010001	操纵器油门线	handlerbar	1				supplied from Taiwan
F01-6	40042D010000	操纵器油门线保护杆安装板	protective rod mounting-plate comp r	4				couldn't supplied by separate.
F01-7	40005D010000	操纵器油门线海绵塞	sponge plug	1				

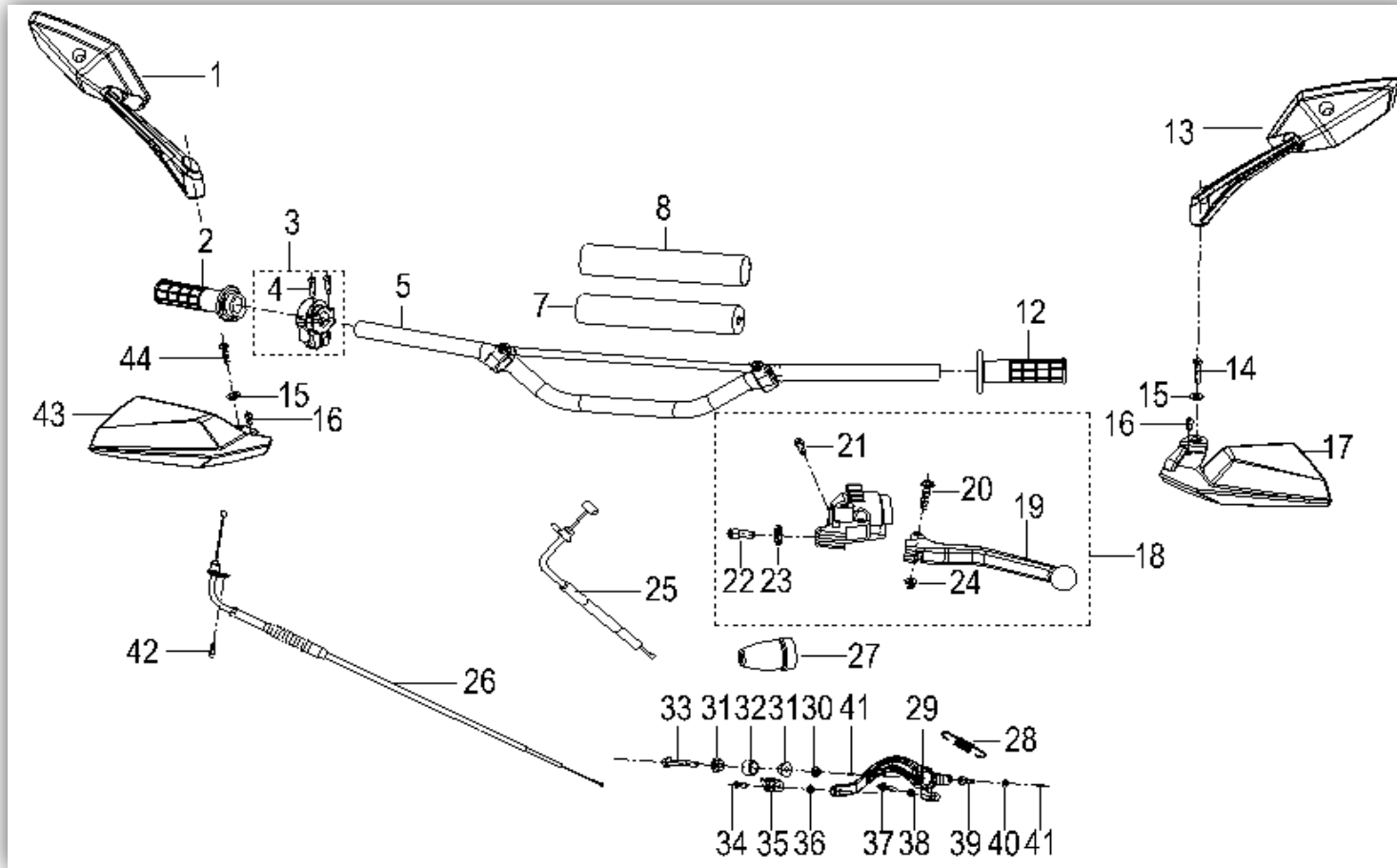
JCK (Q48-01) -QJ125GY-16A (欧III) -1A

C2330001CR00

F01-8	40901D010000	□□□□	protective jacket	1			
F01-9	B02050602065	□□□□□□M6×20	screw M6×20	2			couldn't supplied by separate.
F01-10	40043D010000	□□□□	protective rod	4			couldn't supplied by separate.
F01-11	40041D010000	□□□□□□□□	l.mounting seat,protective rod	4			couldn't supplied by separate.
F01-12	40001P010000	□□□□□□	left grip assy.	1			
F01-13	40450D010000	□□□□□□□□	mirror assy.,rr. view,l	1			
F01-14	B02050802565	□□□□□□M8×25	screw M8×25	1			
F01-15	B07000000805	□□□□□8	washer 8	2			
F01-16	B02050501265	□□□□□□M5×12	screw M5×12	2			
F01-17	65003D01BH00	把手左护套(BH)	jacket,handle l black bh	1			
F01-18	40080J690000	□□□□□□	left grip assy.	1			
F01-19	40084D010000	□□□□	left lever.	1			
F01-20	B02090602525	□□M6×25	screw M6×25	1			
F01-21	B02050502565	□□□□□□M5×25	screw M5×25	1			
F01-22	40086K010000	□□□□□	screw,adjusting	1			
F01-23	40087K010000	□□□□□	nut,adjusting	1			
F01-24	B04000600055	□□M6	nut M6	1			
F01-25	40400J690000	□□□□□□□□	clutch wire assy.	1			
F01-26	40300J690000	□□□□□□	cable assy.,throttle	1			
F01-27	40017D010000	□□□□□□□□	rubber guard,clutch cable	1			
F01-28	58222J410000	□□□□□□	spring footrest front	1			
F01-29	40714J690000	□□□□	connecting plate	1			
F01-30	B04080800055	□□□□□M8	nut M8	1			
F01-31	40705J690000	□□	bush	2			
F01-32	40713J690000	□□	tube	1			

F01 操纵 CONTROL ASSY.

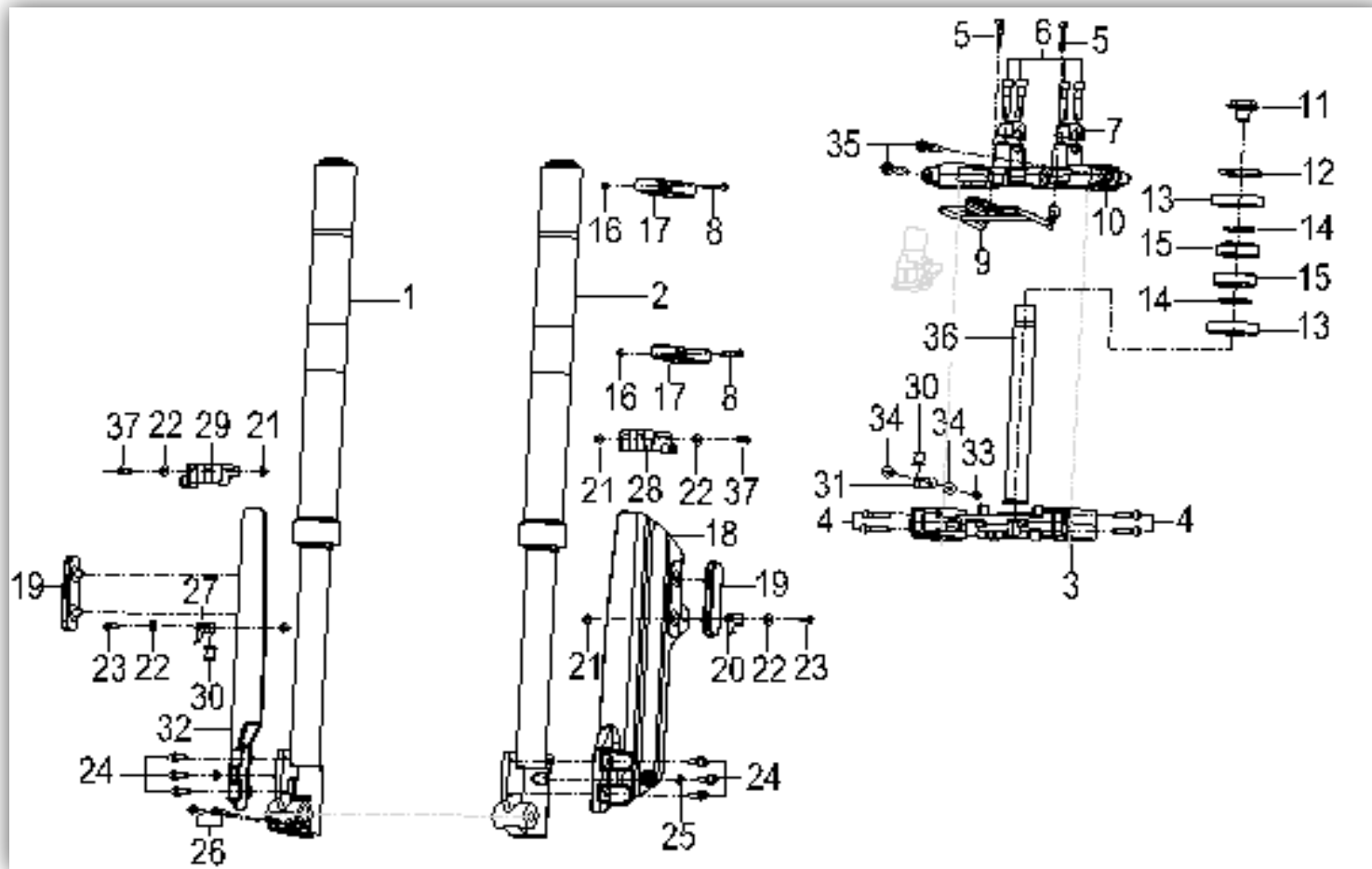
QJ125GY-16A



NO.	Part No.	CN DESCRIPTION	EN DESCRIPTION	QTY.	DESIGN CHANGE	DATE	APPLY	REMARK
F01-33	08015J690000	M8×60	bolt M8×60	1				
F01-34	B02050602065	M6×20	screw M6×20	1				
F01-35	40711J690000		rear brak epedal	1				
F01-36	B04170600055	M6	nut M6	1				
F01-37	B01010604024	螺栓M6×40	bolt M6×40	1				
F01-38	B04000600055	M6	nut M6	1				
F01-39	40717D010000		fixing bolt	1				
F01-40	B04000600055	M6	nut M6	1				
F01-41	B090002018A5	2×18	open-end pin	2				

F02 前叉 FORK ASSY.

QJ125GY-16A

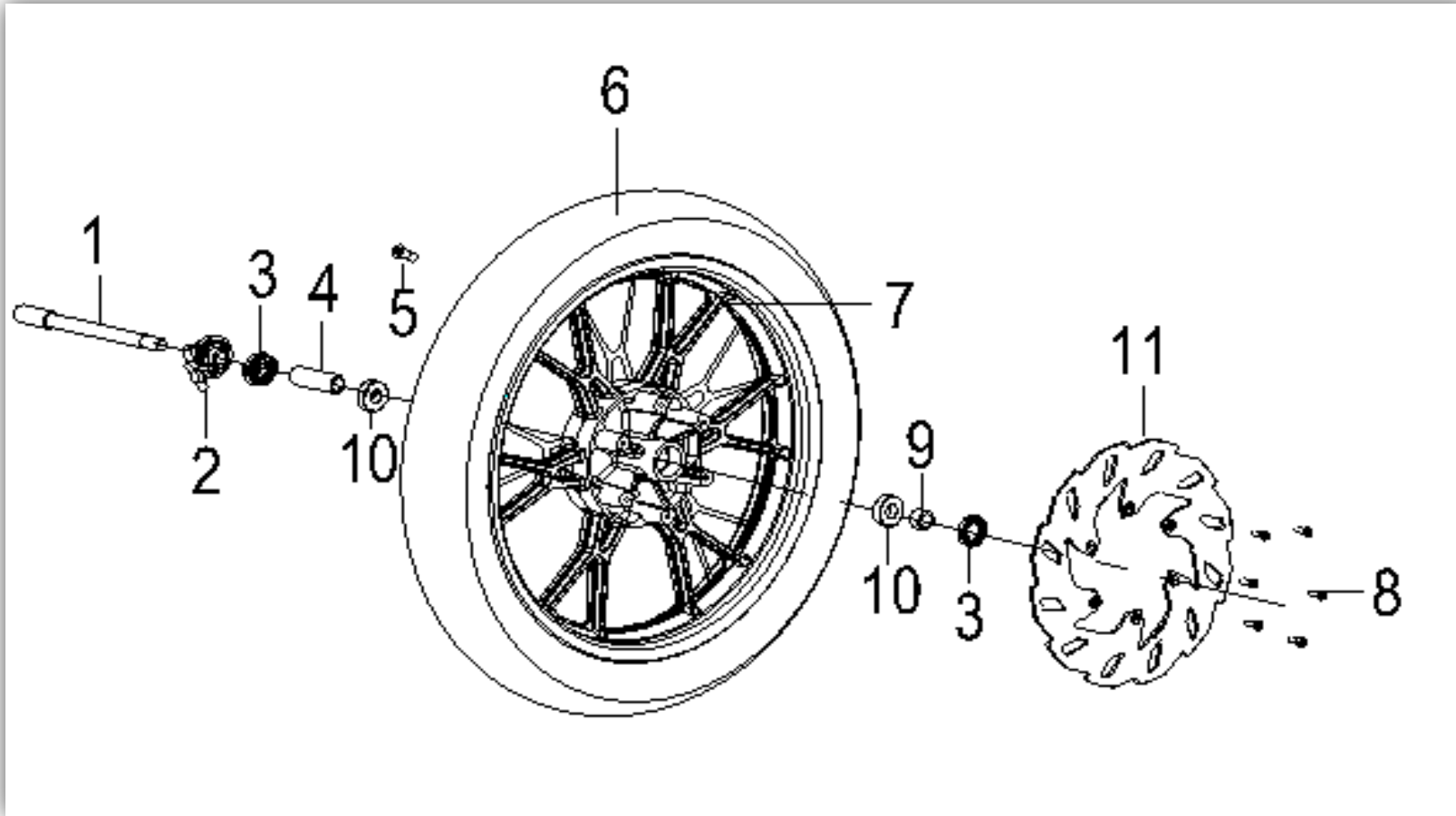


NO.	Part No.	CN DESCRIPTION	EN DESCRIPTION	QTY.	DESIGN CHANGE	DATE	APPLY	REMARK
F02-1	43300J69BH00	前右减震器总成	front right shock absorber assy.	1				
F02-2	43200J69BH00	前左减震器总成	front left shock absorber assy.	1				
F02-3	43102J690000	前叉冠	crown	1				
F02-4	B02050603064	M6×30 螺钉	screw M6×30	4				
F02-5	B02050503065	M5×30 螺钉	screw M5×30	2				
F02-6	B02050804065	M8×40 螺钉	screw M8×40	4				
F02-7	43014D010000	前叉座/手把上管	seat,handlerbar,upper	2				
F02-8	B02050502565	M5×25 螺钉	screw M5×25	2				
F02-9	65490J690000	前叉架/车速表总成	bracket,speedometer assy	1				

F02-10	43011D010000	零件	upper connecting board	1			
F02-11	43049D010000	零件	bolt,locking,column	1			
F02-12	43008D010010	零件	nut,lower	1			
F02-13	43022D010000	零件2	cover,anti-dust 2	2			
F02-14	43005D010000	零件1	cover,anti-dust 1	2			
F02-15	B12133020500	零件30205	bearing 30205	2			
F02-16	B04020500015	零件M5	thin nut M5	2			
F02-17	43035D010000	零件	clap,disc brake,rear	2			
F02-18	43053J69BH00	零件(BH)	left guard plate,front shock absorber black bh	1			
F02-19	86300D010000	零件	side reflector	2			
F02-20	43061D010010	零件	speedometer holder cable	1			
F02-21	B04070500055	零件M5	nut M5	4			
F02-22	B07020000505	零件5	washer 5	4			
F02-23	B02050501265	零件M5×12	screw M5×12	2			
F02-24	47019K670001	组合螺钉M6×12	screw w/washer M6×12	6			
F02-25	B07030000605	零件6	washer 6	2			
F02-26	B02050602564	零件M6×25	screw M6×25	2			
F02-27	43035J690000	零件	clip pipe,disc brake	1			
F02-28	43058J690000	零件	bracket left guard plate,front shock absorber	1			
F02-29	43059J690000	零件	bracket right guard plate,front shock absorber	1			
F02-30	43062D010000	零件	speedometer holder cable rubber ring	2			
F02-31	43070D010020	零件2	speedometer holder cable ii	1			
F02-32	43054J69BH00	零件(BH)	right guard plate,front shock absorber black bh	1			

F03 前轮 FRONT WHEEL ASSY.

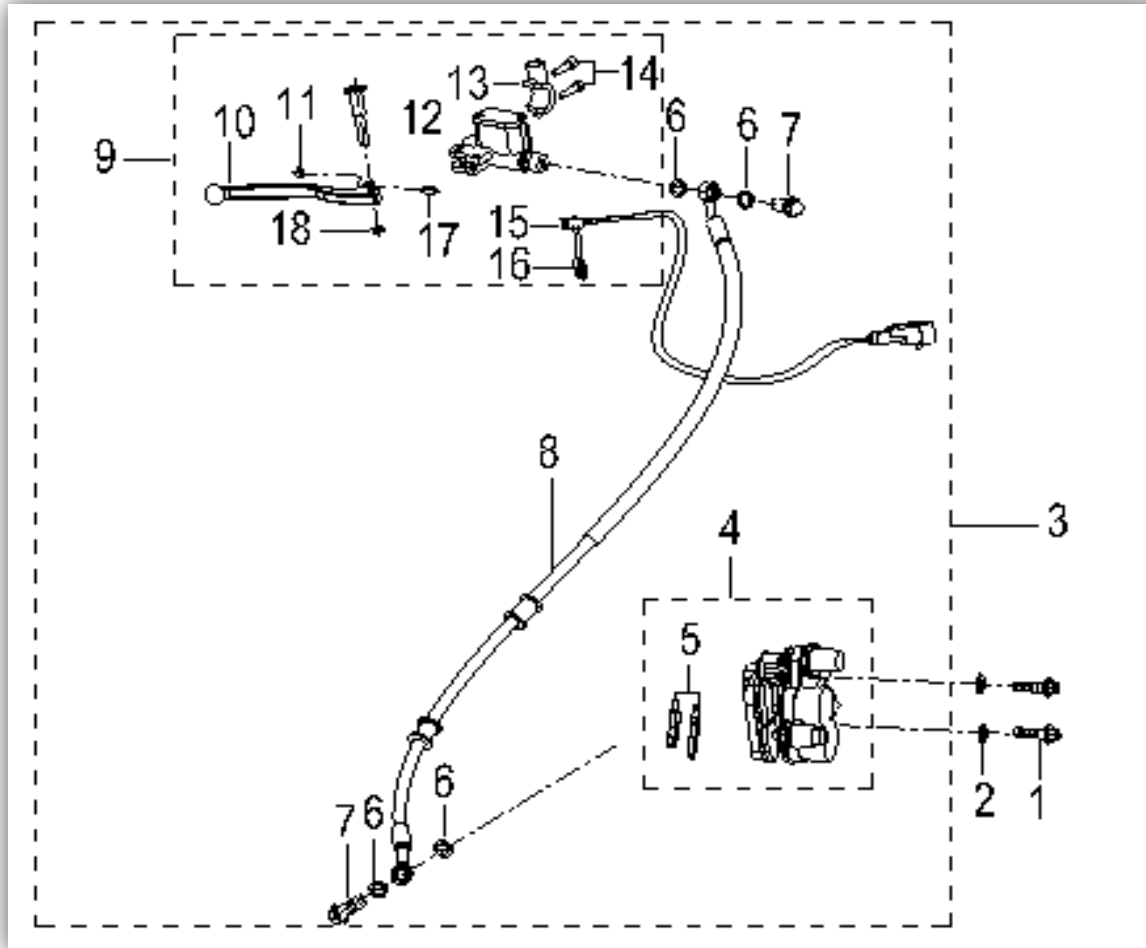
QJ125GY-16A



NO.	Part No.	CN DESCRIPTION	EN DESCRIPTION	QTY.	DESIGN CHANGE	DATE	APPLY	REMARK
F03-1	44004D010030	前轮轴M14×1.5×219	front wheel shaft M14×1.5×219	1				
F03-2	44200J690000	速度表座总成,齿轮	speedometer seat assy,gear	1				
F03-3	44300B910000	油封总成,前轮	oil seal assy,front wheel	2				
F03-4	44600D010000	中间轴套,前轮	intermediate shaft sleeve,front wheel	1				
F03-5	B1403Z201100	放气阀	deflating valve	1				
F03-6	B140505E1721	无气轮100/80-17	wheel no air 100/80-17	1				
F03-7	44101D030000	前轮盘	front wheel disk	1				
F03-8	45036D010000	安装座,液刹	mounting seat,fluid brake	6				
F03-9	44005D010000	左轴套,前轮	left shaft sleeve,front wheel	1				

F04 前液刹 FRONT DISK BRAKE ASSY.

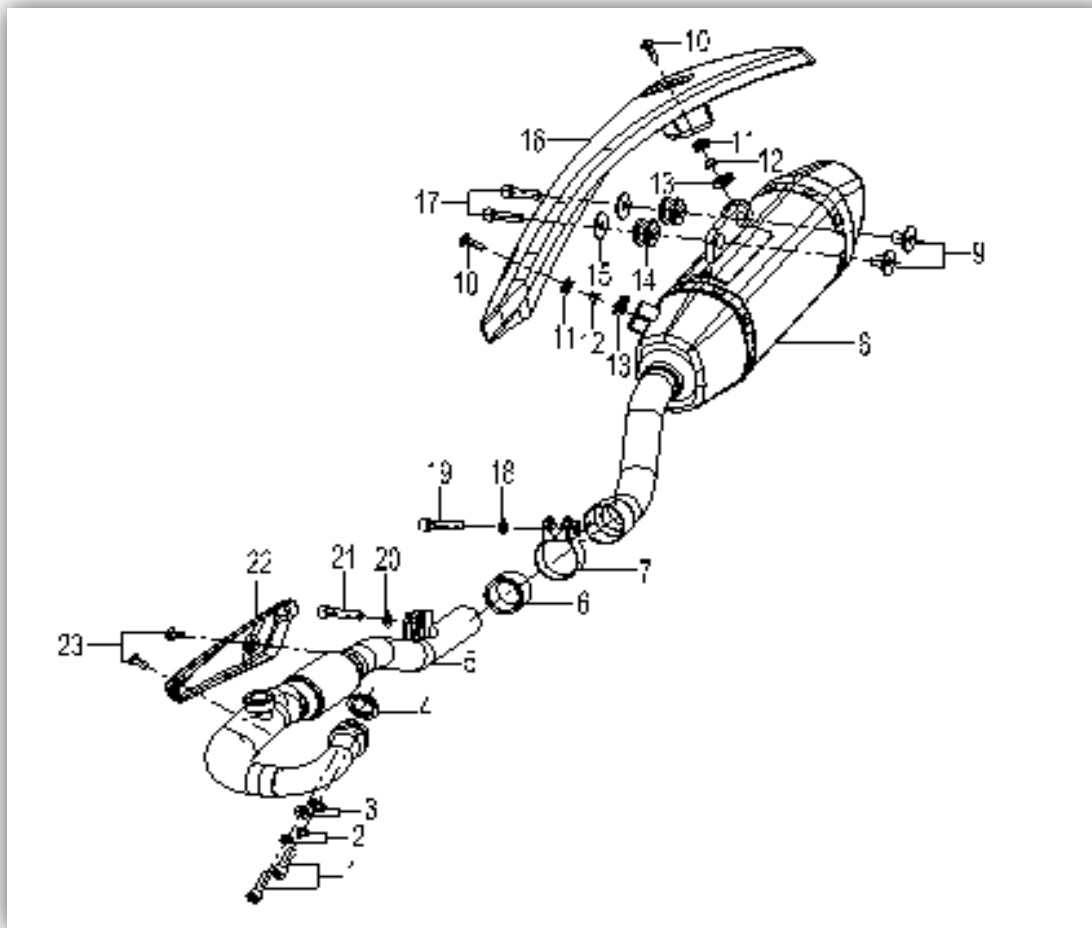
QJ125GY-16A



NO.	Part No.	CN DESCRIPTION	EN DESCRIPTION	QTY.	DESIGN CHANGE	DATE	APPLY	REMARK
F04-1	B02050803565	螺栓M8×35	bolt M8×34	2				
F04-2	B07020000803	垫圈8	washer 8	2				
F04-3	45900J690000	液刹总成	fluid brake assy.	1				
F04-4	45500J410000	卡钳液刹总成	caliperhydrocheck assy.	1				
F04-5	45110D010000	刹车蹄总成	brake shoe assy	1				
F04-6	45180J000000	密封垫	seal gasket	4				
F04-7	45037J000000	螺栓, 油管	bolt, oil tube	2				
F04-8	45200D010000	刹车管总成	brake tube assy	1				
F04-9	45400D010000	前刹车泵	front brake pump	1				

F05 消声器 MUFFLER ASSY.

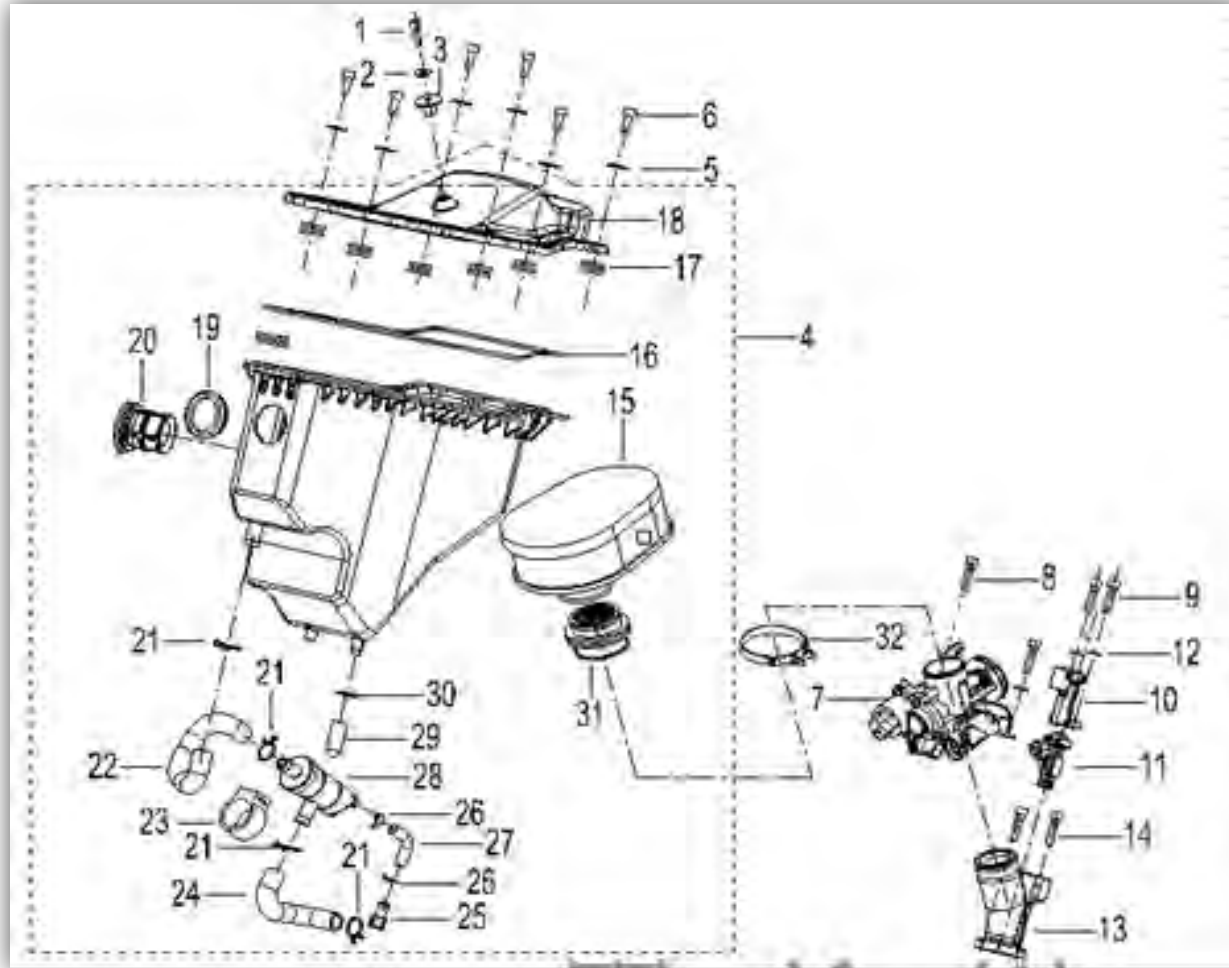
QJ125GY-16A



NO.	Part No.	CN DESCRIPTION	EN DESCRIPTION	QTY.	DESIGN CHANGE	DATE	APPLY	REMARK
F05-1	B02050803065	字字字字字M8×30	screw M8×30	2				
F05-2	B07000000805	字字字字字8	washer 8	2				
F05-3	B07030000805	字字字8	washer 8	2				
F05-4	47800G120000	字字字字字	gasket assy,exhaust pipe	1				
F05-5	47500J690000	字字字字字	exhaust pipe assy.	1				
F05-6	47036M010000	字字字字字	graphite ring gasket	1				
F05-7	47810J690000	字字字字字	clamp assy.	1				
F05-8	47200J690000	字字字字字字字字	body assy.,muffler	1				
F05-9	47039J690000	字字字字字字字	body mounting bush	2				

F06 空滤器 AIR CLEANER ASSY.

QJ125GY-16A



NO.	Part No.	CN DESCRIPTION	EN DESCRIPTION	QTY.	DESIGN CHANGE	DATE	APPLY	REMARK
F06-1	B02050502065	字字字字字M5×20	screw M5×20	1				
F06-2	B07020000505	字字5	washer 5	1				
F06-3	50031D010000	字字	sleeve gasket	1				
F06-4	49100J690000	字字字字字	air filter assy.	1				
F06-5	B07020000605	字字6	washer 6	6				
F06-6	B02050601665	字字字字字M6×16	screw M6×16	6				
F06-7	289053300000	字字字字字字	throttle valve body assy.	1				
F06-8	B02050501265	字字字字字M5×12	screw M5×12	2				
F06-9	B02050602565	字字字字字M6×25	screw M6×25	2				

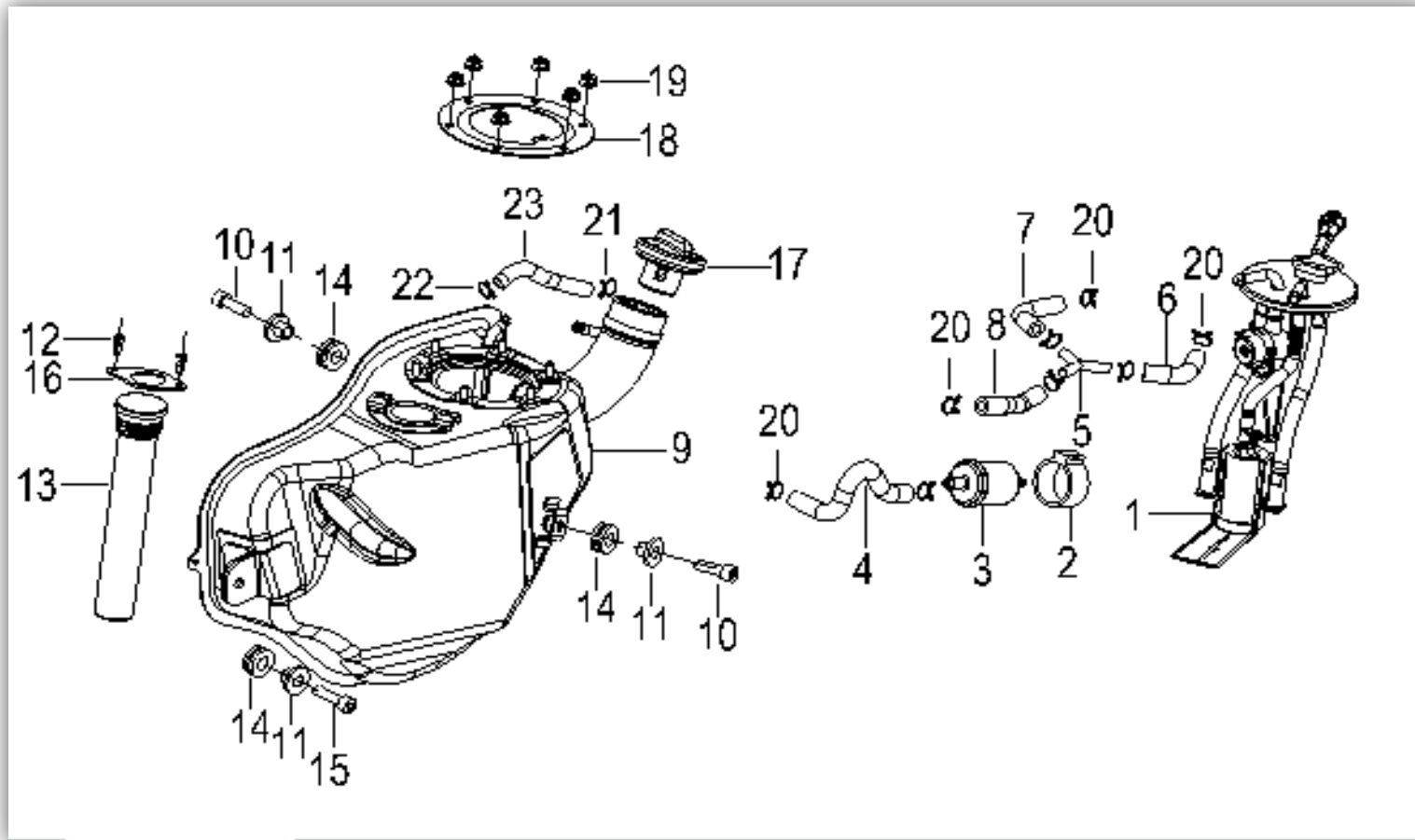
JCK (Q48-01) -QJ125GY-16A (欧III) -1A

C2330001CR00

F06-10	110023300000	□□□□□□	oil injection nozzle bracket	1			
F06-11	280053300000	□□□□	oil ejector	1			
F06-12	B07020000605	□□□6	washer 6	2			
F06-13	100103300000	□□□□□□	intake pipe	1			
F06-14	B02050602565	□□□□□□M6×25	screw M6×25	2			
F06-15	49200J690000	□□□□□□	filter core assy.	1			
F06-16	49113J690000	□□□□	seal ring	1			
F06-17	49022J690000	□□□□□□	rubber bush	7			
F06-18	49001J690000	□□□□□□□	upper cover,air filter	1			
F06-19	49117J690000	□□□□	rubber sleeve	1			
F06-20	49002J690000	□□□□	intake pipe	1			
F06-21	B17010170003	□□□□□□Φ17	clip Φ17	4			
F06-22	49311J690000	□□□□□□□	air pressure balance pipe ASSY.	1			
F06-23	49876B650000	□□□□	rubber sleeve	1			
F06-24	49115J690000	□□□□□□□	pipe, withdraw, exhaust air	1			
F06-25	49011T020000	□□□	oil plug	1			
F06-26	B17010090003	钢丝卡箍Φ9	clip Φ9	2			
F06-27	49010K670000	□□□□	oil tube	1			
F06-28	49871B650000	□□□□□□	small air filter	1			
F06-29	49840J690000	□□□□	valve,one-way	1			
F06-30	B17010110003	钢丝卡箍Φ11	clip Φ11	1			
F06-31	49005J690000	□□□□	pipe.air outlet	1			
F06-32	49350T090000	□□□□□□□□	clip ASSY.	1			

F07 油箱 FUEL TANK ASSY.

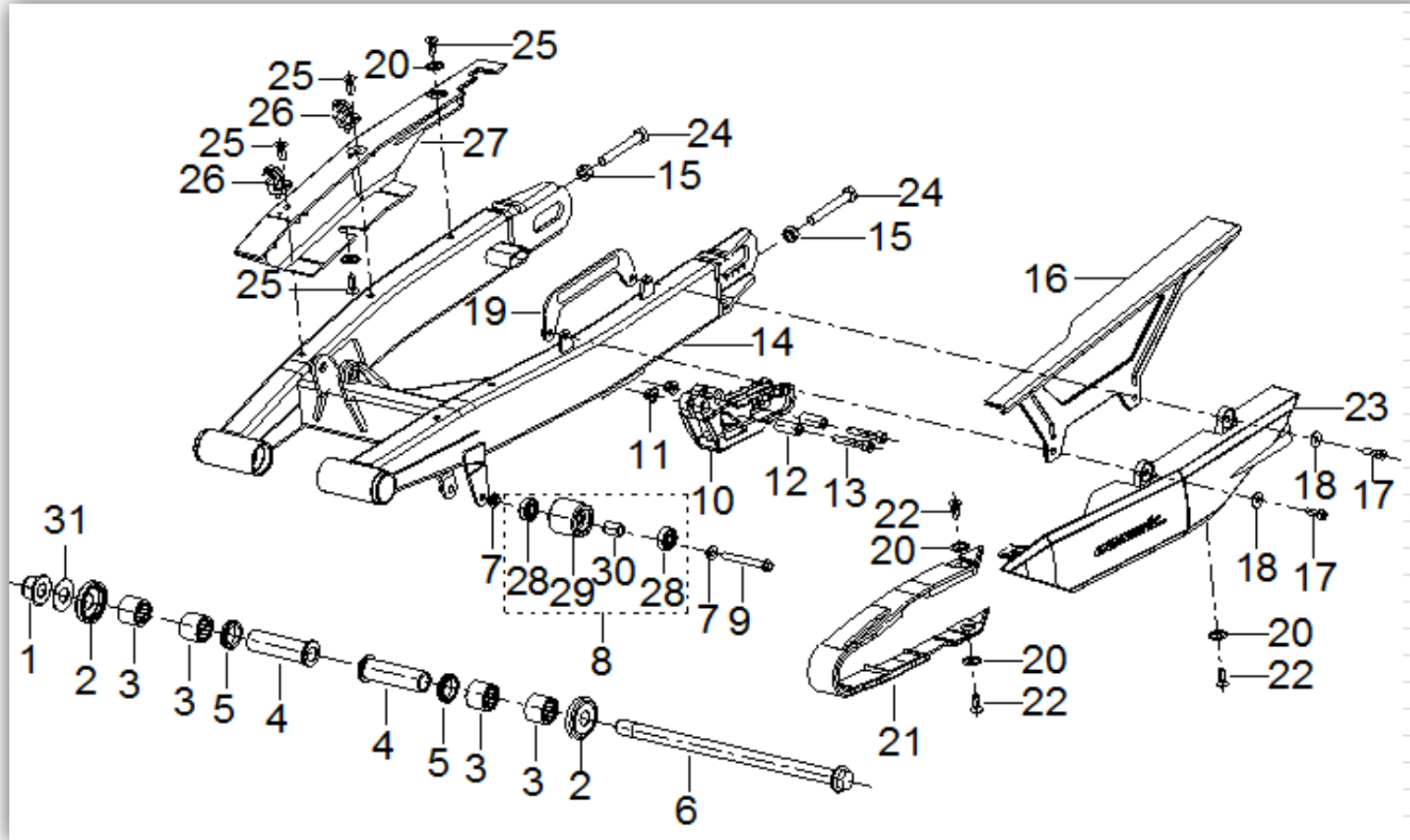
QJ125GY-16A



NO.	Part No.	CN DESCRIPTION	EN DESCRIPTION	QTY.	DESIGN CHANGE	DATE	APPLY	REMARK
F07-1	50400J690000	油泵总成	oil pump assy.	1				
F07-2	50391T430001	滤网	jacket,filter	1				
F07-3	50340N100001	滤网总成	filter assy.	1				
F07-4	50075J690000	高压燃油管 III	high-pressure fuel tube iii	1				
F07-5	50008N070000	三通管	t-branch	1				
F07-6	50073J690000	高压燃油管 I	high-pressure fuel tube i	1				
F07-7	50076J690000	高压燃油管 IV	high-pressure fuel tube-iv	1				
F07-8	50074J690000	高压燃油管 II	high-pressure fuel tube ii	1				
F07-9	50100J690000	油箱总成	body assy.,fuel tank	1				

F09 后摆臂 REAR SWINGING ARM ASSY.

QJ125GY-16A



NO.	Part No.	CN DESCRIPTION	EN DESCRIPTION	QTY.	DESIGN CHANGE	DATE	APPLY	REMARK
F09-1	B04171415055	自锁螺母M14×1.5	nut M14×1.5	1				
F09-2	53220J690000	环,防尘,总成	ring,anti-dust,assy	2				
F09-3	B1212K202000	针状轴承HK2020	needle bearing hk2020	4				
F09-4	53005J690000	衬套,后摇臂	bush. rr. swing arm	2				
F09-5	53210J060000	油封	oil seal	2				
F09-6	53001J690000	轴,固定,后摇臂	shaft,fix,rr.swing arm	1				
F09-7	53021J410000	链条张紧滑轮衬套	chain tension pulley bush	2				
F09-8	53040J410000	链条张紧滑轮总成	chain tension pulley assy	1				
F09-9	B01090605063	螺栓M6×50	bolt M6×50	1				

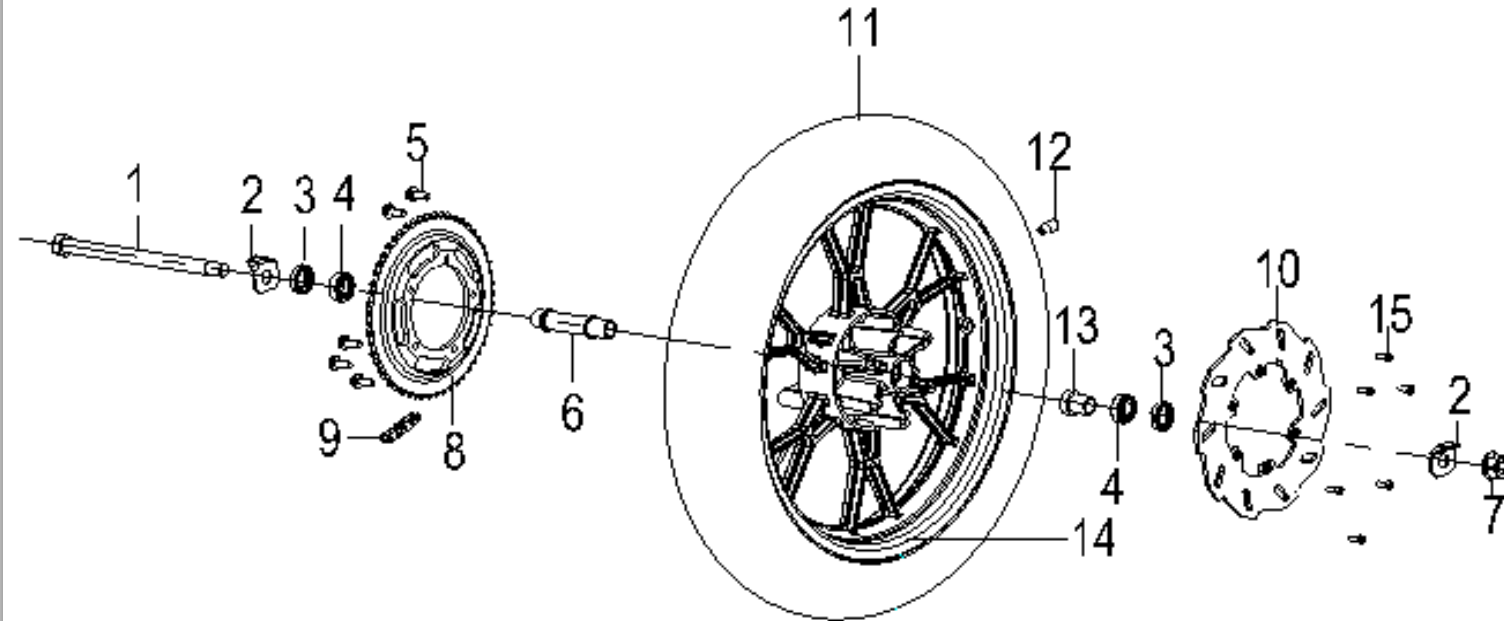
JCK (Q48-01) -QJ125GY-16A (欧III) -1A

C2330001CR00

F09-10	53162N210000	□□□□□	chain sling	1			
F09-11	B04170600055	□□□□□M6	nut M6	2			
F09-12	53163N210000	□□□□□	cage bush	2			
F09-13	B01090604565	□□□M6×45	bolt M6×45	2			
F09-14	53100J690000	□□□□□□□□	weld assy.,rr. swing arm	1			
F09-15	B04000800055	□□□M8	nut M8	2			
F09-16	53053D010000	□□□□□	chain protecting grill up	1			
F09-17	B02050501565	□□□□□M5×15	screw M5×15	2			
F09-18	B07020000505	□□□5	washer 5	2			
F09-19	53060D010000	□□□□□□□□	reinforcement plate assy	1			
F09-20	53056D010050	□□□2	sleeve gasket	6			
F09-21	53004J690000	□□□□□	chain shield block	1			
F09-22	47019K670001	组合螺钉M6×12	screw w/washer M6×12	6			
F09-23	53051J690000	□□□□□□□□	rr.swing arm decorating boardl	1			
F09-24	B01010806025	□□□M8×60	bolt M8×80	2			
F09-25	B02170601463	□□□M6×1×14	screw M6×1×14	2			
F09-26	40022N050002	□□□□□	clap,disc brake,	2			
F09-27	53052D010000	□□□□□□□□	rr.swing arm decorating boardr	1			
F09-28	B12016060800	□□□□□□□□	chain tension pulley bearing	2			
F09-29	53018J410000	□□□□□	chain tension pulley	1			
F09-30	53019J410000	□□□□□□□□	chain tension pulley bush	1			
F09-31	08021K670000	垫圈φ16×φ32×2	washer φ16×φ32×2	1			

F10 后轮 REAR WHEEL ASSY.

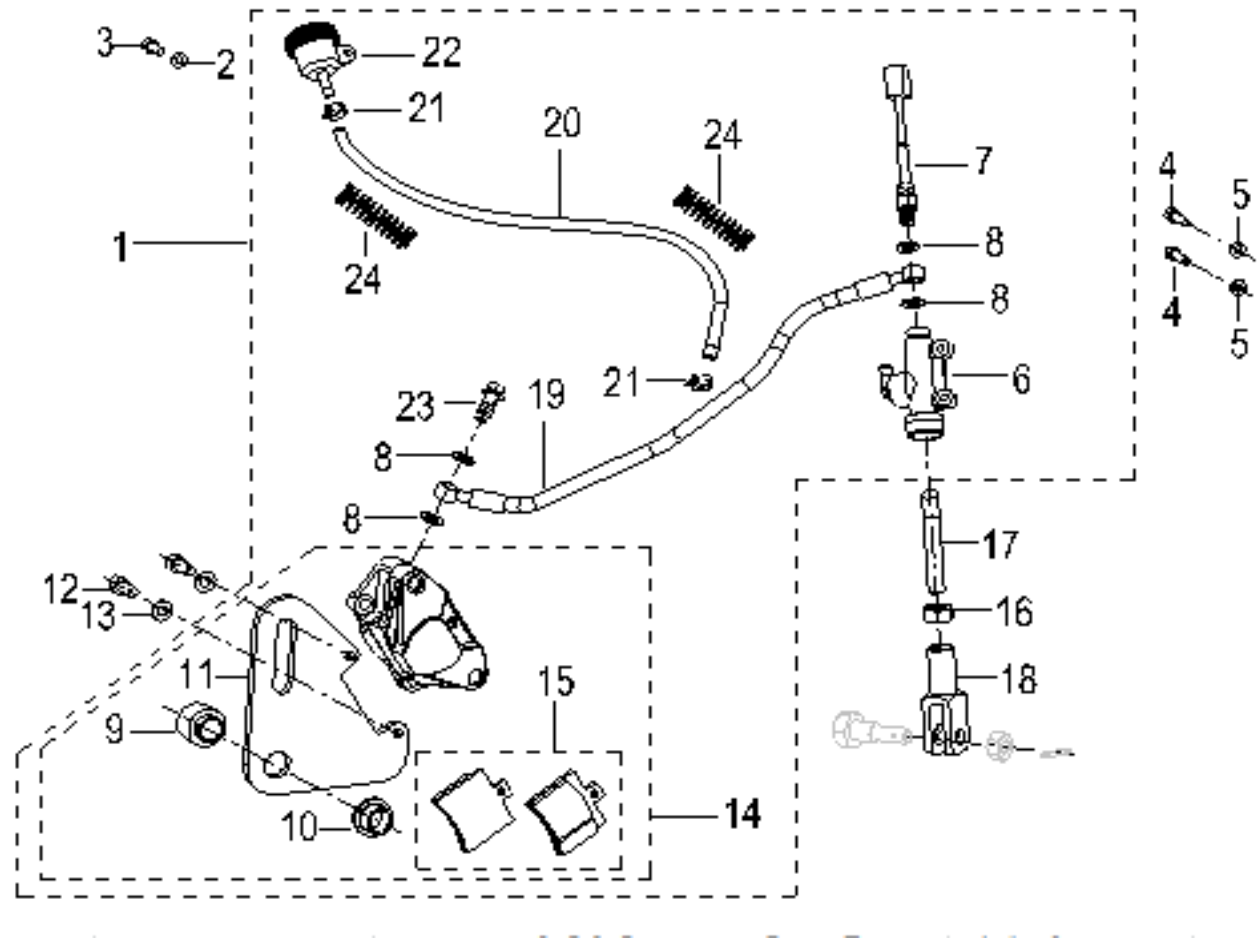
QJ125GY-16A



NO.	Part No.	CN DESCRIPTION	EN DESCRIPTION	QTY.	DESIGN CHANGE	DATE	APPLY	REMARK
F10-1	54004J690000	轴	shaft,rear wheel	1				
F10-2	54032J690000	压板	press plate,rear wheel	2				
F10-3	44300B910000	油封总成	oil seal assy,front wheel	2				
F10-4	B12016000300	6003-2RS	bearing 6003-2rs	2				
F10-5	60015D010000	链轮安装螺栓M8×22	mounting bolt,sprocket wheel M8×22	5				
F10-6	54550J690000	后轴衬套	bush,rear bush assy	1				
F10-7	B04171615055	M16×1.5	nut M16×1.5	1				
F10-8	60002J690000	链轮	sprocket wheel	1				
F10-9	B1502W1132B0	428HG-1×132	chain 428hg-1×132	1				

F11 后液刹 REAR DISK BRAKE ASSY.

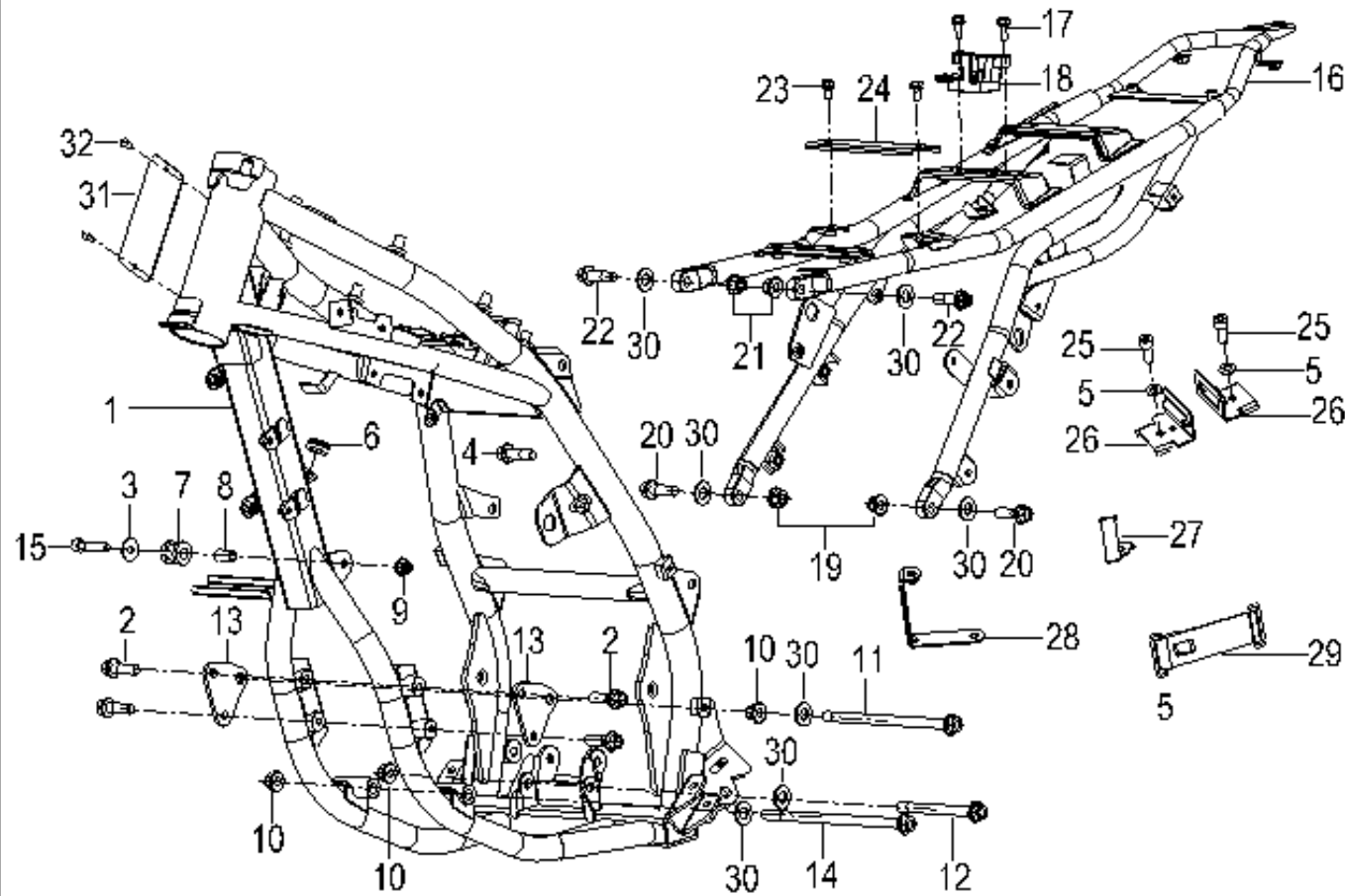
QJ125GY-16A



NO.	Part No.	CN DESCRIPTION	EN DESCRIPTION	QTY.	DESIGN CHANGE	DATE	APPLY	REMARK
F11-1	55900J690000	后液刹总成	rear disc brake assy.,	1				
F11-2	B07030000605	垫圈6	washer 6	1				
F11-3	B02050601665	六角螺钉M6×16	screw M6×16	1				
F11-4	B02050601665	内六角螺钉M6×16	screw M6×16	2				
F11-5	B07030000605	垫圈6	washer 6	2				
F11-6	55009J410000	油泵总成	oil pump assy.	1				
F11-7	55300J410000	制动开关零件	braking switch components	1				
F11-8	45180J000000	垫圈	plate washer	4				
F11-9	55049J690000	衬套	bush i	1				

F12 车架 FRAME BODY ASSY.

QJ125GY-16A



NO.	Part No.	CN DESCRIPTION	EN DESCRIPTION	QTY.	DESIGN CHANGE	DATE	APPLY	REMARK
F12-1	57110J690000	焊接总成,车架前	welding assy,frame front	1				
F12-2	B01090805065	螺栓M8×50	bolt M8×50	4				
F12-3	B07020000803	垫圈φ8	washer 8	1				
F12-4	B02050802065	螺钉M8×20	screw M8×20	1				
F12-5	B07030000505	垫圈5	washer 5	2				
F12-6	65705J000000	线束,后灯清洗器	cable,rear lamp washer	1				
F12-6	43052J210000	橡胶垫	rubber washer	1				
F12-7	57025J690000	缸头橡胶套	cylinder head rubber sleeve	1				
F12-8	57026J690000	缸头衬套,固定轴	cylinder head bushing,fixing axle	1				

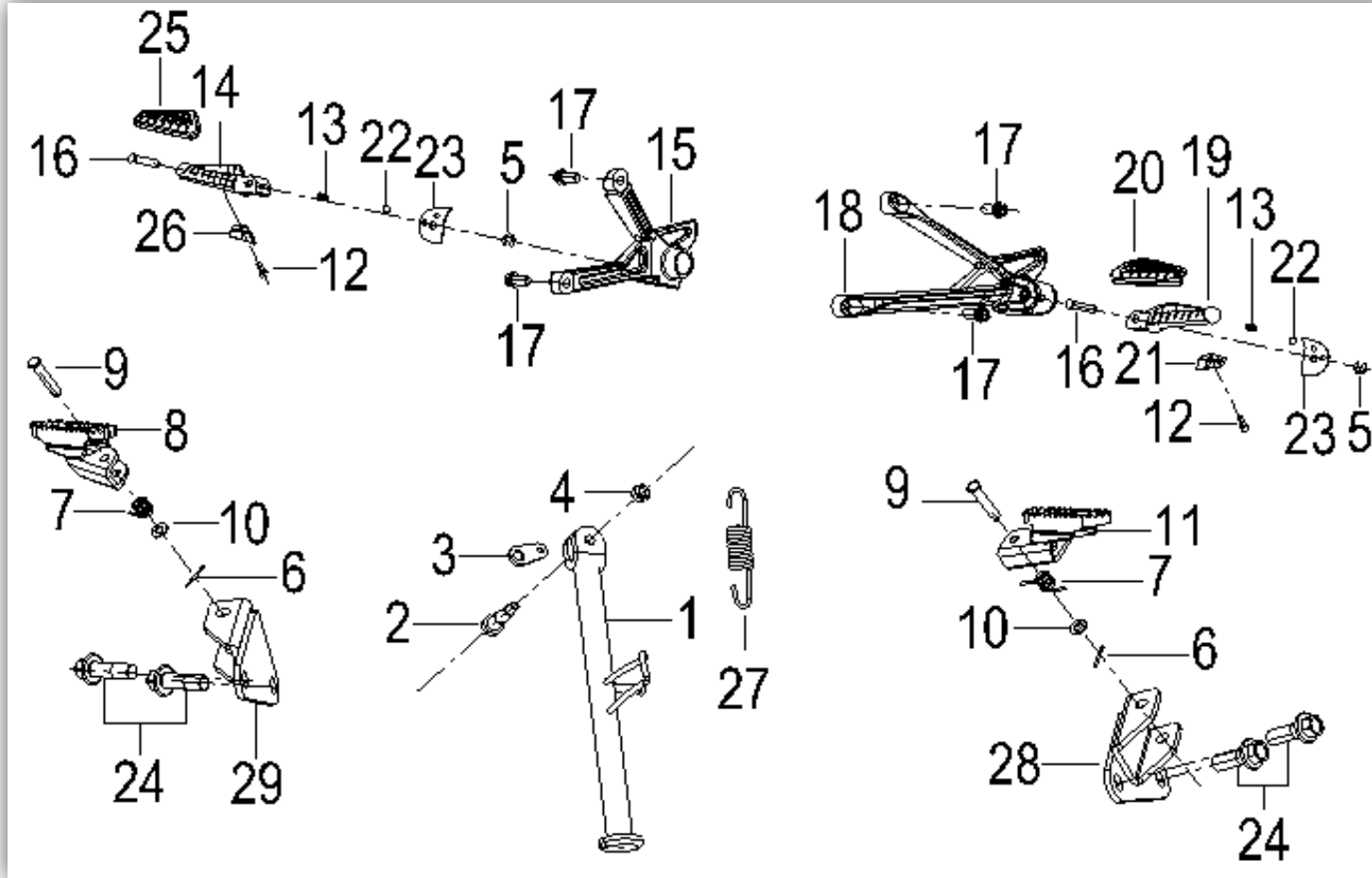
JCK (Q48-01) -QJ125GY-16A (欧III) -1A

C2330001CR00

F12-9	B04170800055	螺母M8	nut M8	1			
F12-10	B04171012555	螺母M10×1.25	nut M10×1.25	3			
F12-11	B01591016565	螺栓M10×1.25×165	bolt M10×1.25×165	1			
F12-12	B01591010065	螺栓M10×1.25×100	bolt M10×1.25×100	1			
F12-13	57011J690000	板	plate,hanging,engine	2			
F12-14	B01591018565	螺栓M10×1.25×185	bolt M10×1.25×185	1			
F12-15	B02050803565	螺钉M8×35	screw M8×35	1			
F12-16	57120J690000	焊接总成,车架后	welding assy,frame back	1			
F12-17	B01090601265	螺栓M6×12	bolt M6×12	2			
F12-18	88500D010000	锁座锁扣	seat lock bracket	1			
F12-19	B04171012555	螺母M10×1.25	nut M10×1.25	2			
F12-20	B01591003065	螺栓M10×1.25×30	bolt M10×1.25×30	2			
F12-21	B04171012555	螺母M10×1.25	nut M10×1.25	2			
F12-22	57019J690000	车架螺栓,安装	frame bolt,mounting	2			
F12-23	B01090601265	螺栓M6×12	bolt M6×12	2			
F12-24	57413J690000	座椅支撑,支架	seat supports,holders	1			
F12-25	B02050601665	螺钉M6×16	screw M6×16	2			
F12-26	58751J690000	安装板,电池	mounting plate,battery	2			
F12-27	57089J690000	熔断器盒支架	fuse box bracket	1			
F12-28	58790J690000	继电器支架	relay bracket assy	1			
F12-29	96020J690000	电池带	band battery assy	1			
F12-30	B07030001005	垫圈10	washer 10	7			
F12-31	57001J690000	标签,车架	label,frame	1			
F12-32	B100432007P0	铆钉3.2×7	rivet blind	2			

F13 踏蹬 Pedaling ASSY.

QJ125GY-16A

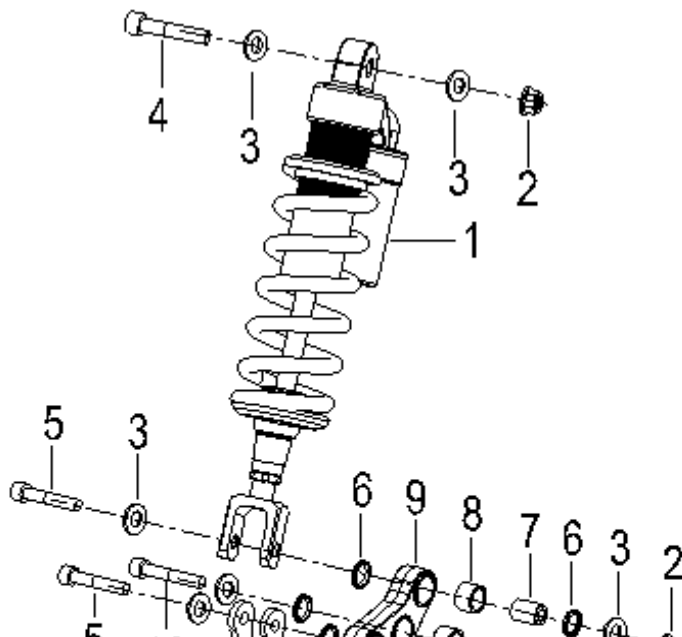


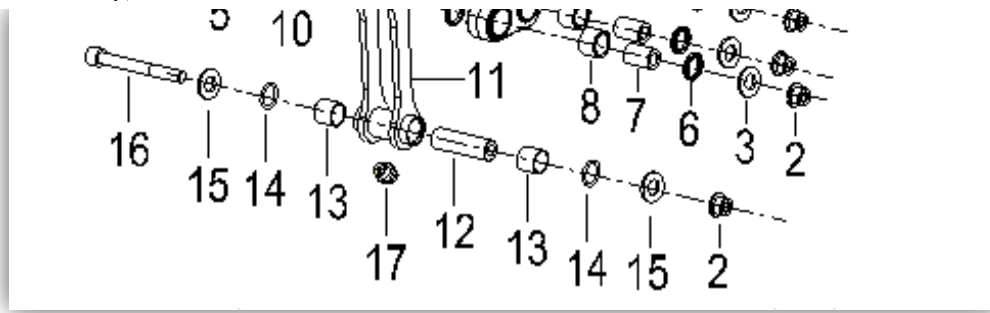
NO.	Part No.	CN DESCRIPTION	EN DESCRIPTION	QTY.	DESIGN CHANGE	DATE	APPLY	REMARK
F13-1	58700J410000	踏蹬侧架总成	side stand welding assy.	1				
F13-2	57005D010000	侧架固定螺栓	fixing bolt,side stand	1				
F13-3	57006D010000	侧架悬挂弹簧	spring,side stand plate hanging	1				
F13-4	B04011012555	M10×1.25螺母	nut M10×1.25	1				
F13-5	B0882000050A	φ5开口销	circlip5	2				
F13-6	B090002018A5	2×18开口销	open-end pin	2				
F13-7	58202D010000	直臂扭簧	straight-arm torsional spring	2				
F13-8	58230J690000	脚踏板焊接总成	weld assy,footplate r	1				
F13-9	57024D010000	轴销	pin shaft	2				

F13-10	B07030000805	8	washer8	2			
F13-11	58250D010000		weld assy,footplate l	1			
F13-12	B0280040100A	M4×10	bolt M4×10	2			
F13-13	58262S010000		footrest spring	2			
F13-14	58286S010000		footrest right back	1			
F13-15	58281J690000		footrest right back mounting bracket	1			
F13-16	58217S010000		footrest pin shaft,mounting	2			
F13-17	B02810801663	M8×16	bolt M8×16	4			
F13-18	58271J690000		footrest left back mounting bracket	1			
F13-19	58266S010000		footrest left back	1			
F13-20	08352S020000		left footrest rubber	1			
F13-21	58205S020000		left footrest rubber block	1			
F13-22	B06000002000		footrest ball	2			
F13-23	58451S010000		mounting plate,kick-pedal,	2			
F13-24	B01091002065	M10×20	bolt M10×20	4			
F13-25	08372S020000		right footrest rubber	1			
F13-26	58405S020000		right footrest rubber block	1			
F13-27	58510K020000		spring assy.,main stand	1			
F13-28	57190J690000		mounting seat,pedal,fl	1			
F13-29	57200J690000		mounting seat,pedal,fh	1			

F14 后减震器 REAR ABSORBER ASSY.

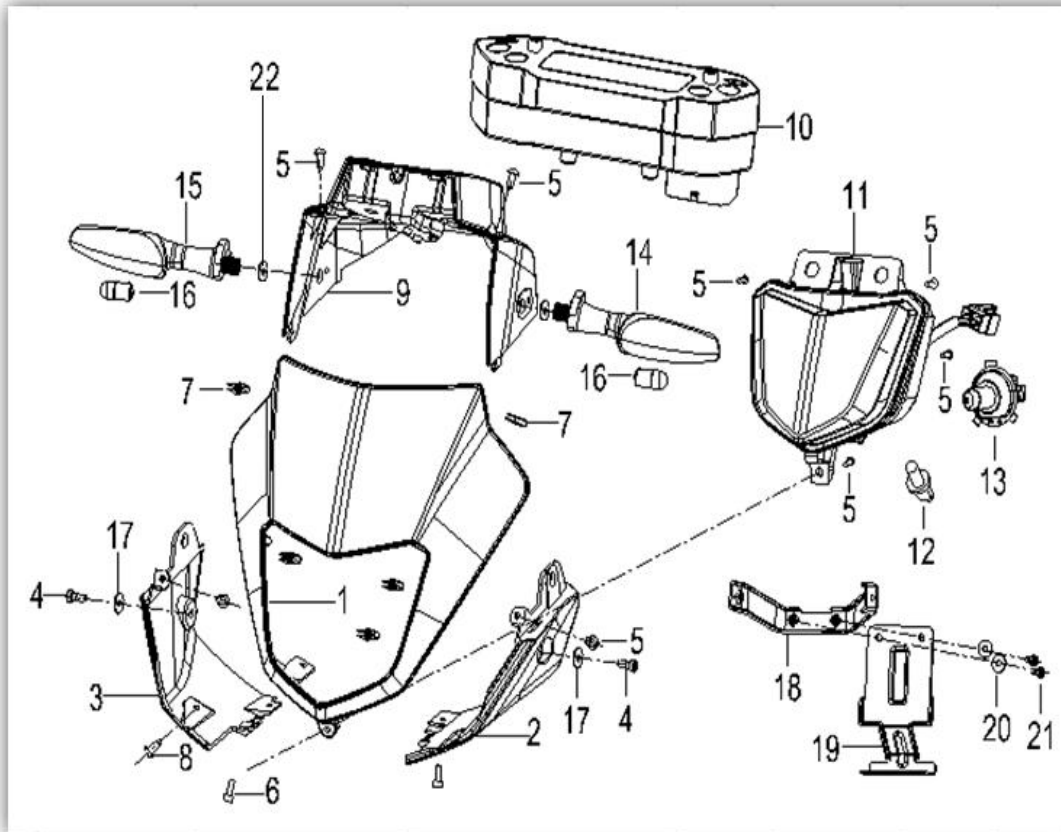
QJ125GY-16A





F16 导流罩总成 FRONT COVER ASSY.

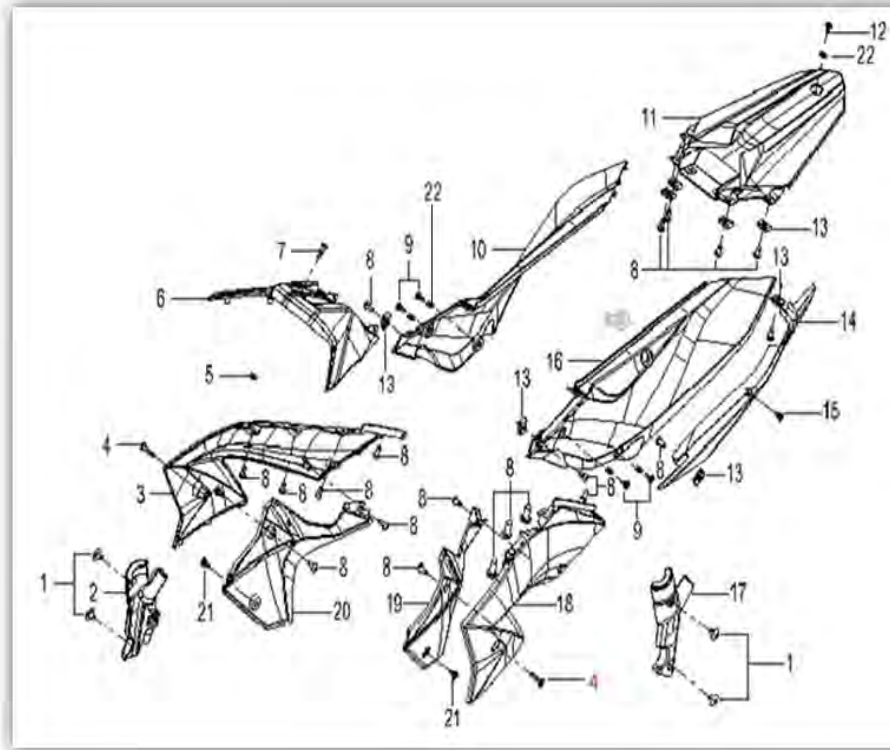
QJ125GY-16A



NO.	Part No.	CN DESCRIPTION	EN DESCRIPTION	QTY.	DESIGN CHANGE	DATE	APPLY	REMARK
F16-1	65501J69W500	导流罩(W5不带贴花)	welding assy.,mounting plate,white w5 without sticker	1				
F16-2	65504J690000	左导流罩支架	bracket assy.,cowling l	1				
F16-3	65505J690000	右导流罩支架	bracket assy.,cowling r	1				
F16-4	B02050501265	内六角螺钉M5×12	screw M5×12	2				
F16-5	08001B470000	自攻螺钉ST4.2×13	screw ST4.2×13	8				
F16-6	B02050501265	外六角螺钉M5×12	screw M5×12	2				
F16-7	65801T020020	自攻垫圈ST4.2	insert ST4.2	5				
F16-8	08005J690000	自攻螺钉ST4.2×10/F型	screw ST4.2×10/f	1				

F17 护板 SODE COVER ASSY.

QJ125GY-16A



NO.	Part No.	CN DESCRIPTION	EN DESCRIPTION	QTY.	DESIGN CHANGE	DATE	APPLY	REMARK
F17-1	47019K670000	字字字字M6×12	screw w/washer M6×12	4				
F17-2	58311J690000	字字字字	decorating board,r.	1				
F17-3	50016J69W500	右油箱护板(W5不带贴花)	guard board,fuel tank,r. white w5 without sticker	1				
F17-4	B0284060300A	字字字字字M6×30	screw M6×30	2				
F17-5	08305G120050	字字字字字字	bush	1				
F17-6	65606J690000	字字字字字字字字字字	oil tank connecting pieces,side cover	1				
F17-7	08019T490000	字字	bolt	1				
F17-8	08001B470000	自攻螺钉ST4.2×13	screw ST4.2×13	19				
F17-9	B0284060150A	字字M6×15.2	screw M6×15.2	4				

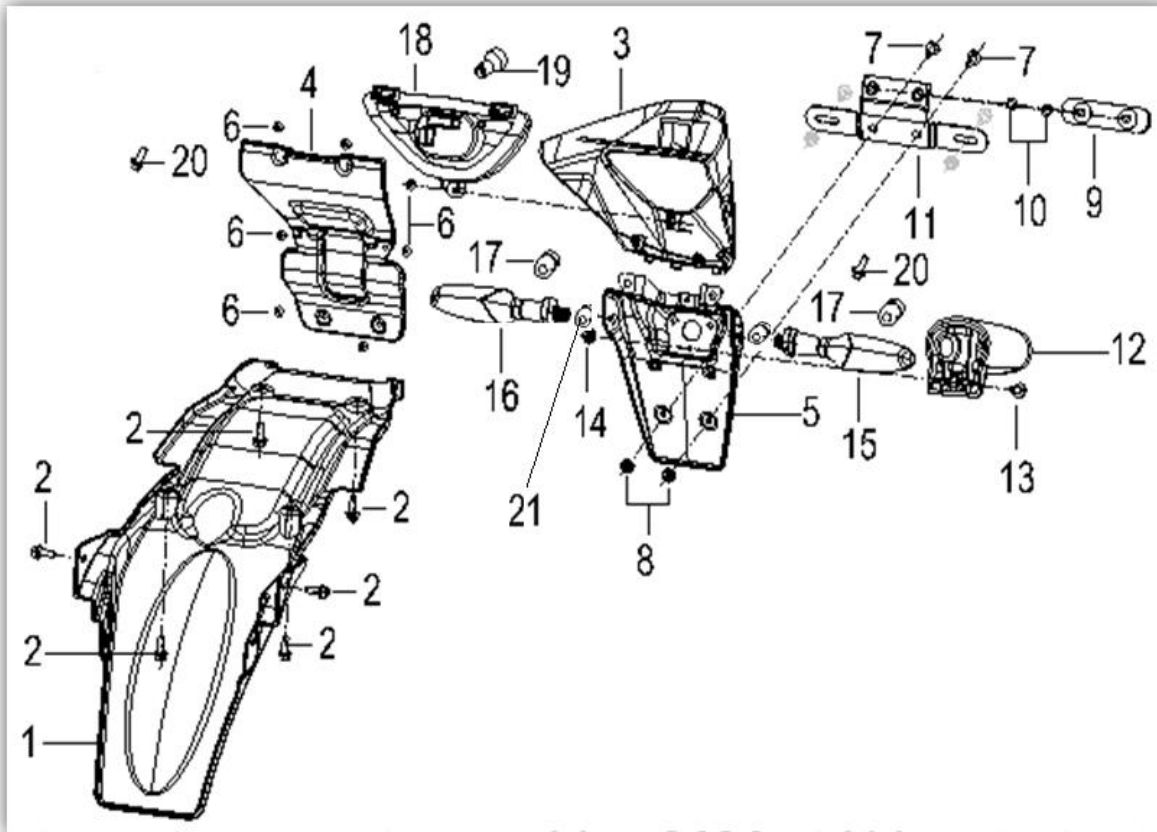
JCK (Q48-01) -QJ125GY-16A (欧III) -1A

C2330001CR00

F17-10	65602J69W500	右护板(W5不带贴花)	right guard plate white w5 without sticker	1			
F17-11	65605J69W500	左右护板联接板(W5不带贴花)	connecting pieces,side cover white w5 without sticker	1			
F17-12	B0284060150A	螺母M6×15.2	screw M6×15.2	1			
F17-13	65801T020020	衬套ST4.2	insert ST4.2	8			
F17-14	65603J690000	左护板(W5不带贴花)	left guard plate back	1			
F17-15	B0284060150A	螺母M6×15.2	screw M6×15.2	1			
F17-16	65601J69W500	左护板(W5不带贴花)	left guard plate white w5 without sticker	1			
F17-17	58211J690000	装饰板I	decorating board l	1			
F17-18	50015J69W500	左油箱护板(W5不带贴花)	guard board,fuel tank,l white w5 without sticker	1			
F17-19	65673J690000	护膝板I	knee pad board l	1			
F17-20	65674J690000	护膝板R	knee pad board r	1			
F17-21	B0284060150A	螺母M6×15.2	screw M6×15.2	2			
F17-22	65313T430000	垫圈	washer	5			NEW ADD

F18 后挡泥板 REAR FENDER ASSY.

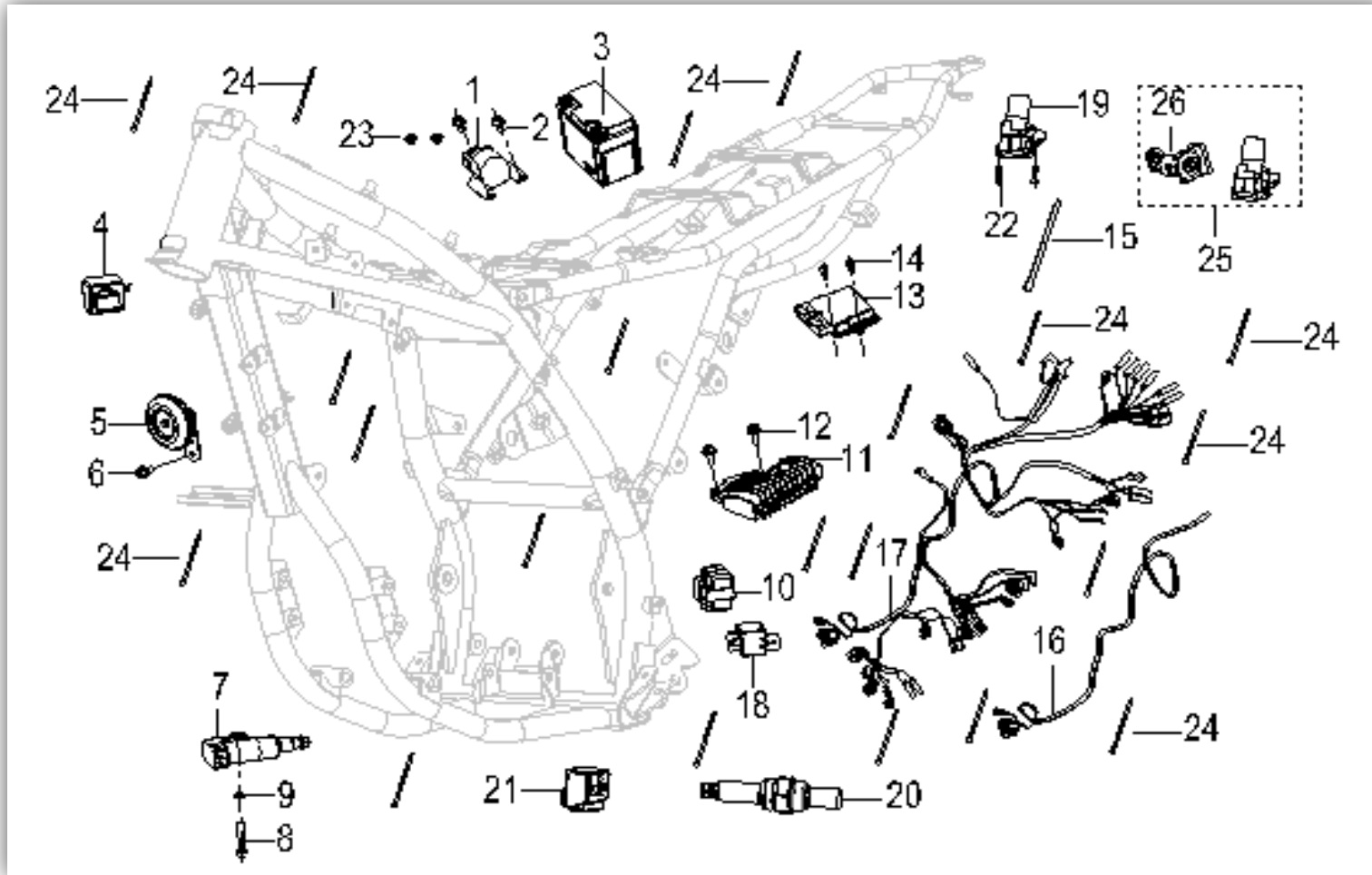
QJ125GY-16A



NO.	Part No.	CN DESCRIPTION	EN DESCRIPTION	QTY.	DESIGN CHANGE	DATE	APPLY	REMARK
F18-1	65731J690000	foreside assy.,rr. fender	foreside assy.,rr. fender	1				
F18-2	B01090601665	螺栓M6×16	bolt M6×16	6				
F18-3	65701J690000	后挡泥板	rear fender	1				
F18-4	65741J690000	后挡泥板后部	aft part,rr. fender	1				
F18-5	65709J690000	后挡泥板II	rear fender ii	1				
F18-6	08001B470000	自攻螺钉ST4.2×13	screw ST4.2×13	7				
F18-7	B02830601463	螺栓M6×1×14	bolt M6×1×14	2				
F18-8	B04070600055	螺母M6	nutM6	2				
F18-9	86500B300000	后挡泥板反光板	reflector assy.back	1				

F20 电器 ELECTRICAL EQUIPMENT ASSY.

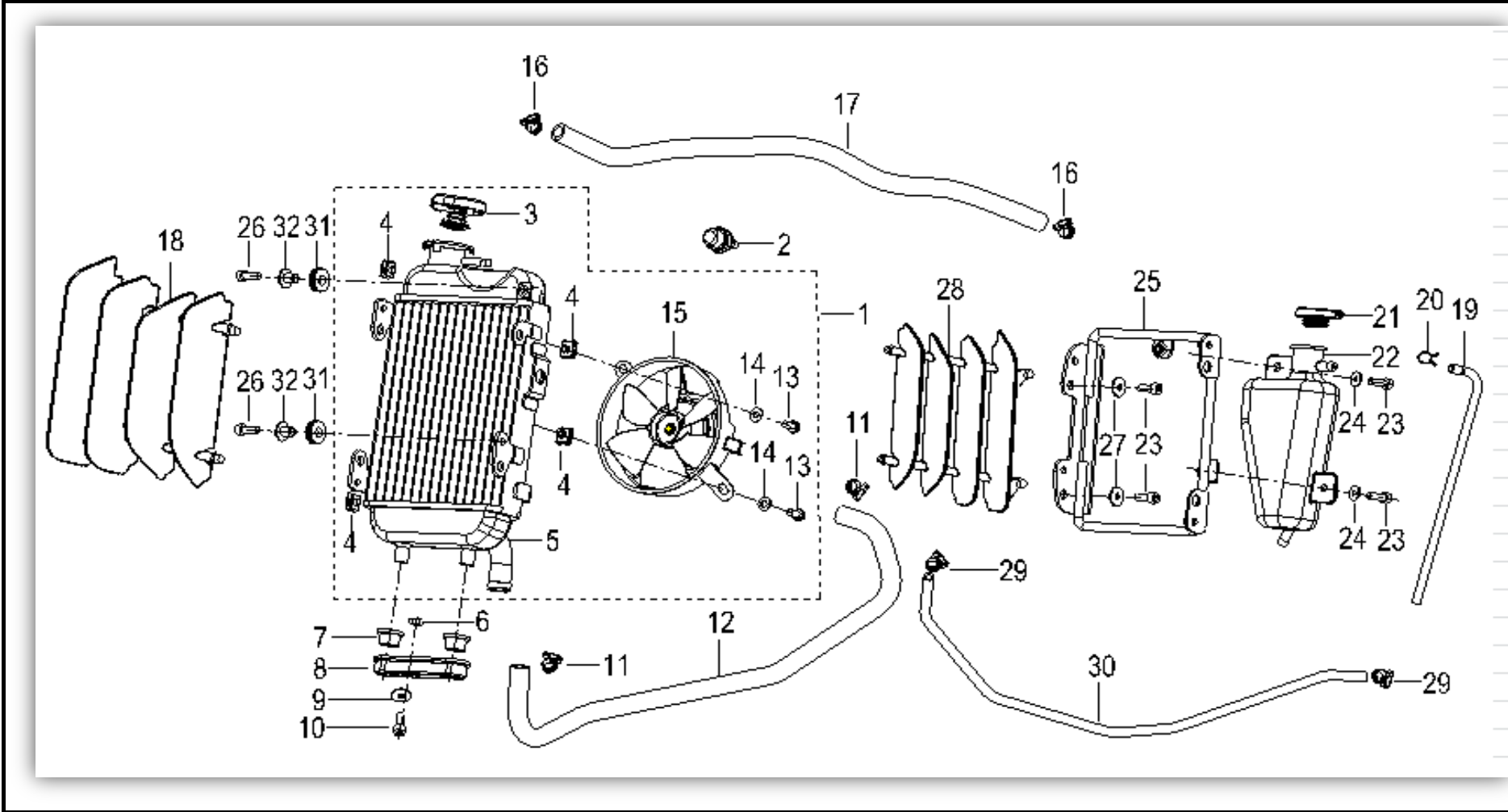
QJ125GY-16A



NO.	Part No.	CN DESCRIPTION	EN DESCRIPTION	QTY.	DESIGN CHANGE	DATE	APPLY	REMARK
F20-1	94400K310001	电电电电电电电电电电	head light control relay	1				
F20-2	B01090601265	螺栓M6×12	bolt M6×12	2				
F20-3	96100J690000	蓄电池YTZ7S	battery YTZ7S	1				supplied from Taiwan
F20-4	96400J690000	电电电	flash apparatus	1				
F20-5	95100D010000	电电	horn	1				
F20-6	B01090601265	电电M6×12	bolt M6×12	1				
F20-7	96210N070000	电电电电	ignition co-il	1				
F20-8	B02050603565	电电电电电电M6×35	screw M6×35	1				
F20-9	B07030000605	电电6	washer 6	1				

F22 冷却系统 COOL SYSTEM ASSY.

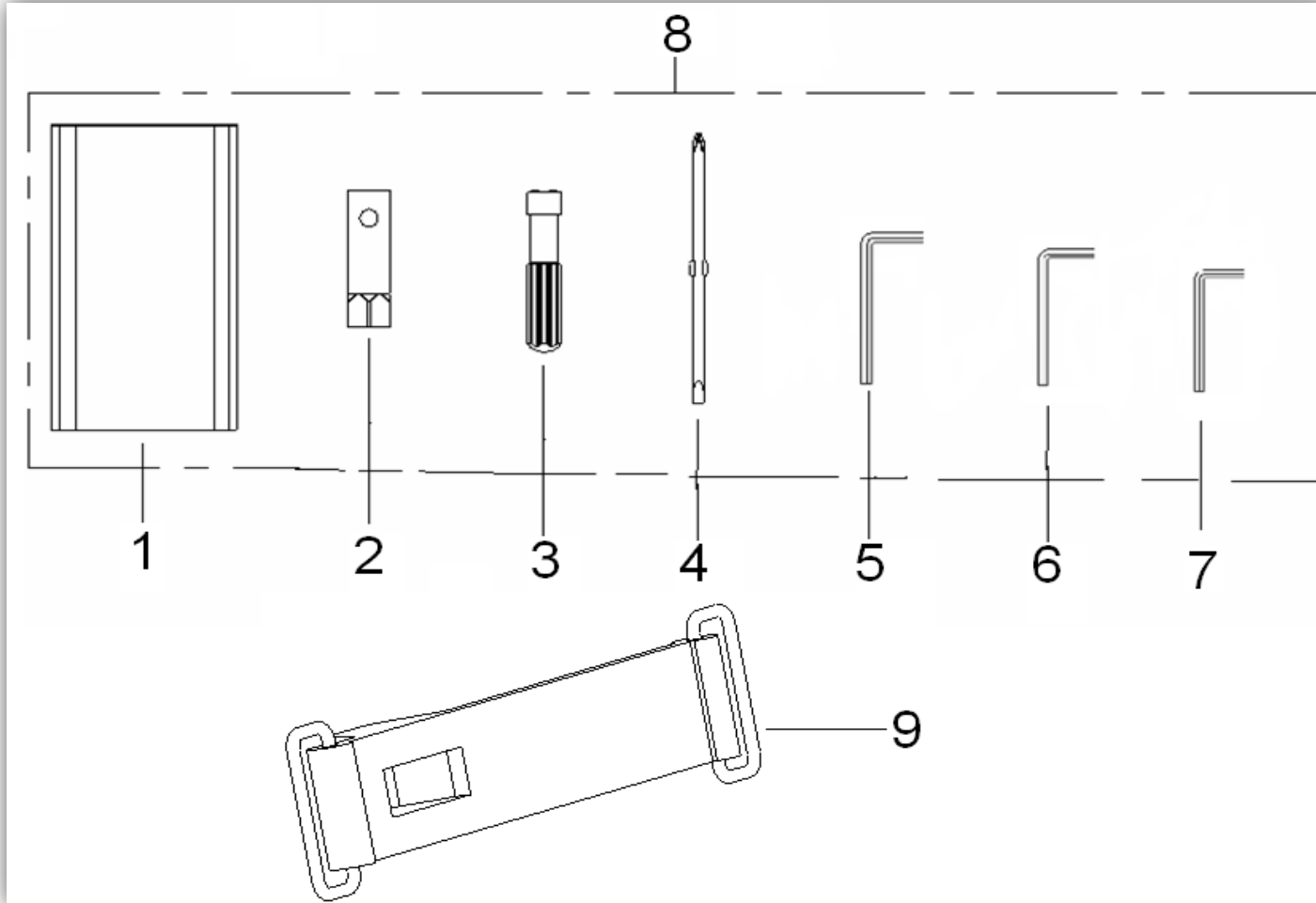
QJ125GY-16A



NO.	Part No.	CN DESCRIPTION	EN DESCRIPTION	QTY.	DESIGN CHANGE	DATE	APPLY	REMARK
F22-1	279123300000	水箱总成	water tank assy	1				
F22-2	279105050000	温度传感器	sensor temperature	1				
F22-3	279181170000	水箱盖	water tank cap	1				
F22-4	270081170000	箍	hoop	4				
F22-5	279133300000	水箱	water tank	1				
F22-6	B04000600055	螺母M6	nut M6	1				
F22-7	270011170000	衬套	bush	2				
F22-8	270051170000	水箱永久密封垫	permanent seat,water tank	1				
F22-9	B07020000605	垫圈6	washer 6	1				

F23 随车工具 TOOL KIT ASSY.

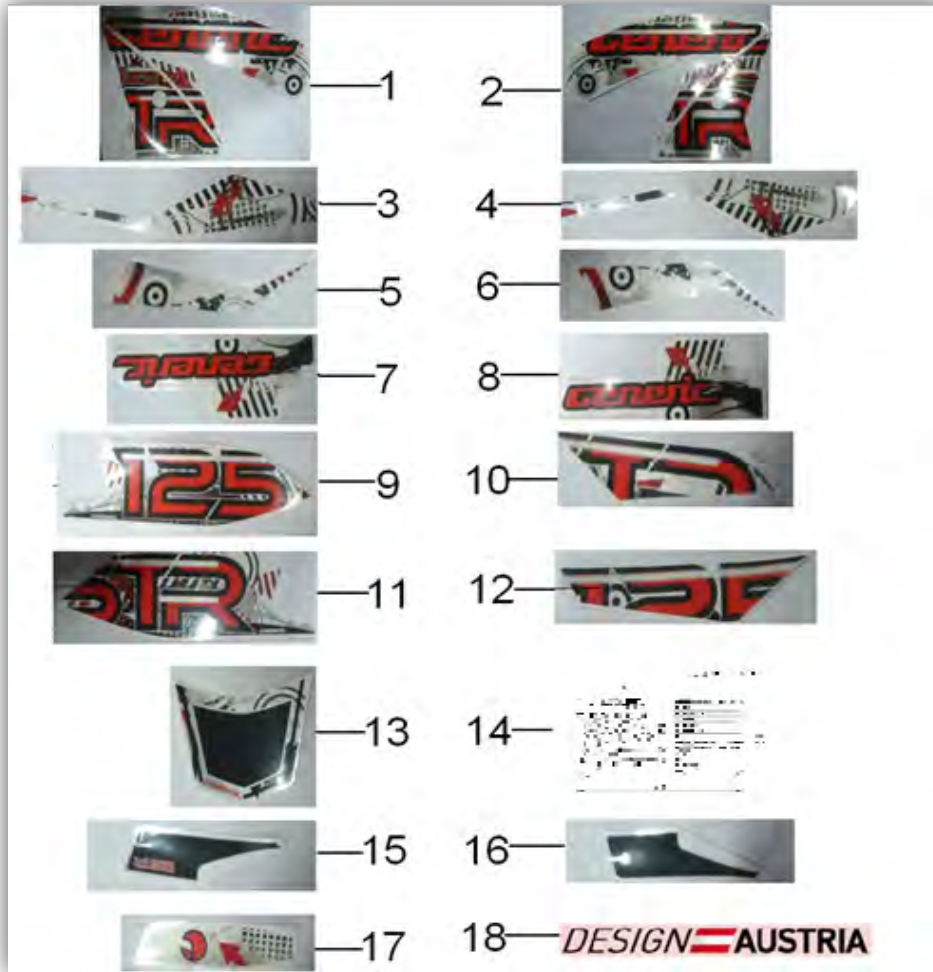
QJ125GY-16A



NO.	Part No.	CN DESCRIPTION	EN DESCRIPTION	QTY.	DESIGN CHANGE	DATE	APPLY	REMARK
F23-1	02110J000000	工具包	tool bag	1				
F23-2	02102J000000	火花塞套筒	socket,spark plug	1				
F23-3	02106J000000	手柄,螺丝刀	handle,screw driver	1				
F23-4	02103J000000	螺丝刀	driver,screw	1				
F23-5	B2002080003	M8/8mm 扳手	wrench	1				
F23-6	B2002060003	M6/6mm 扳手	wrench	1				
F23-7	B2002050003	M5/5mm 扳手	wrench	1				
F23-8	02100J690000	工具包	tool kit	1				
F23-9	02120J690000	工具包带	band assy.,tool kit	1				

F24 贴花 LIGHT ASSY.

QJ125GY-16A



NO.	Part No.	CN DESCRIPTION	EN DESCRIPTION	QTY.	DESIGN CHANGE	DATE	APPLY	REMARK
F24-1	05511J690000	贴花,油箱护板,左	sticker,guard board,fuel tank,l.	1				
F24-2	05512J690000	贴花,油箱护板,右	sticker,guard board,fuel tank,r.	1				
F24-3	05501J690000	贴花,前挡泥板,左	sticker,front fender l,l	1				
F24-4	05502J690000	贴花,前挡泥板,右	sticker,front fender r,l	1				
F24-5	05503J690000	贴花,前挡泥板,左	sticker,front fender l,II	1				
F24-6	05504J690000	贴花,前挡泥板,右	sticker,front fender r,II	1				
F24-7	05517J690000	贴花,左前挡泥板,前减震器	sticker,left guard plate,front shock absorber	1				
F24-8	05518J690000	贴花,右前挡泥板,前减震器	sticker,right guard plate,front shock absorber	1				
F24-9	05513J690000	贴花,左前挡泥板	sticker,left guard plate l	1				

